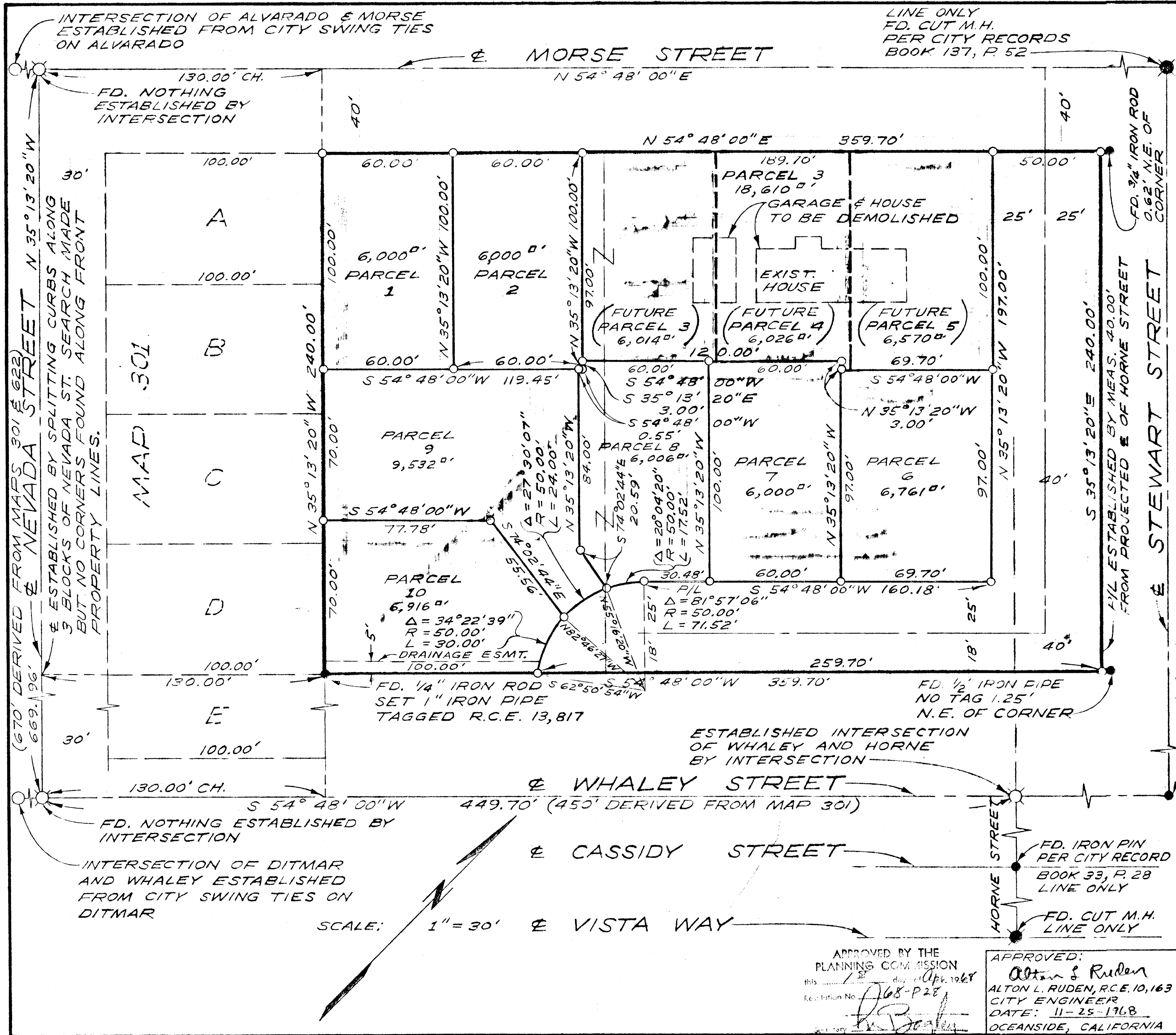


# LOT SPLIT MAP No. 453



**LEGAL DESCRIPTION:**  
 PORTION OF TRACT 42 OF  
 SOUTH OCEANSIDE MAP 622, CITY  
 OF OCEANSIDE, COUNTY OF  
 SAN DIEGO, STATE OF CALIFORNIA

**LEGEND:**

- FD. AS SHOWN
- SET 1" O.D. PIPE TAGGED R.C.E. 13,817
- ⊗ FD. CUT M.H.
- ⊗ MARKED M.H. WITH 4 CHISEL CUTS

**BASIS OF BEARINGS:**  
 ASSUMED BEARING OF  
 N 54° 48' 00" E FOR MORSE  
 STREET AS SAID BEARING HAS  
 BEEN USED ON THIS STREET  
 BY OTHERS

LINE ONLY  
 FD. CONC. MONUMENT  
 PER CITY RECORDS  
 BOOK 33, P. 29

LINE ONLY  
 FD. 1/2" IRON PIPE  
 NO TAG 1.25'  
 N.E. OF CORNER

LINE ONLY  
 FD. IRON PIN  
 PER CITY RECORD  
 BOOK 33, P. 28

LINE ONLY  
 FD. CUT M.H.

<b>LOT SPLIT MAP</b>		
FOR <b>WILLIAM C. WATKINS, INV.</b>		
OCEANSIDE, CALIFORNIA		
DRAWN: HP	E. BRIAN SMITH ENGINEERS 528 SOUTH HILL STREET OCEANSIDE, CALIFORNIA	DATE: 10-8-68
CHECKED: H.L.T.	<i>E. Brian Smith</i>	SCALE: 1" = 30'
APPROVED: E.B.S.	E. BRIAN SMITH, R.C.E. 13,817	SHEET: 1 OF 1

APPROVED BY THE  
 PLANNING COMMISSION  
 this 15 day of Apr. 1968  
 Resolution No. 168-P2E  
*[Signature]*

APPROVED:  
*Alton L. Ruden*  
 ALTON L. RUDEN, R.C.E. 10,163  
 CITY ENGINEER  
 DATE: 11-25-1968  
 OCEANSIDE, CALIFORNIA

