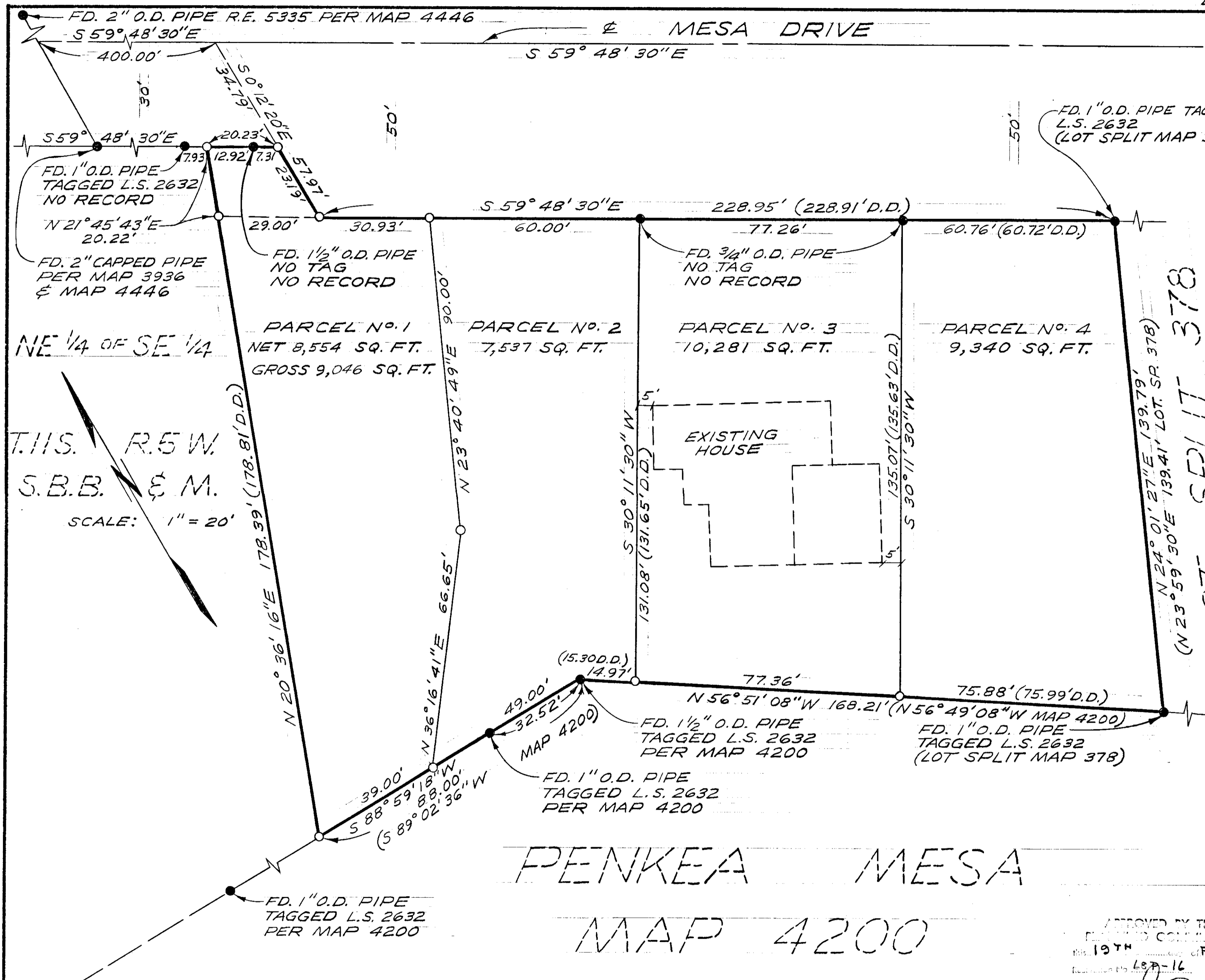


LOT SPLIT MAP No.-450



LEGAL DESCRIPTION:  
 A PORTION OF NE 1/4 SE 1/4 SECTION 24, T.11S., R.5W., S.B.B. & M. CITY OF OCEANSIDE, COUNTY OF SAN DIEGO, STATE OF CALIFORNIA

LEGEND:  
 ● FOUND AS SHOWN  
 ○ SET 1" O.D. PIPE TAGGED R.C.E. 13,817

BASIS OF BEARINGS:  
 THE SOUTHERLY RIGHT OF WAY LINE OF MESA DRIVE PER DEED I.E. SOUTH 59° 48' 30" E

T.11S. R.5W. S.B.B. & M. SCALE: 1" = 20'

PENKEA MESA MAP 4200 R OF S 4888

APPROVED BY THE PUBLIC UTILITY COMMISSION this 19TH day of Feb 1968  
 Secretary *Am Bayley*

APPROVED: *Alton Ruden*  
 ALTON L. RUDEN, R.C.E. 10,163 CITY ENGINEER  
 DATE: May 24, 1968  
 OCEANSIDE, CALIFORNIA

| LOT SPLIT MAP          |  |                 |
|------------------------|--|-----------------|
| FOR WILLIAM WATKINS    |  |                 |
| OCEANSIDE, CALIFORNIA  |  |                 |
| DRAWN: <i>HP</i>       | E. BRIAN SMITH ENGINEERS<br>528 SOUTH HILL STREET<br>OCEANSIDE, CALIFORNIA | DATE: 1/30/68   |
| CHECKED: <i>H.L.T.</i> | <i>E. Brian Smith</i>  | SCALE: 1" = 20' |
| APPROVED: <i>EBS</i>   |  | SHEET: 1 OF 1   |