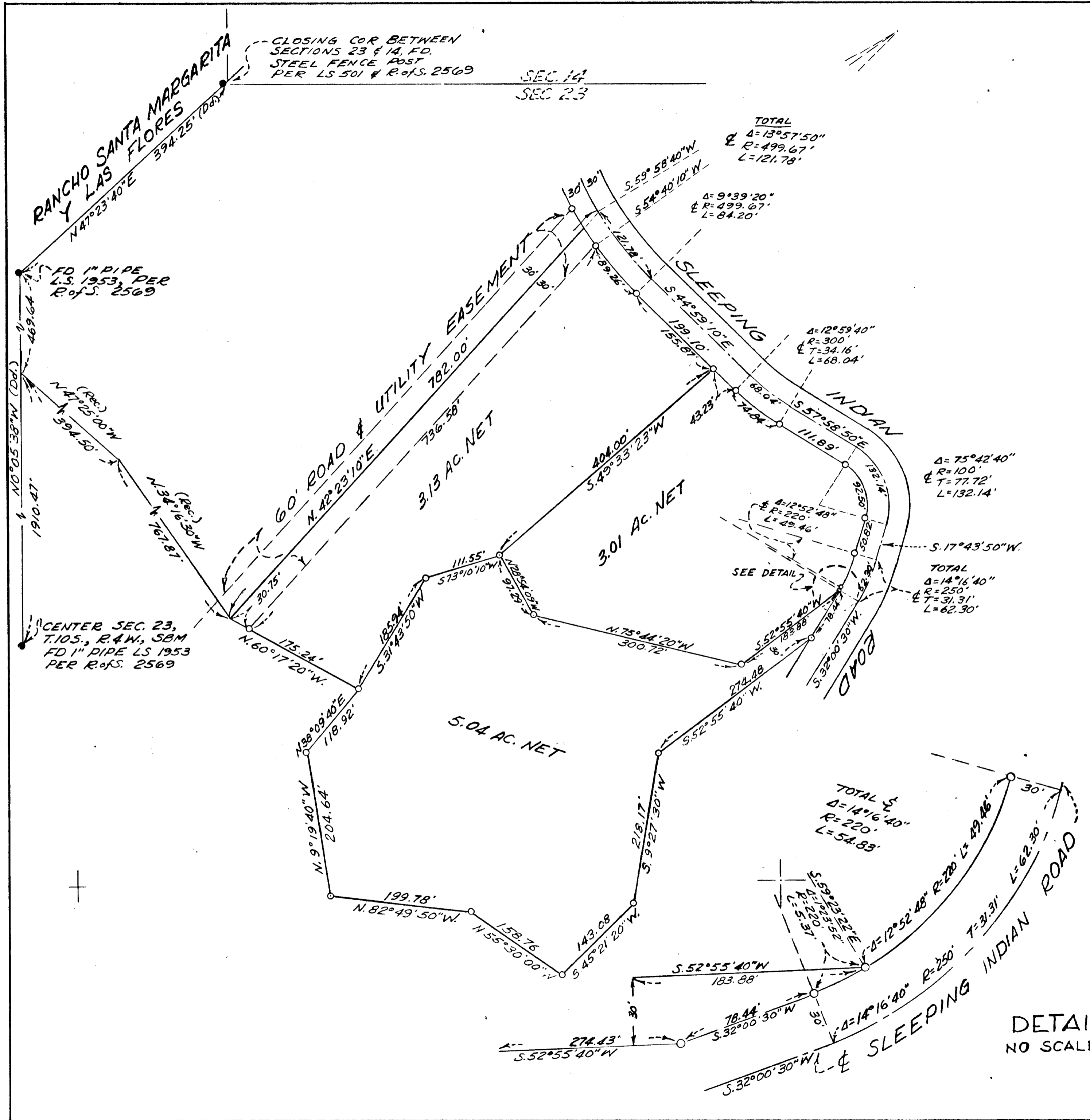
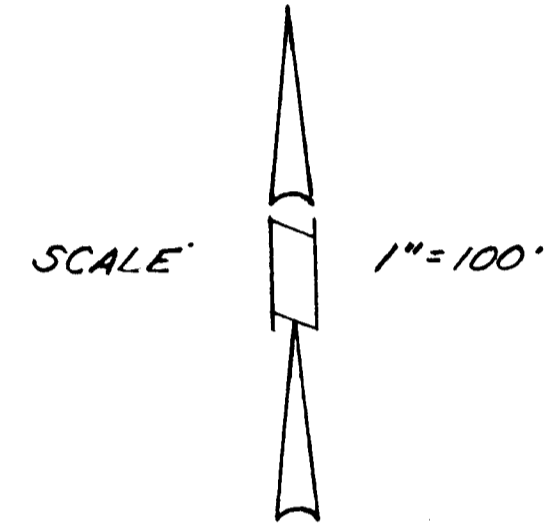


LOT SPLIT MAP NO 449



THIS MAP CORRECTLY REPRESENTS A SURVEY MADE BY ME OR UNDER MY DIRECTION IN CONFORMANCE WITH THE REQUIREMENTS OF THE LAND SURVEYORS ACT AT THE REQUEST OF E. W. ANDERSON IN JULY 1967

William Karn
WILLIAM KARN, L.S. 2961



LEGEND:
● INDICATES FOUND POINTS AS NOTED
○ INDICATES SET 1/2" X 18" IRON PIN WITH BRASS DISC STAMPED L.S. 2961

APPROVED BY THE PLANNING COMMISSION
this 5th day of SEPT. 1967
Resolution No. 67-P48
Secretary *Wm. Dargatzis*

APPROVED
Date: Jan 23, 1968
By: *Alton S. Riden*
City Engineer

LOT SPLIT MAP
CITY OF OCEANSIDE
A DIVISION OF A PORTION OF THE NE 1/4 OF FRAC. SEC. 23, T.10S., R.4W., S.B.M. SAN DIEGO COUNTY, CALIF.
OWNER: E. W. ANDERSON
1121 PARK STREET
HUNTINGTON BEACH, CALIFORNIA, 92646