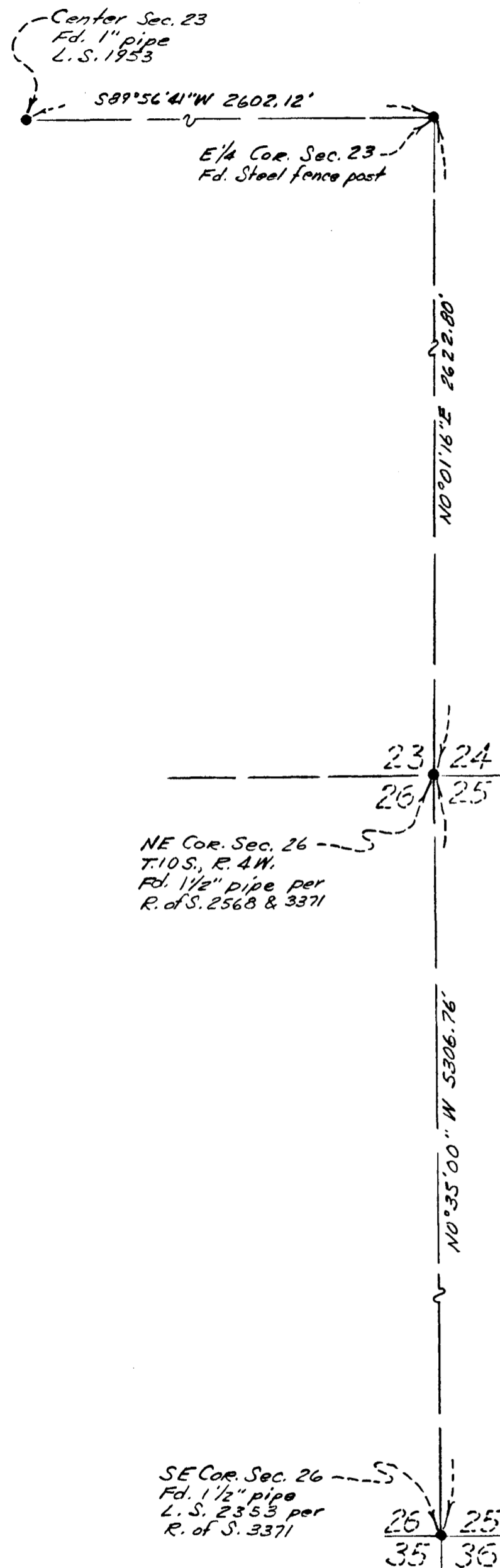
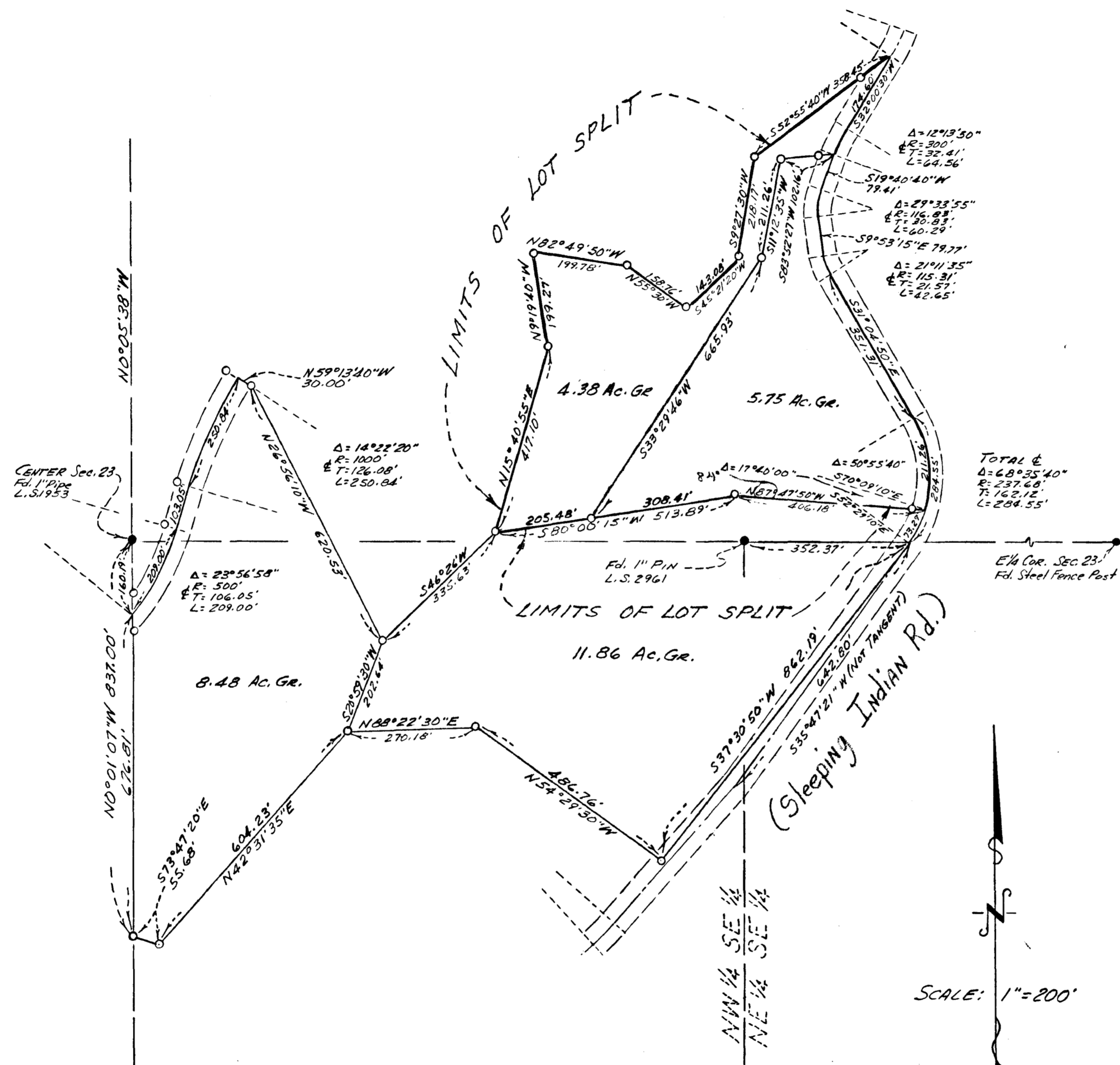


LOT SPLIT MAP N^o 448



DETAIL FOR BASIS OF BEARINGS
NO SCALE



This map correctly represents a survey made by me or under my direction in conformance with the requirements of the Land Surveyors Act at the request of FIRST FALLBROOK COMPANY, INC., in MAY 1966.

William Kern
L. S. 2961



LEGEND:

- Indicates found corner as noted.
- Indicates set 1/2" x 18" iron pin stamped L.S. 2961.

The basis of bearings for this survey is the East line of Section 26, T.10S, R.4W, S.B.M., per R. of S. Map No. 3371, i.e., North 0° 35' West (See Detail)

APPROVED BY THE PLANNING COMMISSION
this 3rd day of Jan. 1968
Resolution No. 67-P1

Secretary *Lawrence C. Bailey*

APPROVED
Date Jan 5, 1968
By *Alton J. Fuler*
City Engineer

LOT SPLIT MAP	
CITY OF OCEANSIDE	
A DIVISION OF A PORTION OF W 1/2 E 1/2 OF SECTION 23, T.10S, R.4W, S.B.M. SAN DIEGO COUNTY, CALIFORNIA	
OWNER:	First Fallbrook Company, Inc. 1102 South Main Fallbrook, California.