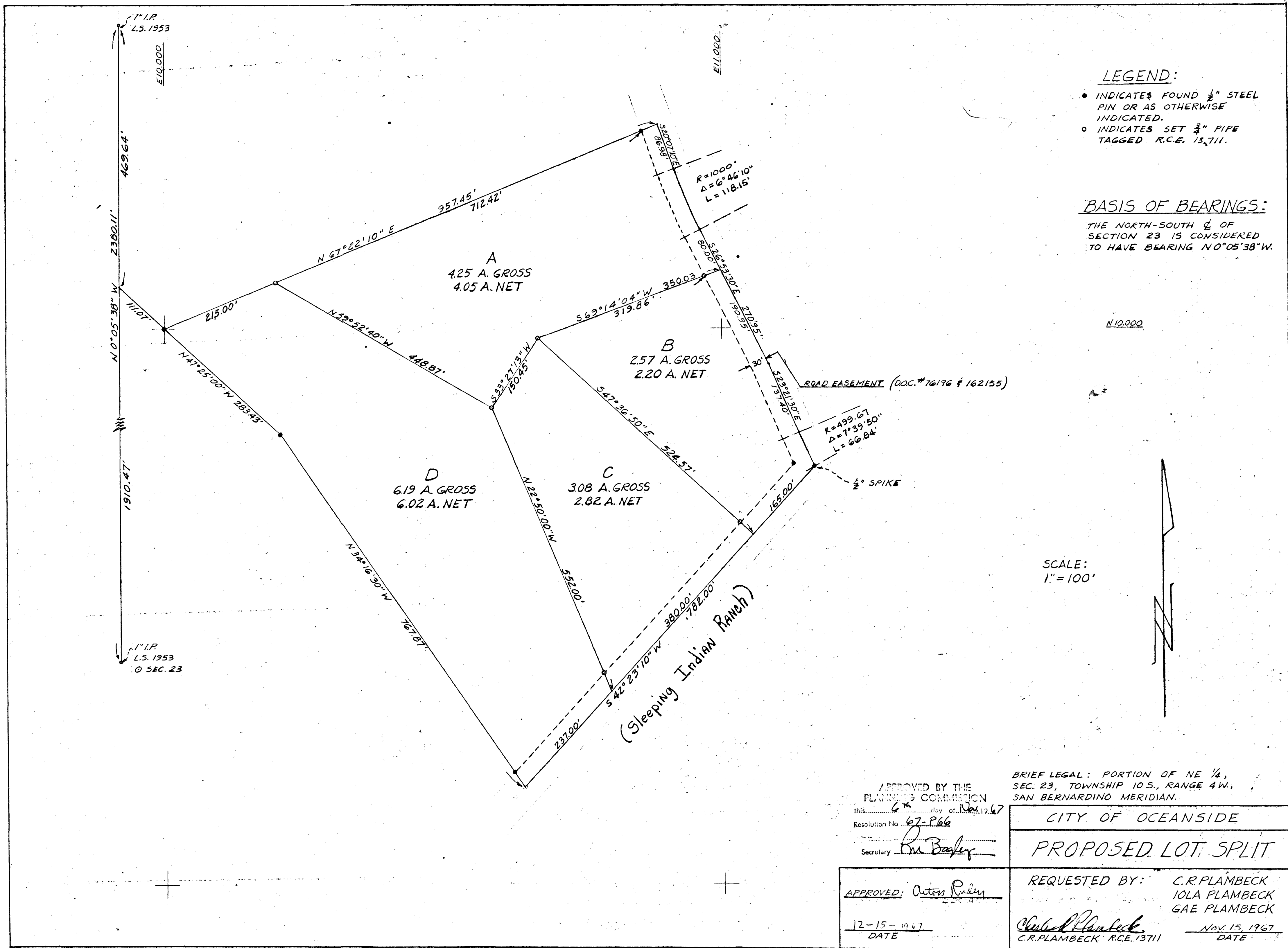


# LOT SPLIT MAP 447



- LEGEND:**
- INDICATES FOUND 1/2" STEEL PIN OR AS OTHERWISE INDICATED.
  - INDICATES SET 3/4" PIPE TAGGED R.C.E. 13,711.

**BASIS OF BEARINGS:**  
 THE NORTH-SOUTH C<sub>L</sub> OF SECTION 23 IS CONSIDERED TO HAVE BEARING N0°05'38"W.

N10,000

SCALE:  
 1" = 100'



APPROVED BY THE PLANNING COMMISSION  
 this 6<sup>th</sup> day of Nov 1967  
 Resolution No. 67-P66  
 Secretary *Rm Bayley*

BRIEF LEGAL: PORTION OF NE 1/4, SEC. 23, TOWNSHIP 10 S., RANGE 4 W., SAN BERNARDINO MERIDIAN.

CITY OF OCEANSIDE  
**PROPOSED LOT SPLIT**

APPROVED: *Anton Rulien*  
 DATE 12-15-1967

REQUESTED BY: C.R. PLAMBECK  
 IOLA PLAMBECK  
 GAE PLAMBECK  
*Charles Plambeck*  
 C.R. PLAMBECK R.C.E. 13711  
 DATE Nov. 15, 1967