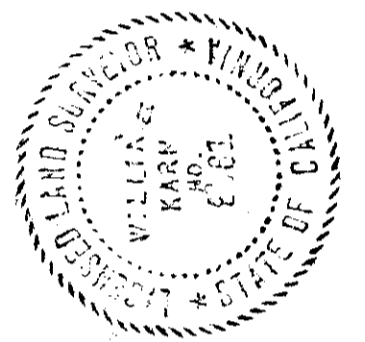


# LOT SPLIT MAP N<sup>o</sup> 445

This map correctly represents a survey made by me or under my direction in conformance with the requirements of the Land Surveyors Act at the request of VINCE CILURZO in December 1966.

*William Kain*  
L. S. 2961

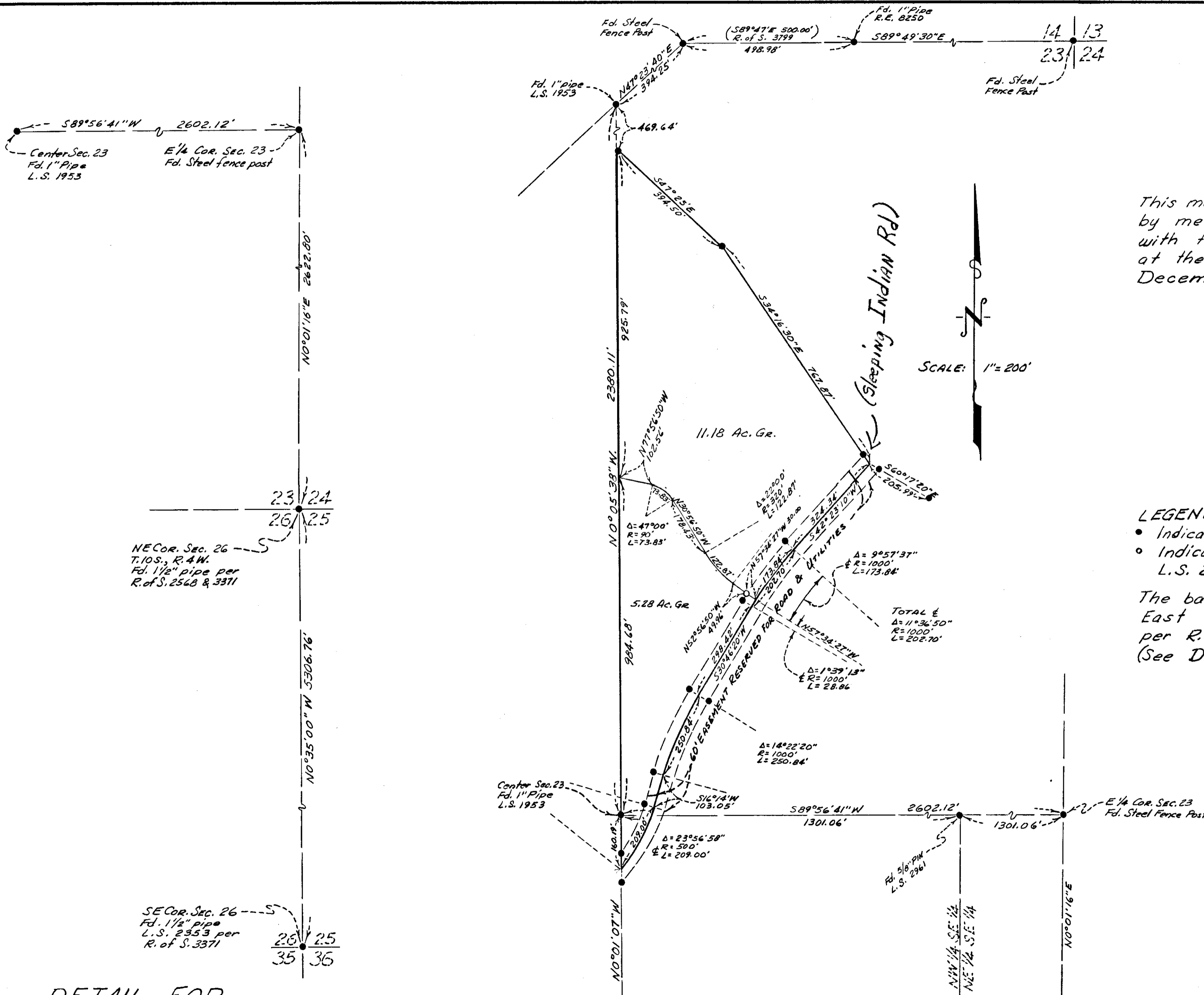


SCALE: 1" = 200'

**LEGEND:**

- Indicates found corner as noted.
- Indicates set 1/2" x 18" iron pin stamped L.S. 2961.

The basis of bearings for this survey is the East line of Section 26, T.10S., R.4W., S.B.M., per R. of S. Map No. 3371, i.e., North 0°35' West. (See Detail)



NE Cor. Sec. 26  
T.10S., R.4W.  
Fd. 1 1/2" pipe per  
R. of S. 2568 & 3371

SE Cor. Sec. 26  
Fd. 1 1/2" pipe  
L.S. 2953 per  
R. of S. 3371

DETAIL FOR  
BASIS OF BEARINGS  
NO SCALE

APPROVED BY THE  
PLANNING COMMISSION  
This 6<sup>th</sup> day of Nov. 1967  
Res. Callen No. 67-P67  
Secretary *Am. Badley*

APPROVED  
Date Nov 15, 1967  
By *Alton Ruder*  
City Engineer

<b>LOT SPLIT MAP</b>	
<b>CITY OF OCEANSIDE</b>	
A DIVISION OF A PORTION OF W 1/2 E 1/2 OF SECTION 23, T.10S., R.4W., S.B.M., SAN DIEGO COUNTY, CALIFORNIA	
<b>OWNER:</b>	VINCE CILURZO 4527 GAINSBOROUGH HOLLYWOOD, CALIFORNIA