

RECORD OF SURVEY

OF A PORTION OF THE SW 1/4 OF SECTION 25 T11S, R5W, S.B.B. & M. IN TRACT 101, SOUTH OCEANSIDE, MAP No. 622, CITY OF OCEANSIDE, COUNTY OF SAN DIEGO, CALIFORNIA

LEGEND

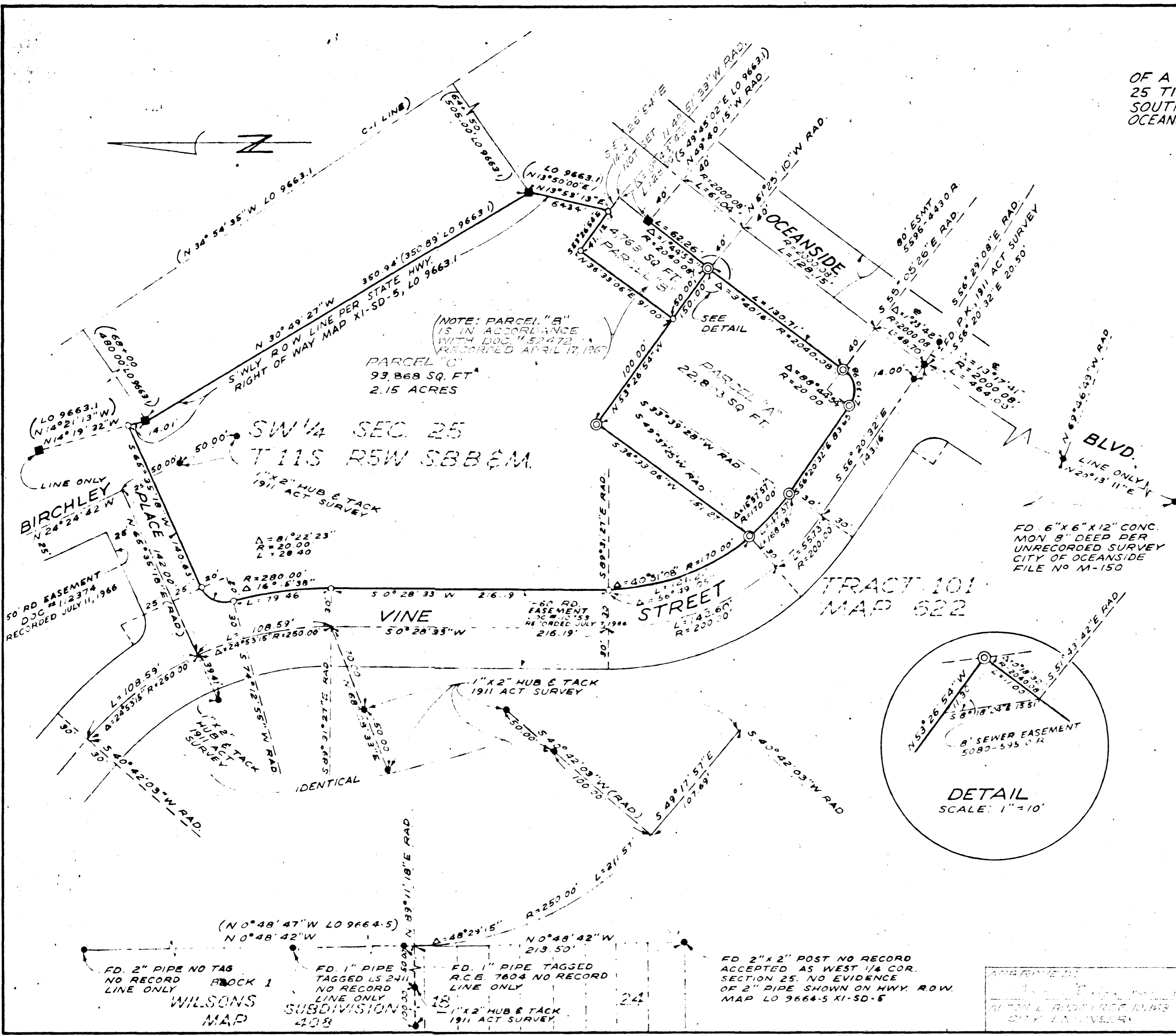
- ⊙ INDICATES SET 2" IRON PIPE 24" LONG WITH CONCRETE PLUG AND COPPER DISC STAMPED R.C.E. 13,817
- INDICATES SET 1" IRON PIPE 24" LONG WITH CONCRETE PLUG AND COPPER DISC STAMPED R.C.E. 13,817
- INDICATES FOUND 1" IRON PIPE TAGGED STATE DIVISION OF HIGHWAYS PER RIGHT OF WAY MAP, XI-SD-5, LO 9663.1
- INDICATES FOUND AS SHOWN

SCALE: 1" = 50'

THE BASIS OF BEARINGS FOR THIS SURVEY IS THE S'WLY RIGHT OF WAY LINE ON XI-SD-5 SHOWN AS N 30° 49' 27" W ON RIGHT OF WAY MAP, XI-SD-5, LO 9663.1 FILED IN THE DISTRICT OFFICE, DISTRICT XI, STATE OF CALIFORNIA, DIVISION OF HIGHWAYS, SAN DIEGO, CALIFORNIA. SAID BEARING AND THE BEARING SHOWN HEREON ARE IN TERMS OF THE CALIFORNIA COORDINATE SYSTEM, ZONE 6

NOTE:

TIES, SHOWN AS 1911 ACT SURVEY, WERE SET BY DRESSELHAUS ENGINEERS FOR COUNTRY CLUB LANE 1911 ACT IMPROVEMENT DISTRICT, WHICH WORK IS PRESENTLY UNDER CONSTRUCTION AND WERE USED FOR REESTABLISHMENT OF RIGHT OF WAY LINE ON VINE STREET AND BIRCHLEY PLACE.



ARTHUR L. SACHS, INC.
 REGISTERED CIVIL ENGINEER 13,817
 DECEMBER 1966

ENGINEERS CERTIFICATE
 THIS MAP HAS BEEN EXAMINED FOR CONFORMANCE WITH THE RECORDING ACTS THIS 20 DAY OF MARCH 1967

ENGINEER
 E. BRIAN SMITH

37942
 2:38
 6847
 5.00

A. S. GRAY
 370-1659