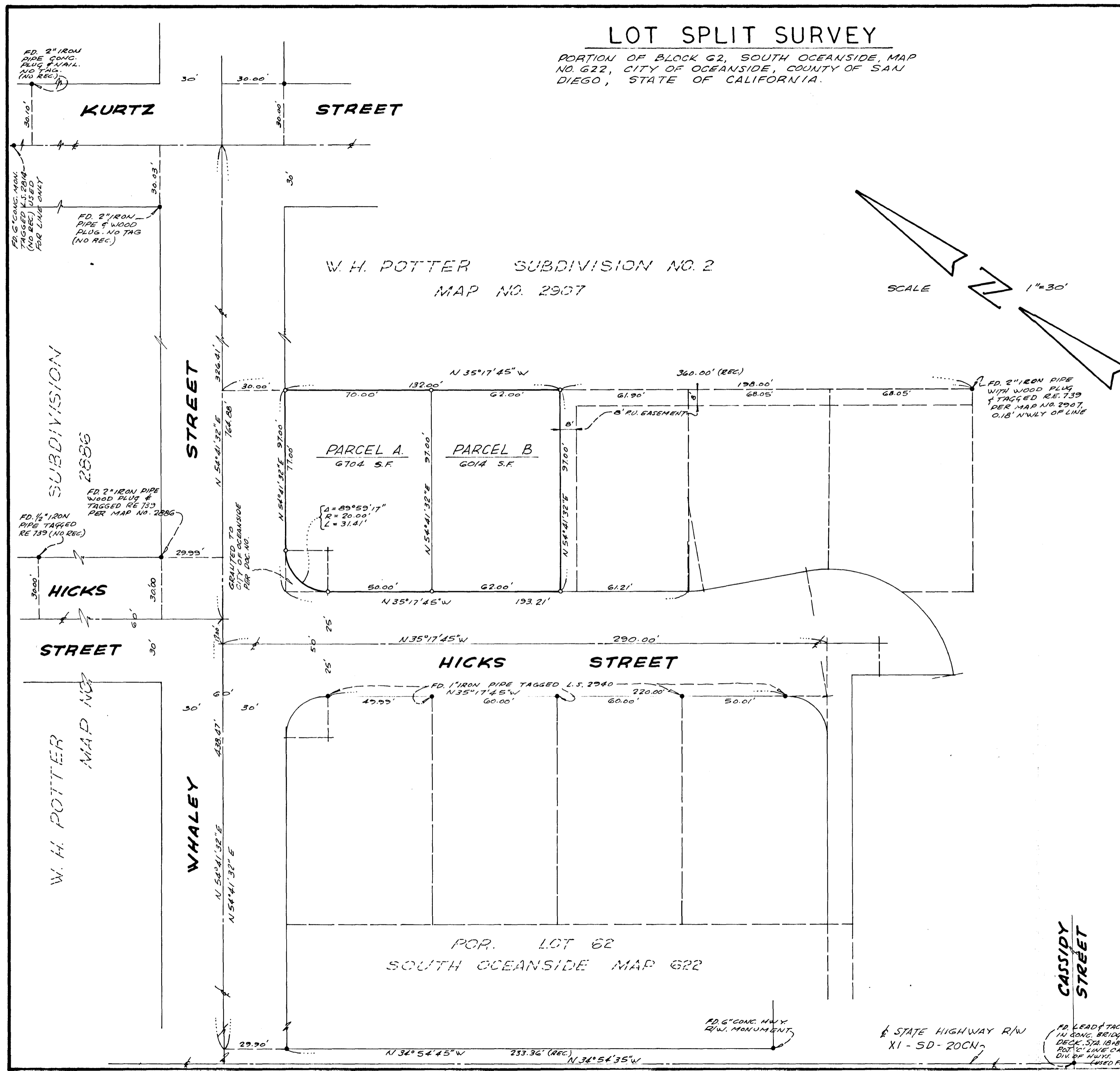


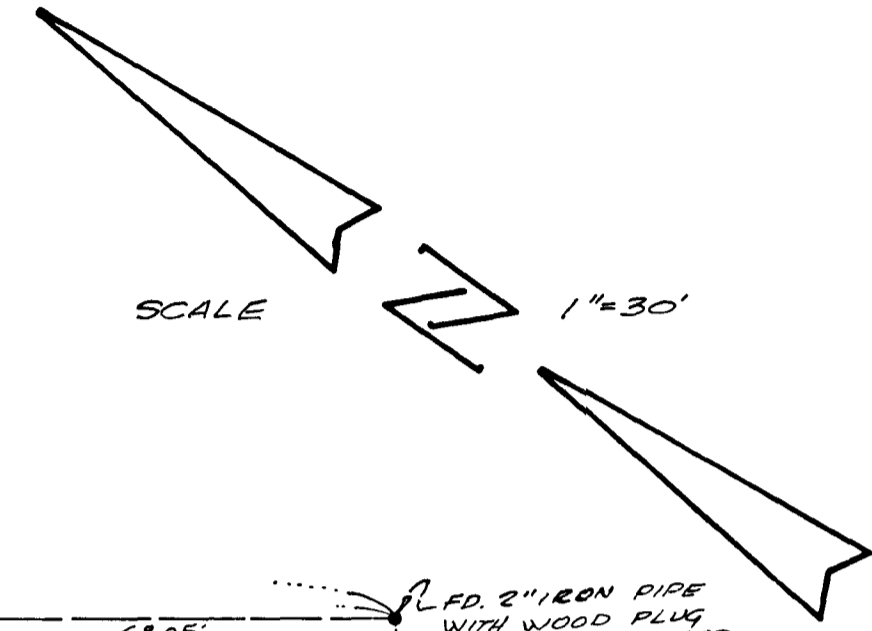
# LOT SPLIT SURVEY

PORTION OF BLOCK G2, SOUTH OCEANSIDE, MAP NO. G22, CITY OF OCEANSIDE, COUNTY OF SAN DIEGO, STATE OF CALIFORNIA.



### LEGEND:

- — INDICATES, FOUND MONUMENTS AS NOTED.
- — INDICATES, SET 1" IRON PIPE, CONCRETE CORE, CENTERED WITH COPPER DISC STAMPED L.S. 2940



### NOTE:

This map correctly represents a survey made by me in conformance with the requirements of Chapter 15, Div. 3, of the Business and Professions Code, at the request of HOWARD BAUMGARTNER in FEB. 1967. Also, corner monuments as indicated will be set within 30 days from approval of this map by the City of Oceanside.

*Donald H. Holly*  
DONALD H. HOLLY L.S. 2940

I, A. L. RUDEN City Engineer of the City of Oceanside, California, hereby state that I have examined this map and found that it appears to meet said City's requirements as to accuracy of mathematical data and that it does not appear to be in conflict with Section 11535 of the Subdivision Map Act.

*A. L. Ruden*  
A. L. RUDEN R.C.E. 10,183

### BASIS OF BEARINGS:

THE CENTERLINE OF THE CALIFORNIA STATE HIGHWAY, XI-SD-20CN, SHOWN AS N 34° 54' 35" W ON THE RIGHT OF WAY MAP WAS USED AS THE BASIS OF BEARINGS FOR THIS MAP

## LOT SPLIT MAP

PREPARED FOR: CALCO, A JOINT VENTURE  
P.O. BOX 277  
CARLSBAD, CALIFORNIA

DRAWN BY: O.A.S.	APPROVED <i>A.L. Ruden</i> A.L. RUDEN	CITY ENGINEER R.C.E. 10,183	DATE: FEB. 13, 1967
CHK'D BY:	PREPARED BY: <b>DONALD H. HOLLY</b> LICENSED SURVEYOR P. O. Box 614 CARLSBAD, CALIFORNIA		SCALE 1" = 30' SHEET 1 OF 1

CASSIDY STREET

STATE HIGHWAY R/W XI-SD-20CN

FD. 6" CONG. HWY R/W MONUMENT, DECK, STA. 18+72.20, ROUTE LINE CALVE DIV. OF HIGHW. (USED FOR LINE)