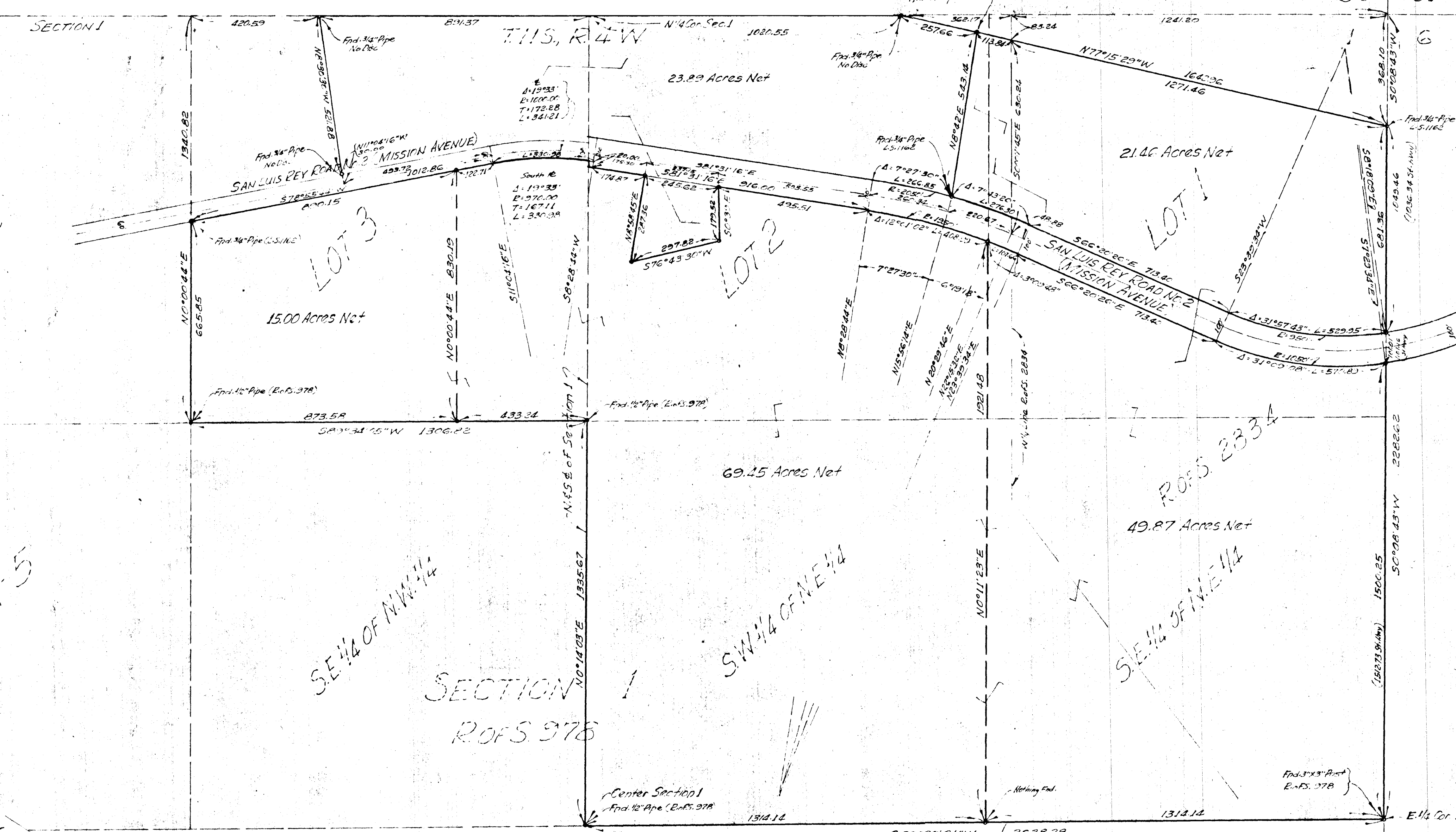


LOT SPLIT MAP NO 425

36 31



The basis of Bearings for this survey is the West Line of the N.E. 1/4 of Section 1, T.11S, R.4W, S.B. & M. as shown on Record of Survey Map 278, V.3, No. 403'E

~ LEGEND ~
 o Indicates points found as noted Approx. July 6-63 to date

LOT SPLIT MAP

Showing calculated net acreages on a portion of the Camphuyzen Ranch being a portion of Section 1, T.11S, R.4W, S.B. & M. City of Oceanside - San Diego County California Scale - 1" = 200'

This map correctly represents a survey made by me or under my direction at the request of Tony Camphuyzen between July 1963 & Jan. 1967

Allen L. Ruden
 N.P. Browne, Browne & Vogt Engineering, Surveyors Inc.

Approved *Allen L. Ruden*
 Allen L. Ruden - R.C.E. 10163 - City Engineer