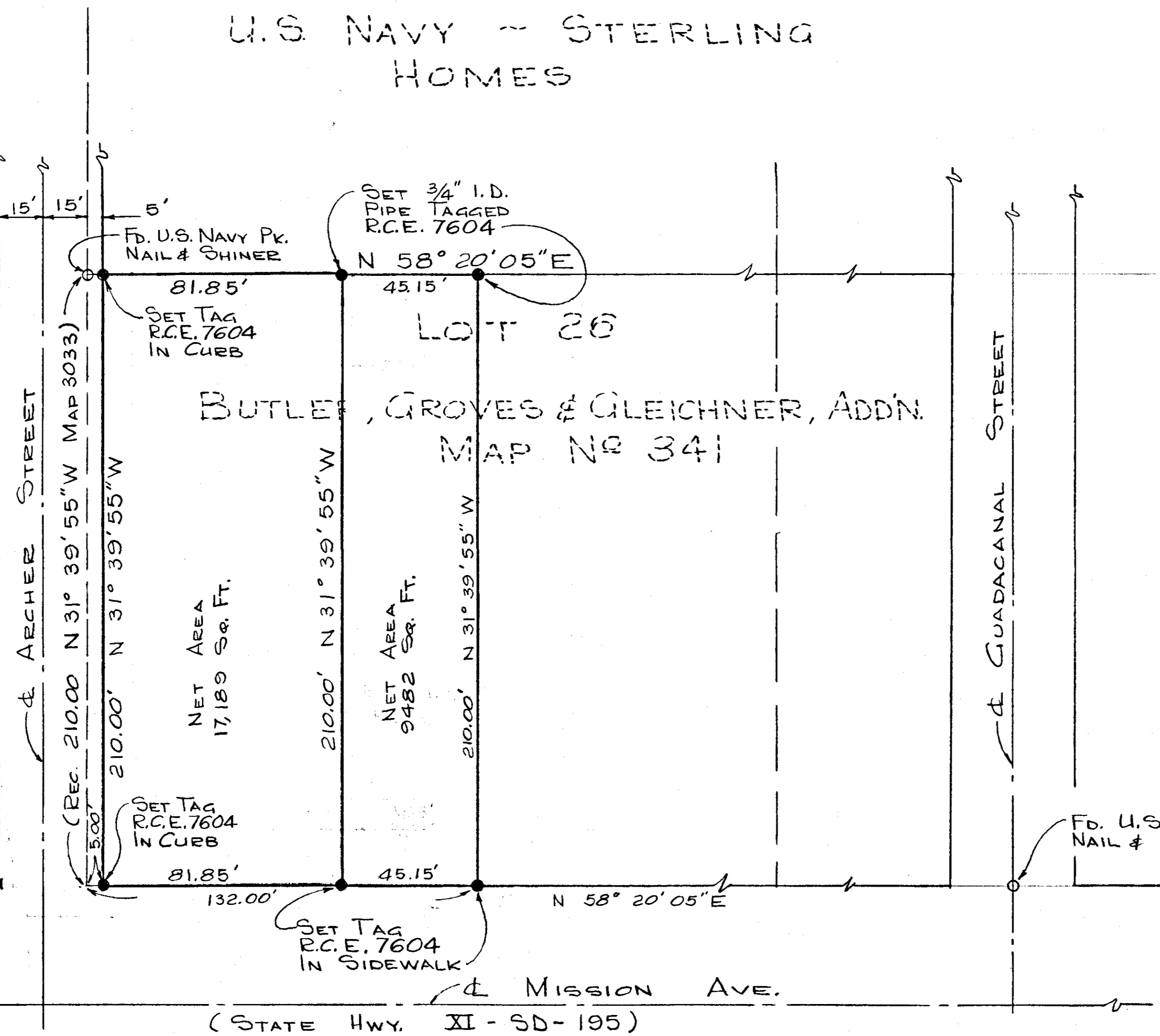


U.S. NAVY - STERLING HOMES

SINCLAIR'S MAP 240
 SCALE: 1" = 30'

KELLOGG & ADDITION



LEGAL DESCRIPTION:
 PORTION OF LOT 26, BUTLER, GROVES & GLEICHNER ADDITION, TO OCEANSIDE, MAP No. 341.

BASIS OF BEARING:
 CENTER LINE OF MISSION AVE. PER PLANS FOR STATE HWY. ROUTE XI-SD-195-OCN. & MAP No. 3033. i.e. N58° 20' 05" E.

- LEGEND
- FOUND U.S. NAVY PK, NAIL & SHINER AS NOTED
 - SET CORNER AS NOTED
 - RE-ESTABLISHED CORNER & SET HUB.

PROPERTY SURVEY FOR MR. EDWARD GOMEZ

APPROVED: <i>Alton L. Ruden</i> ALTON L. RUDEN, R.C.E. 10,163 CITY ENGINEER	DRAWN: EBS	DRESSELHAUS ENGINEERS 528 SOUTH HILL STREET OCEANSIDE, CALIFORNIA	DATE: 1-28-65
DATE: 1-20-1966 OCEANSIDE, CALIFORNIA	CHECKED: <i>266</i>	<i>E. Brian Smith</i> E. BRIAN SMITH R.C.E. 13,817	SCALE: 1" = 30'
	REVISED: 12-28-66		JOB: 2-2291