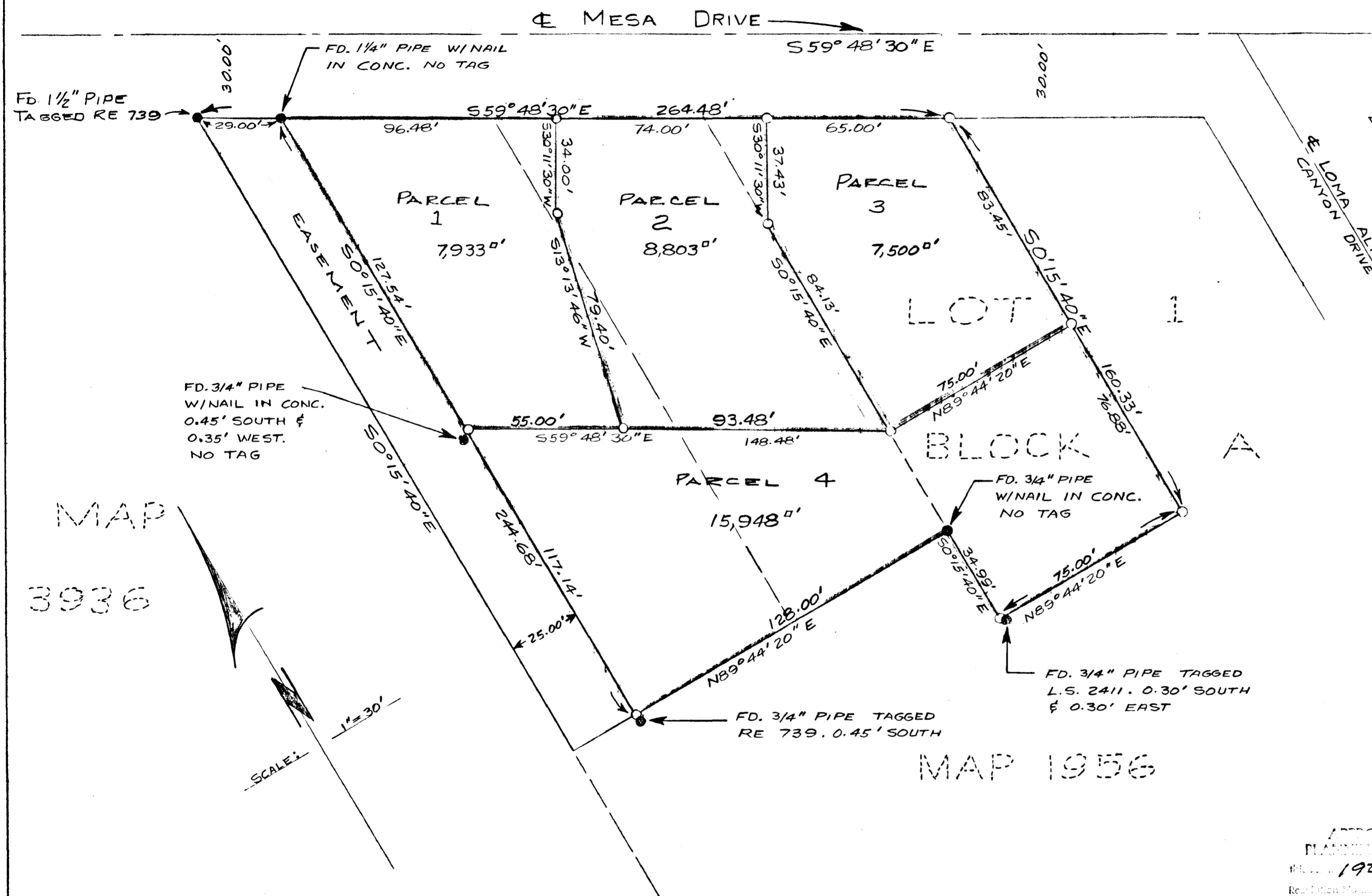


LOT SPLIT MAP NO. 423

LEGAL DESCRIPTION: A PORTION OF LOT 1 OF BLOCK A OF ELLERY'S LOMA ALTA ADDITION, MAP NO. 1956 IN THE CITY OF OCEANSIDE, COUNTY OF SAN DIEGO, CALIFORNIA

LEGEND: ● - INDICATES FOUND AS SHOWN
○ - INDICATES SET 1" PIPE TAGGED R.C.E. 7604

BASIS OF BEARINGS: THE WEST LINE OF LOT 1, BLOCK A, LOMA ALTA ADDITION, MAP NO. 1956; i.e. S0°15'40"E



MAP 3936
SCALE 1"=30'

MAP 1956

APPROVED BY THE PLANNING COMMISSION
1924
Resolution No. 66-P-61
Secretary *Rm Bradley*

LOT SPLIT MAP		
FOR HENRY B. BOWEN		
OCEANSIDE CALIFORNIA		
APPROVED: <i>Alton L. Ruden</i> ALTON L. RUDEN R.C.E. 10,163 CITY ENGINEER DATE 1-4-1967 OCEANSIDE, CALIFORNIA	DRAWN: S.B. CHECKED: H.L.T. APPROVED: EBS	DRESSELHAUS ENGINEERS 528 SOUTH HILL STREET OCEANSIDE, CALIFORNIA <i>E. Brian Smith</i> E. BRIAN SMITH RCE 13,817
		DATE: 12/20/66 SCALE: 1"=30' SHEET 1 OF 1