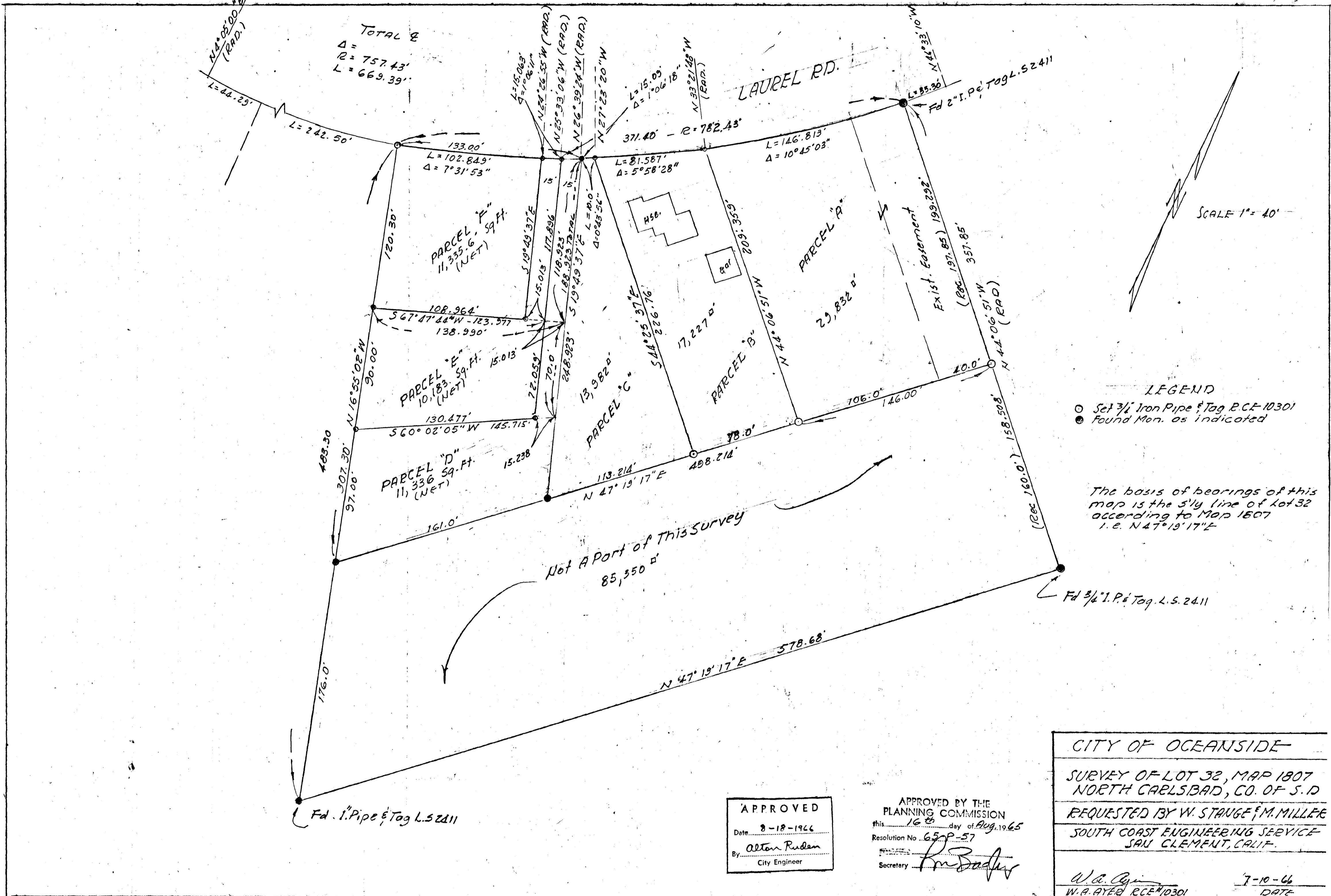


SPLIT LOT MAP #417



SCALE 1" = 40'

LEGEND
 ○ Set 3/4" Iron Pipe & Tag R.C.E. 10301
 ● Found Mon. as indicated

The basis of bearings of this map is the S'ly line of Lot 32 according to Map 1807 i.e. N 47° 19' 17" E

APPROVED
 Date: 8-18-1966
 By: Alton Ruden
 City Engineer

APPROVED BY THE
 PLANNING COMMISSION
 this 16th day of Aug. 1965
 Resolution No. 65P-57
 Secretary: *Rm. Badger*

CITY OF OCEANSIDE
 SURVEY OF LOT 32, MAP 1807
 NORTH CARLSBAD, CO. OF S.D.
 REQUESTED BY W. STAUGE & M. MILLEE
 SOUTH COAST ENGINEERING SERVICE
 SAN CLEMENT, CALIF.
W.A. Ayer
 W.A. AYER R.C.E. 10301
 7-10-66
 DATE