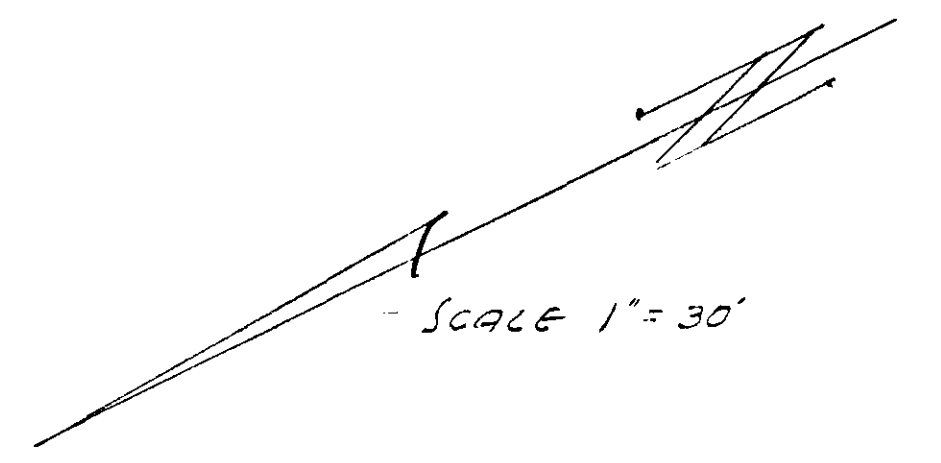
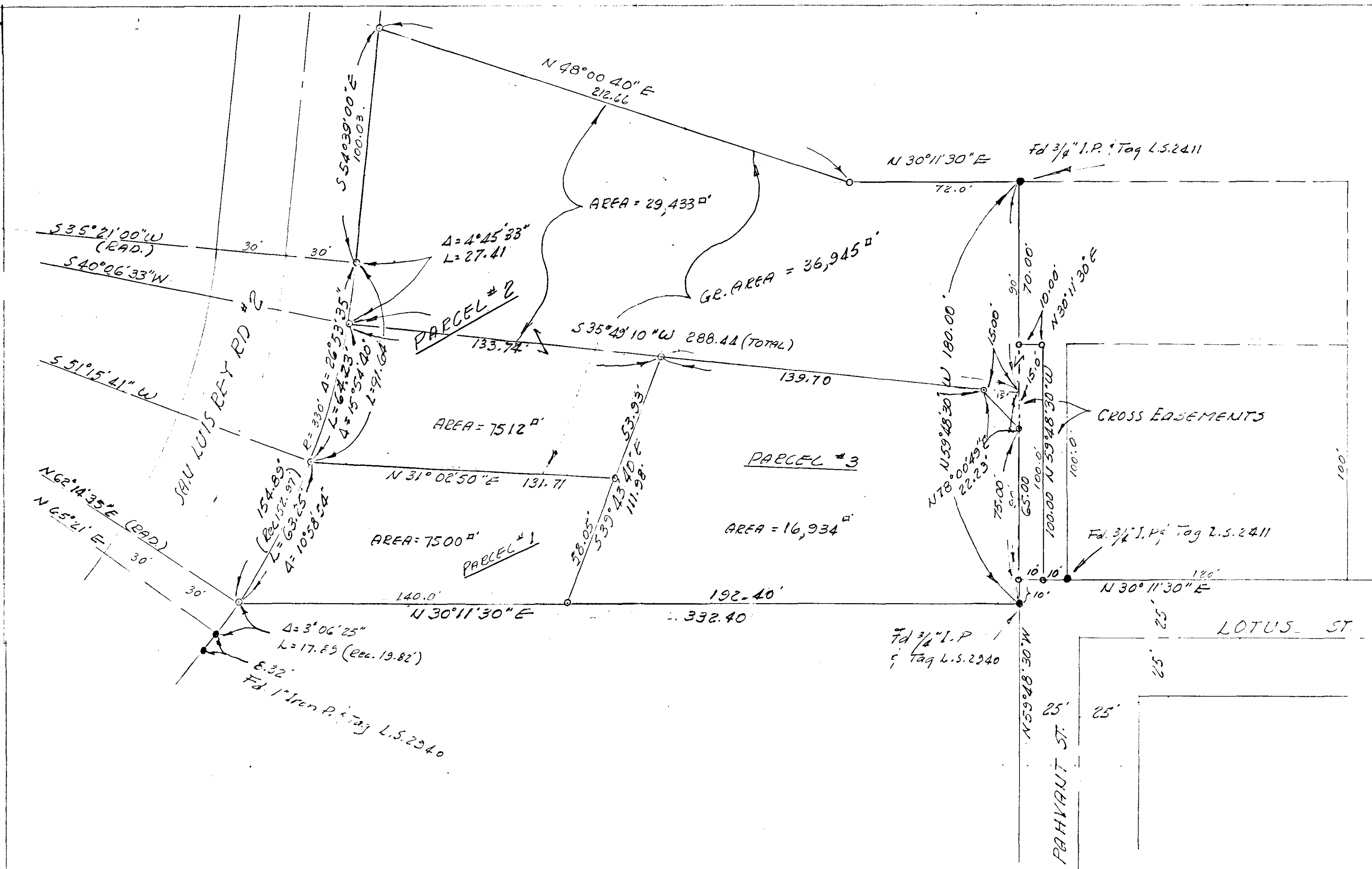


# SPLIT LOT MAP # 413



**LEGEND**  
 • Monuments Fd. as Indicated  
 ○ Set 3/4" Iron Pipe & Tag P.C.E. #10301

THE BASIS OF BEARINGS of this map is the N 1/4 line of Lot "6" i.e. S 54° 39' 00" E, Map #1834

APPROVED BY THE PLANNING COMMISSION  
 this 20<sup>th</sup> day of June, 1966  
 Resolution No. 60-P-37  
 Secretary *Ken Baefer*

APPROVED  
 Date 8-18-1966  
 By *Alton Ruden*  
 City Engineer

OCEANSIDE CALIFORNIA  
 SURVEY OF A PORTION OF LOT 6, ELLERY'S ADD UNIT #1  
 MAP NO 1834  
 REQUESTED BY H. FRENCH  
 SURVEYED BY SO. COAST ENG. SERVICE  
*Eugene H. Allen* 8-10-  
 E. Jayer W.C.F. 10035 DATE