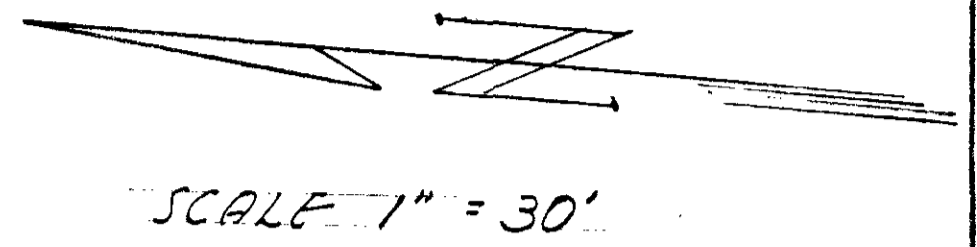
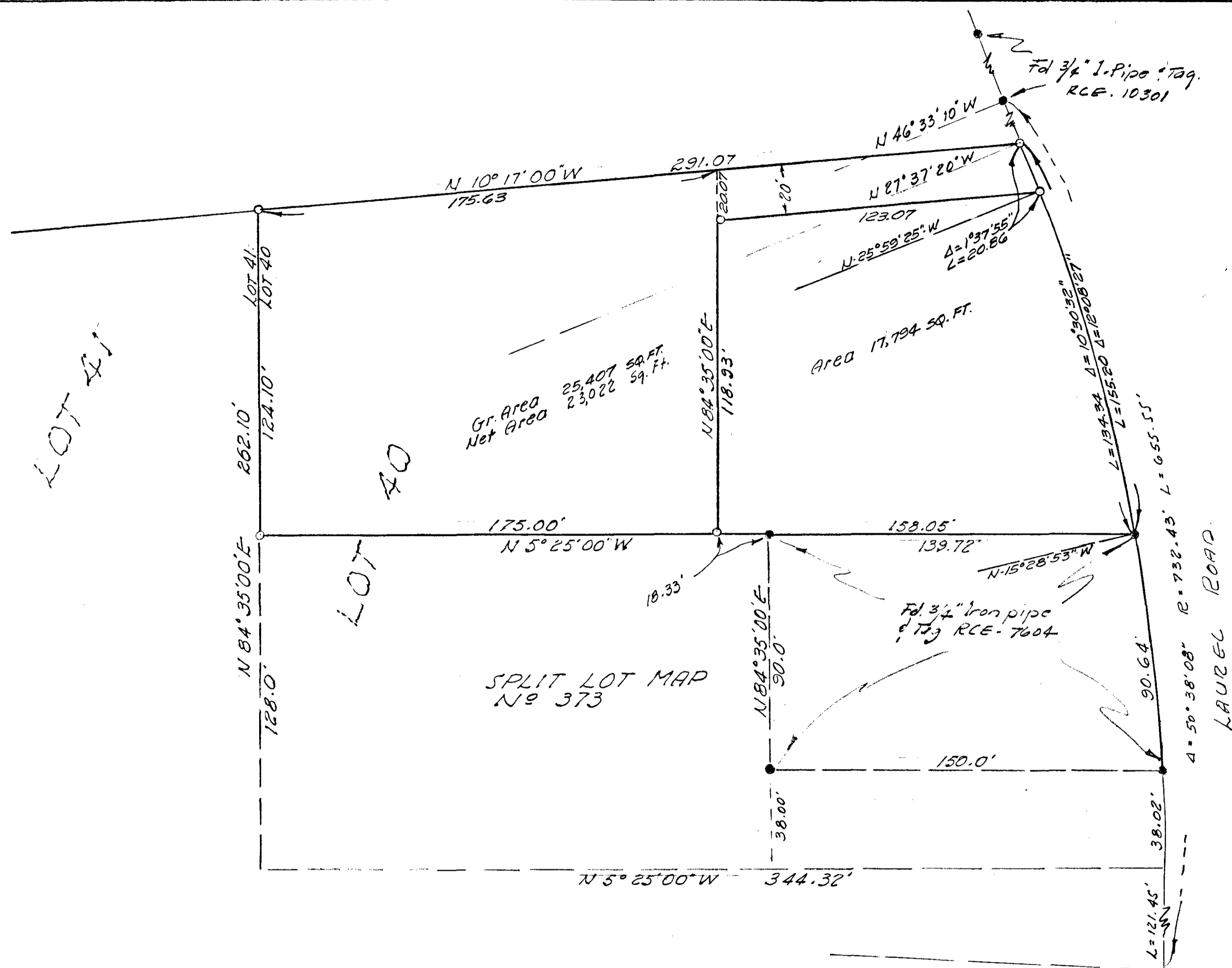


SPLIT MAP N^o 408



○ Set 1" Iron Pipe & Tag R.C.E. 10301
 ● Mon. Fd. as indicated

BASIS OF BEARINGS :-
 The Westerly line of Lot 40
 according to Map of
 North Carlsbad #1807

SPLIT LOT MAP
 N^o 373

LAUREL ROAD

REQUESTED BY FRED HAMPE

CITY OF OCEANSIDE CALIF.

A SURVEY OF A PORTION
 OF LOT N^o 40, NORTH
 CARLSBAD MAP N^o 1807

SOUTH COAST ENGINEERING SERVICE

SAN CLEMENTE, CALIF.

APPROVED BY THE
 PLANNING COMMISSION
 this 20th day of DEC, 1965
 Resolution No. 65 P. 9
 Secretary *[Signature]*

Alton L. Ruden 6-10-1966
 ALTON L. RUDEN R.C.E. 10163
 City Engineer
 Oceanside, California

William A. Ayer
 W. A. AYER R.C.E. #10301
 March 29, 1966
 DATE