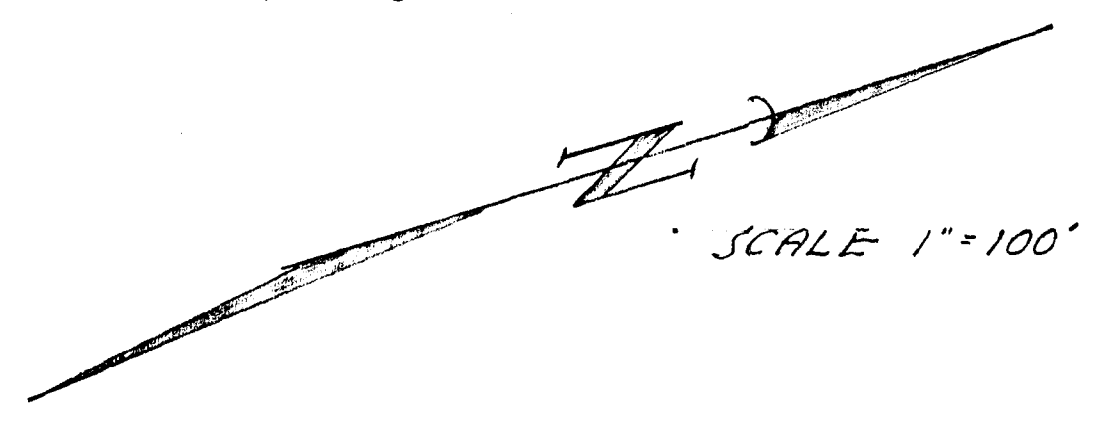
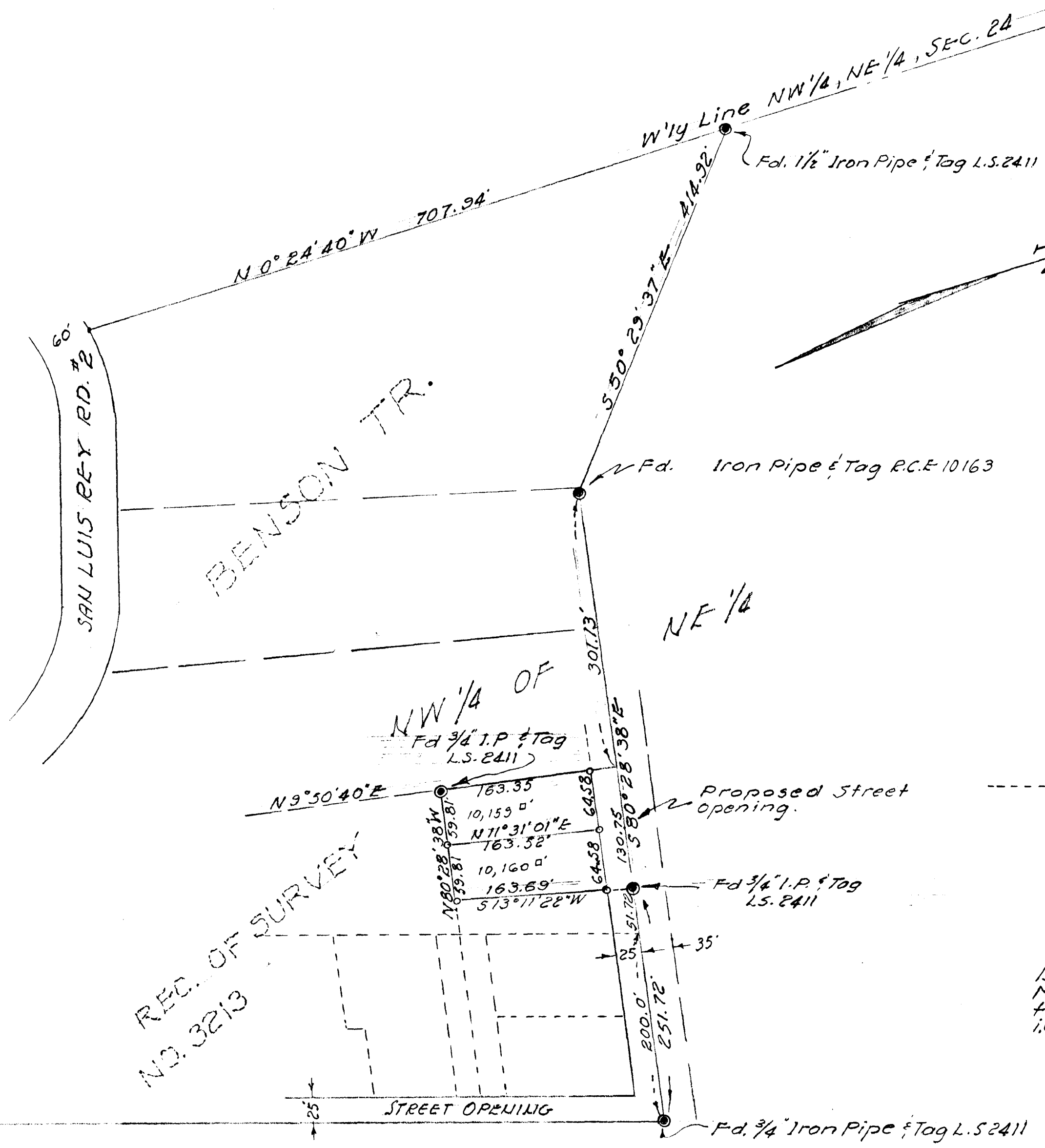


SPLIT LOT MAP #407



- LEGEND
- Set 3/4" Iron Pipe & Tag R.C.E. 10163
 - Found Mon. as indicated
 - Existing Property Lines

BASIS OF BEARINGS of this Map is the westerly line of the NW 1/4, NE 1/4, SEC. 24, T11S, R5W, i.e. N 0° 24' 40" W per R of S #3213

APPROVED
 Date 2-15-1966
 By: *Alton E. Paden*
 City Engineer

CITY OF OCEANSIDE
 SURVEY OF A PORTION OF
 NW 1/4 OF THE NE 1/4, SEC. 24
 T11S, R5W, SBB&M
 REQUESTED BY OCEANSIDE
 FEDERAL SAVINGS & LOAN
 SURVEYED BY CITY ENG. DEPT.
 2-14-1966
 DATE

DRAWN BY DAN M. B