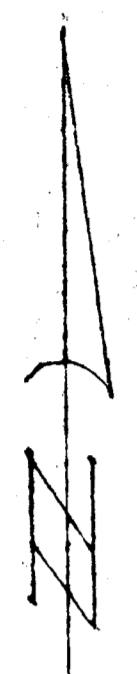
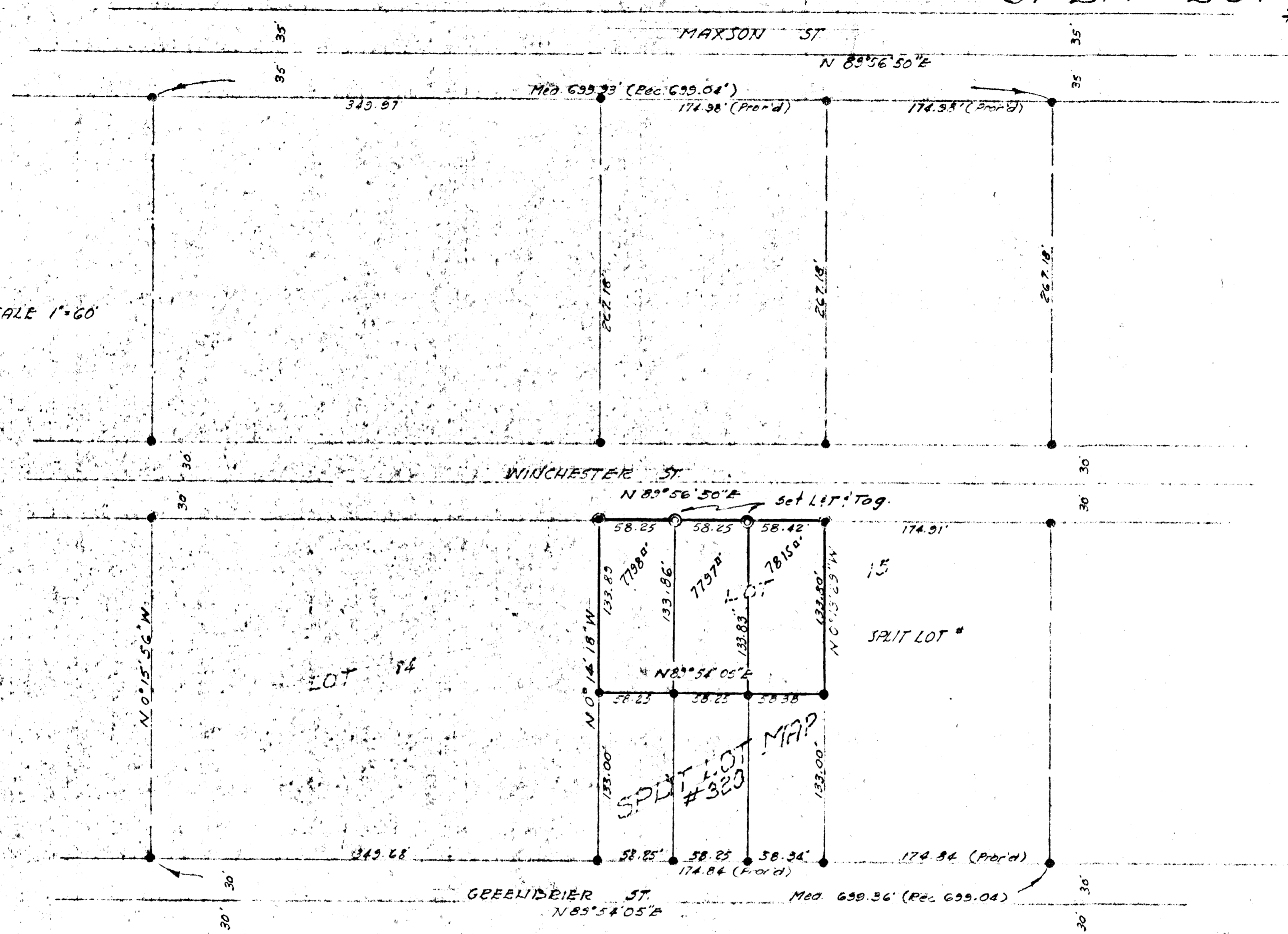


SPLIT LOT MAP # 406



SCALE 1"=60'



- LEGEND**
- 3/4" Iron Pipe Set with tag R.C.E. 10301
 - Monuments Fed with tag R.C.E. 10301
 - Lead Plug " " " "
 - " " Set " " " "

BASIS OF BEARINGS :- The centerline of Winchester St i.e. N 89° 56' 50" E

APPROVED BY THE PLANNING COMMISSION
 this 17th day of JAN 1966
 Resolution No. 66-P-4
 Secretary *Tom Bradley*

Approved: *Olton Ruden*
 Allen L. Eudern
 R.C.E. 10163
 2-8-1966
 DATE

CITY OF OCEANSIDE	
SURVEY OF A PORTION OF LOT 15 MAXSON & GRIFFIN'S SUB.	
MAP 433	
REQUESTED BY J. BLACKBURN	
SOUTH COAST ENGINEERING SERVICE	
<i>William G. Ayer</i> W. G. Ayer, R.C.E. 10351	FEB. 5, 1966 DATE