

RECORD OF SURVEY MAP NO. _____
OF LOTS I & J, BLOCK II, AND PORTIONS OF THE VACATED
STREET ADJOINING LOTS I & J, BLOCK II, SOUTH OCEANSIDE
PER MAP NO. 622 AS FILED IN THE SAN DIEGO COUNTY
RECORDER'S OFFICE FEBRUARY 7, 1890,
IN THE CITY OF OCEANSIDE, SAN DIEGO COUNTY, CALIFORNIA

SCALE 1" = 50'

MARCH, 1964

Office of
AVERY-FOWLER CONSULTANTS, INC.
 PROFESSIONAL
 CIVIL ENGINEERS AND LAND SURVEYORS
 LAND PLANNING AND CONSTRUCTION CONSULTANTS
 WASHINGTON AND PINE STREETS
 RED BLUFF, CALIF.
 OFFICES IN
 ANDERSON, RED BLUFF, NEWPORT BEACH
 CALIFORNIA

LEGEND

- ⊙ -- Set 3/4" x 24" Galvanized Iron Pipe Monument marked "LS 3082."
- -- Set nail in concrete in top of Concrete Block Wall, and marked Block Corner "LS 3082"

NOTES

1. By Resolution No. 479 the City Council of the City of Oceanside vacated and closed to public use that portion of the Southwesterly 15 feet of Tremont Street adjoining Lots "I" and "J" of Block II as shown hereon, and dedicated the remaining portion of said Street as an alley and abandoned the name of Tremont Street.
2. This original subdivision map from which these lots are taken shows no information on monumentation and little information on lot sizes. The lot, street, and alley lines shown hereon are derived in part from the existing improvements and in part from the accepted width of the lots and City data furnished, with the alley being located at right angles to Kelly Street.

LEGAL DESCRIPTION OF PROPERTY SURVEYED

"Lots "I" and "J" in block II of South Oceanside, in the City of Oceanside, County of San Diego, State of California, according to map thereof No. 622, filed in the office of the County Recorder of San Diego County February 7, 1890.
 Also, that portion of the Southwesterly 15 feet of Tremont Street adjoining the above described lots on the Northeast as vacated and closed to public use by Resolution No. 479 of the City Council of the City of Oceanside, in the Office of the County Recorder of San Diego County.
 Note: The above mentioned Resolution dedicated the remaining portion of said Street as an alley and abandons the name of Tremont Street."

COUNTY SURVEYOR'S CERTIFICATE

This map has been examined for conformance with the requirements of Chapter 15 of Division 3 of the Business and Professions Code this _____ day of _____, 19____.
 (Signed) _____
 COUNTY SURVEYOR

RECORDER'S CERTIFICATE

Filed for record this _____ day of _____, 19____,
 at _____ M. in Book _____ of _____ at page _____,
 at the request of _____
 (Signed) _____
 COUNTY RECORDER

SURVEYOR'S CERTIFICATE

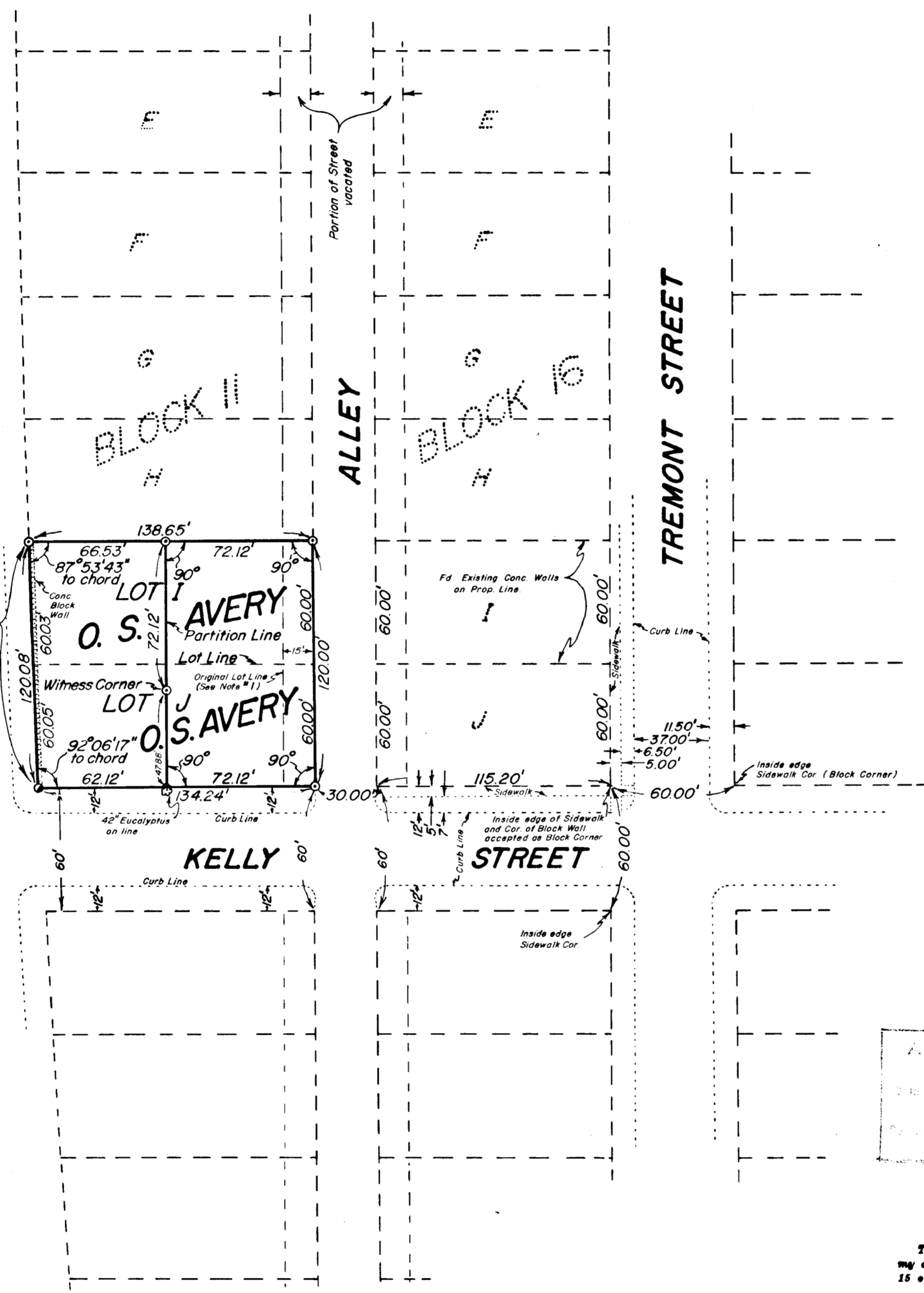
This map correctly represents a survey made by me or under my direction in conformance with the requirements of Chapter 15 of Division 3 of the Business and Professions Code at the request of O.S. AVERY AND JOSEPHINE AVERY in _____ APRIL _____, 1962
 (Signed and sealed) _____
 L. S. (or R. C. E.) No. 3082

APPROVED
 11-10-1964
 William P. Miller
 City Engineer

BASIS OF BEARINGS:
 NONE. TURNED ANGLES USED IN LIEU OF BEARINGS

ATCHISON, TOPEKA & SANTA FE RAILROAD

BROADWAY STREET



$R = 11,184.74'$
 $\Delta = 00^\circ 36' 55''$
 $L = 120.08'$