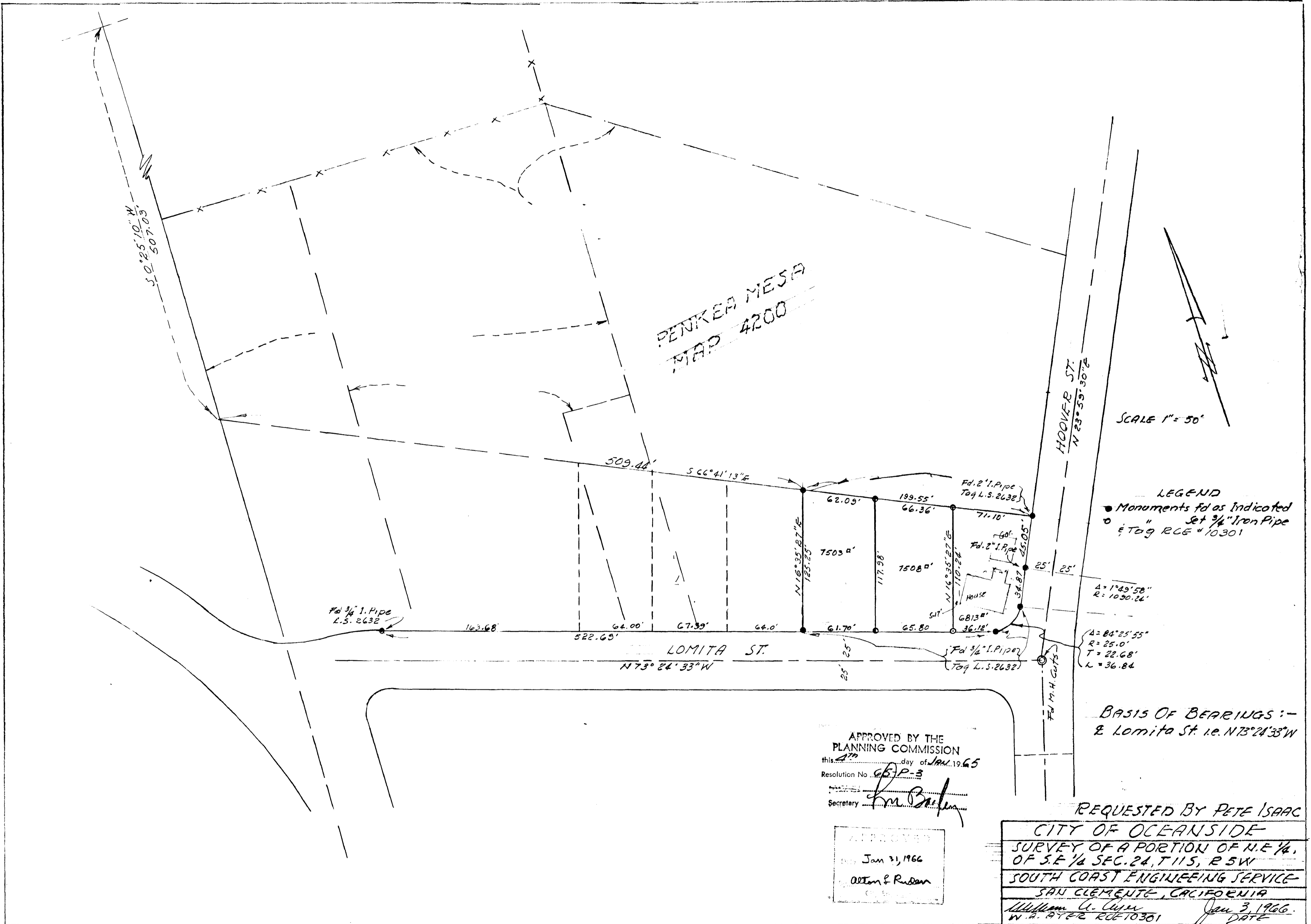


# SPLIT LOT MAP #39



PENNER MESA  
MAP 4200

SCALE 1" = 50'

LEGEND  
 ● Monuments fd as indicated  
 ○ " Set 3/4" Iron Pipe  
 † To RCE # 10301

Δ = 1° 49' 58"  
 R = 1030.26'  
 Δ = 84° 25' 55"  
 R = 25.0'  
 T = 22.68'  
 L = 36.84

BASIS OF BEARINGS :-  
 & Lomita St. i.e. N 73° 24' 33" W

APPROVED BY THE  
 PLANNING COMMISSION  
 this 27th day of JAN. 1965  
 Resolution No. 65P-3  
 Secretary *Ken Baer*

APPROVED  
 Jan 31, 1966  
 Allen & Ruden

REQUESTED BY PETE ISAAC

CITY OF OCEANSIDE  
 SURVEY OF A PORTION OF N.E. 1/4,  
 OF S.E. 1/4 SEC. 24, T. 11S, R. 5W  
 SOUTH COAST ENGINEERING SERVICE  
 SAN CLEMENTE, CALIFORNIA  
 William G. Cunn Jan 3, 1966.  
 W.A. PETER RCE 10301 DATE