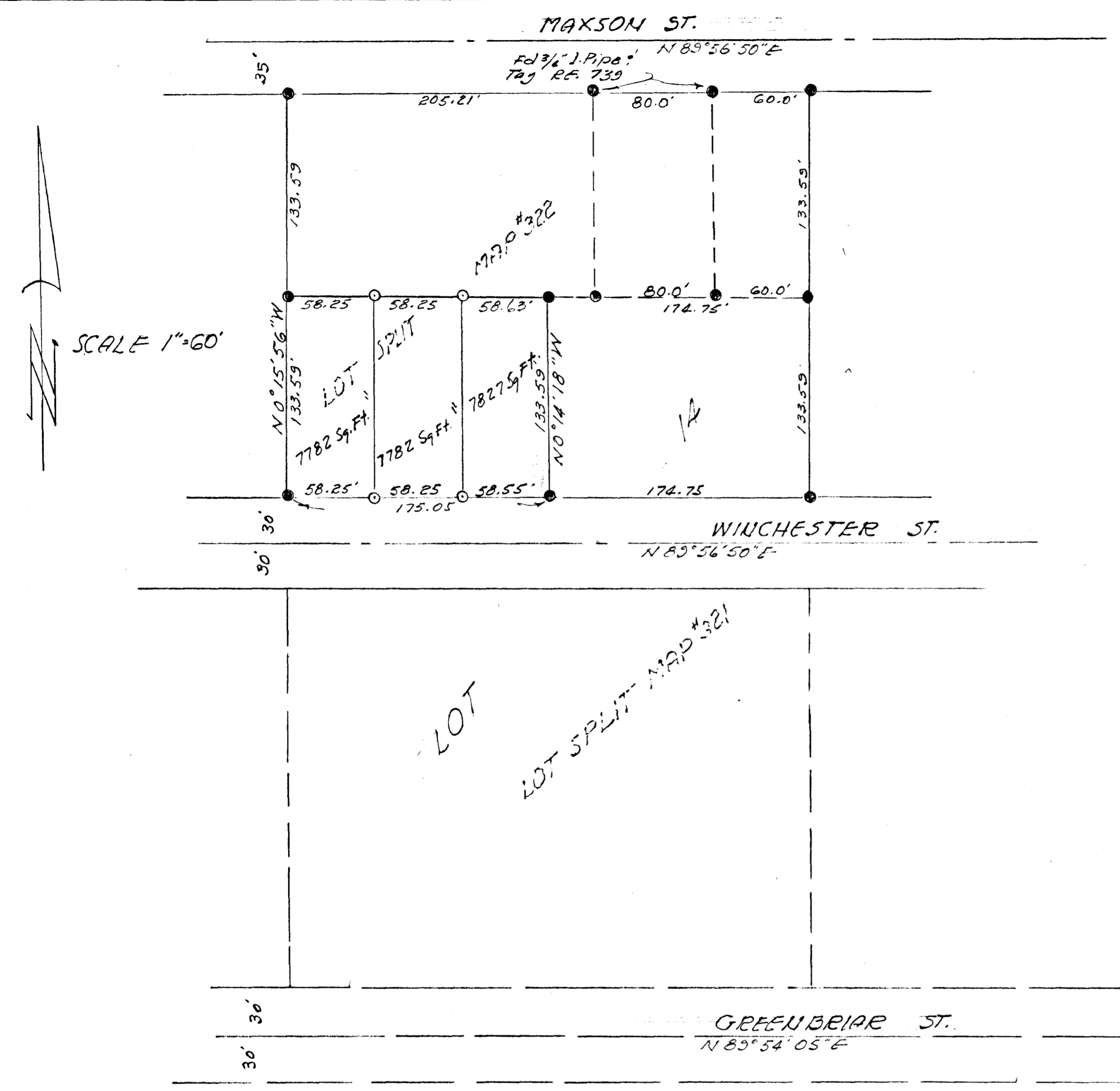


SPLIT LOT MAP #397



SCALE 1"=60'

LEGEND
 ○ Set $\frac{3}{4}$ " Iron Pipe & Tag R.C.E. 10301
 ● Fd " " " " " " " " unless otherwise noted

BASIS OF BEARINGS of this survey is the E of Maxson street i.e. $N 89^{\circ} 56' 50'' E$

EXHIBIT APPROVED # W.P.S. NO. 65-P56
 Adopted by Planning Commission 8-2-1965
 Attest: *[Signature]*

APPROVED
 Date Dec. 15 1965
 By *Alton Rubin*
 City Engineer

REQUESTED BY ELMER PETERS
 CITY OF OCEANSIDE
 SURVEY OF A PORTION OF
 LOT 1A MAXSON & GRIFFIN'S SUB.
 MAP 433
 SOUTH COAST ENGINEERING SERVICE
William A. Cunn
 W.A. Cunn R.C.E. 10301 Sept. 29, 1965