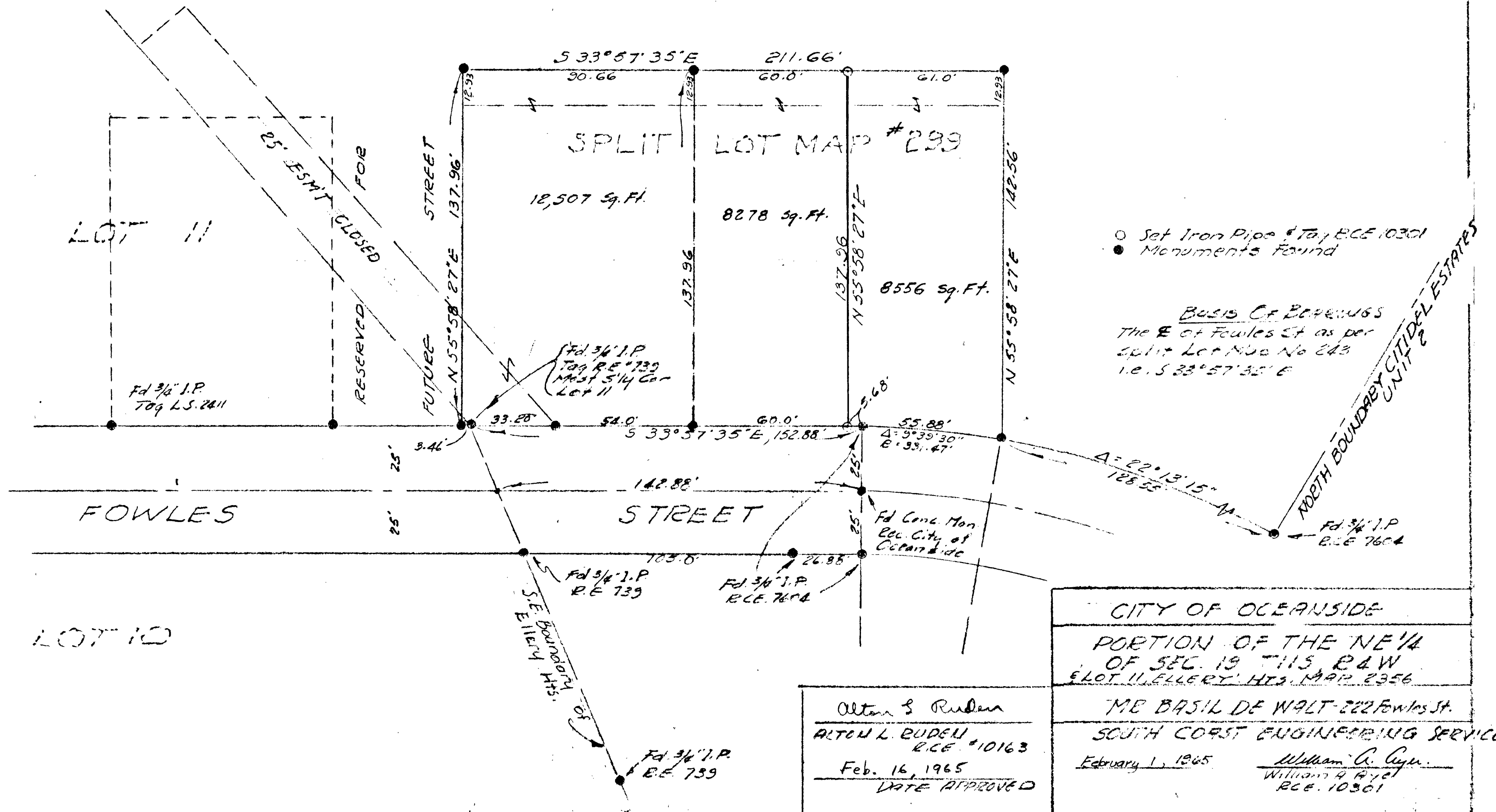
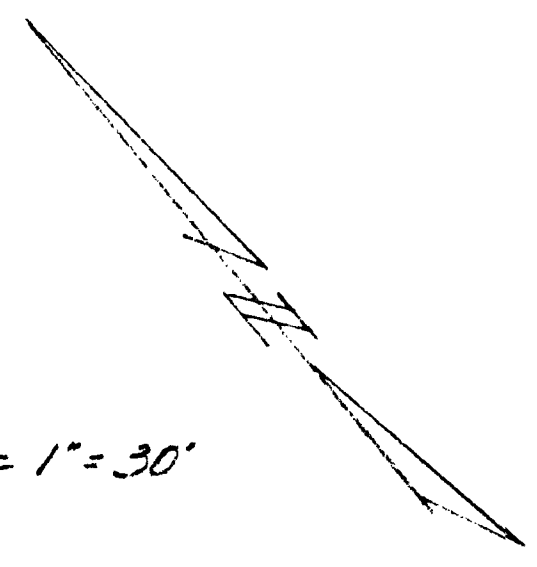


FOR NE 1/4  
SEC. 19  
T11S, R4W

SCALE 1"=30'



CITY OF OCEANSIDE	
PORTION OF THE NE 1/4 OF SEC. 19 T11S, R4W & LOT 11, ELLERY HTS. MAP 2356	
Alton & Ruden	MR. BASIL DE WALT - 222 Fowles St.
ALTON L. BUDEN R.C.E. #10163	SOUTH COAST ENGINEERING SERVICE
Feb. 16, 1965 DATE APPROVED	February 1, 1965 William A. Cypel R.C.E. 10301