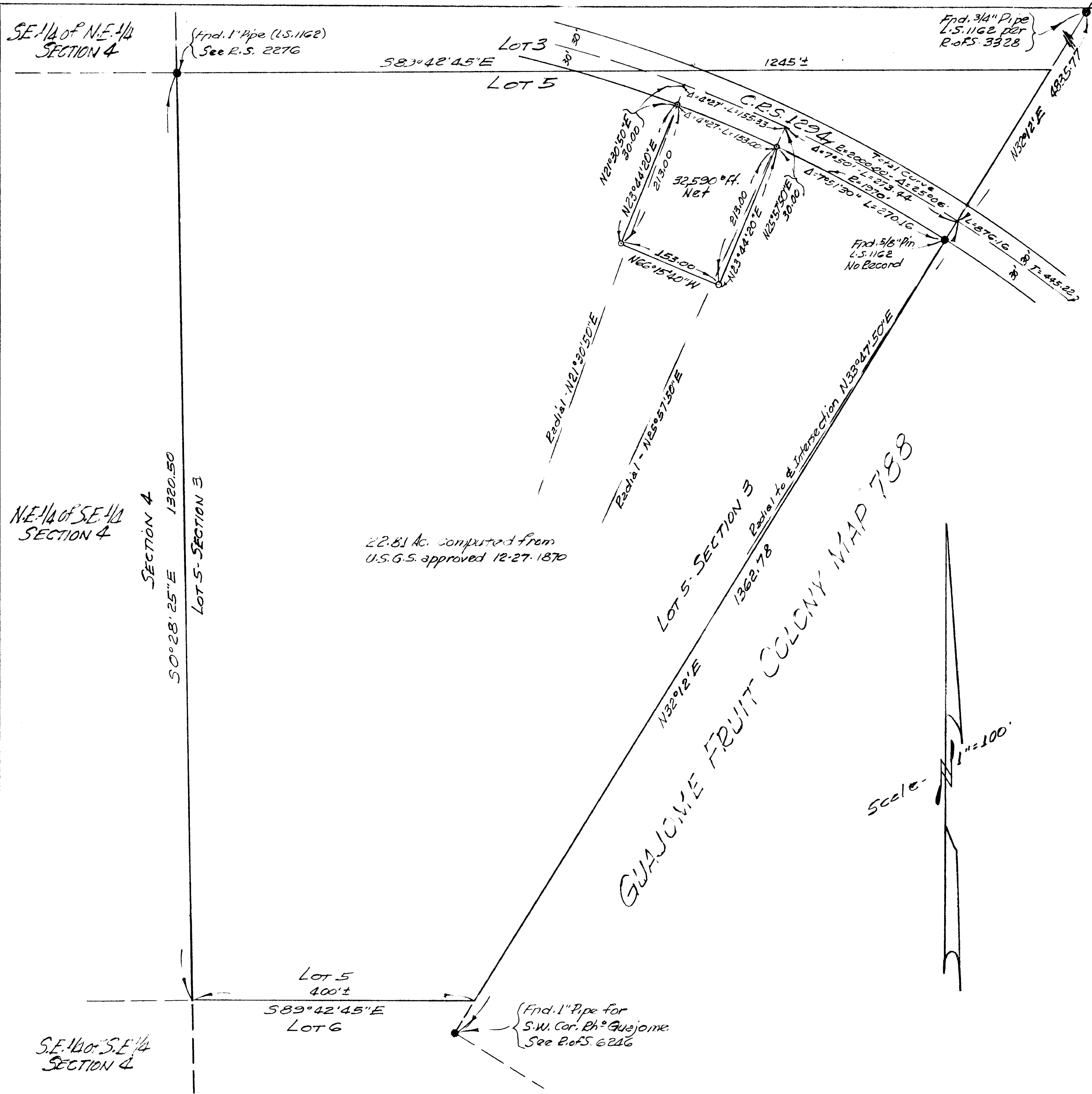


LOT SPLIT MAP No. 385



LOT SPLIT
 Showing a division of Lot 5-Section 3
 T.11S, R.4W. - S.B.B.&M.
 City of Oceanside, San Diego County
 California

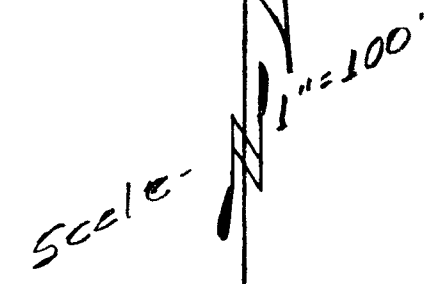
~ Legend ~

- - Indicates points found as noted.
- - Indicates set 3/4" x 18" pipe with cement core & brass disc stamped "L.S.1162"

The basis of bearings for this survey is the
 Northwesterly Line of the Rancho Guajome
 according to C.R.S. # 1294- Viz- N32°12'E

This map correctly represents a survey made
 by me or under my direction at the request
 Joe Yoshimura in November, 1964

N.P. Browne
 N.P. Browne - Licensed Surveyor No. 1162



Approved Alton S. Ruben 12-28-1964

Alton L. Ruden - R.C.E. 10163
 City Engineer