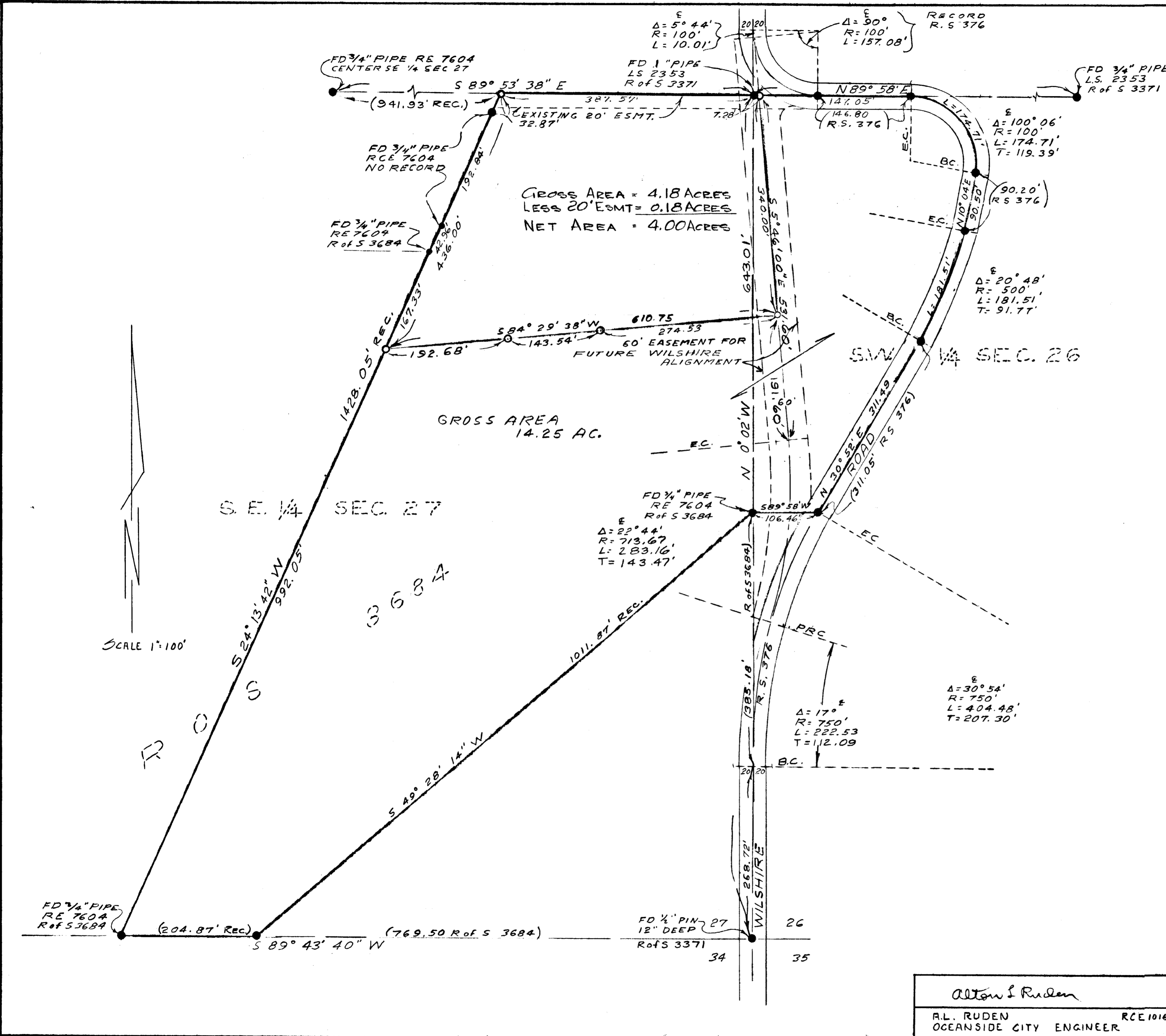


A SURVEY OF A PORTION OF THE SE 1/4 OF SECTION 27 AND THE SW 1/4 OF SECTION 26 T10S R4W S3B&M, CITY OF OCEANSIDE, COUNTY OF SAN DIEGO, STATE OF CALIFORNIA

BASIS OF BEARINGS THE EAST LINE OF SECTION 27 ACCORDING TO R OF S 3684 i.e. N 0° 02' W

LEGEND
 ○ SET 3/4" PIPE TAGGED RCE 7604
 ● FOUND AS SHOWN OR RECORD PER R OF S 3684



REVISED 3/9/66 PROPOSED 60' ESMT. H.L.T.		
LOT SPLIT		
for MR. CHARLES R. LINVILLE		
OCEANSIDE,		CALIFORNIA
DRAWN <i>M.B.M.</i>	DRESSLHAUS ENGINEERS <i>E. Brian Smith</i>	DATE 10-30-64
CHECKED H.L.T.	E. BRIAN SMITH RCE 13,817	SCALE 1" = 100'
APPROVED <i>Alton S Ruden</i> A.L. RUDEN OCEANSIDE CITY ENGINEER RCE 10163	528 SO. HILL STREET OCEANSIDE, CALIFORNIA	SHEET 1 OF 1