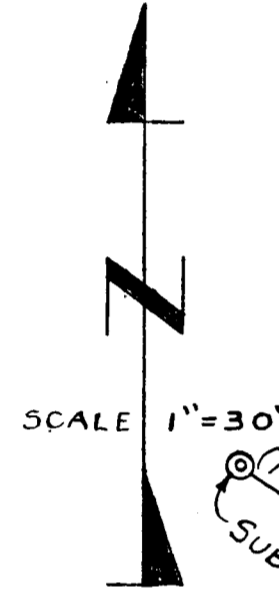
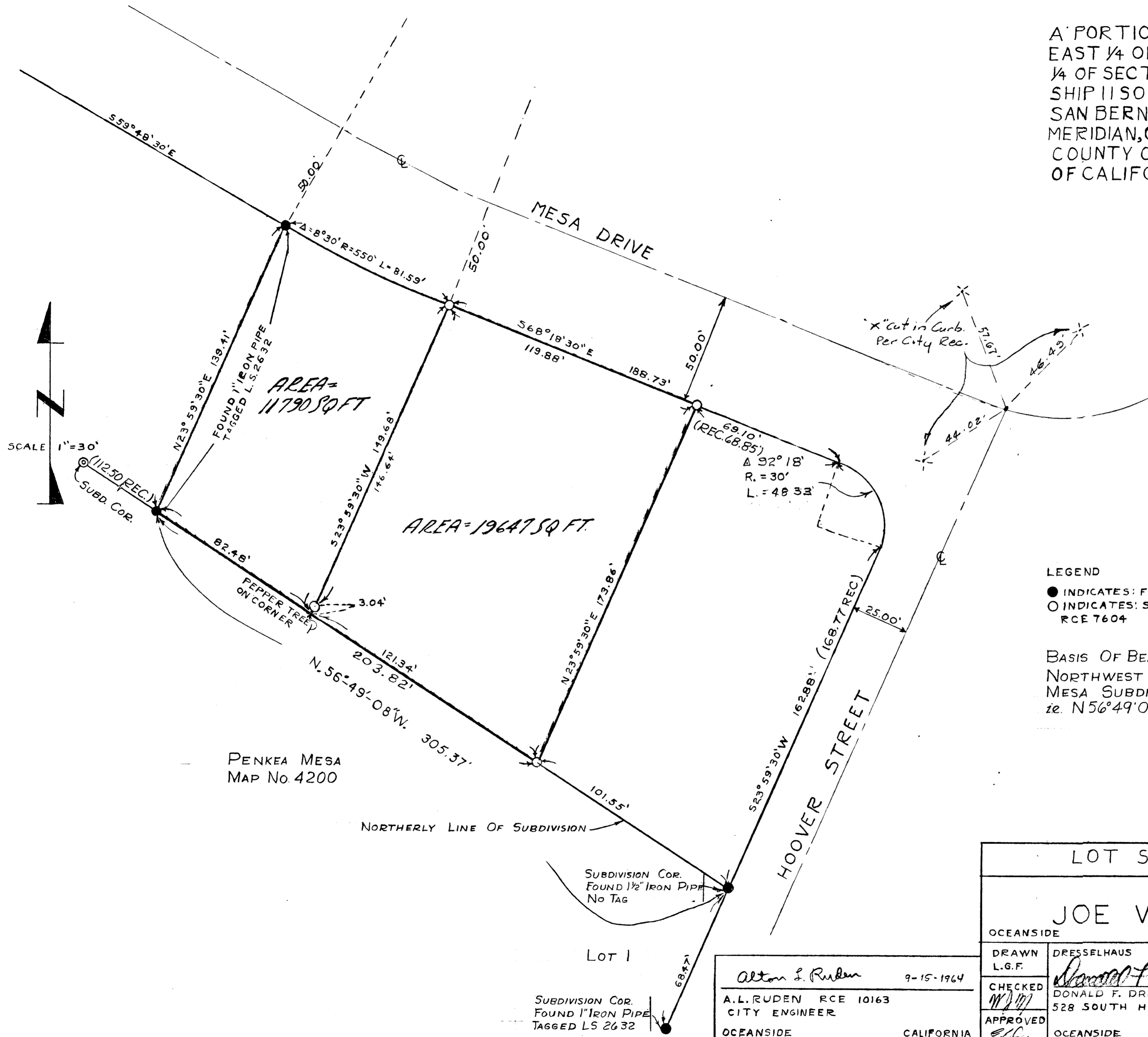


A PORTION OF THE NORTH-EAST 1/4 OF THE SOUTHEAST 1/4 OF SECTION 24, TOWNSHIP 11 SOUTH, RANGE 5 WEST, SAN BERNARDINO BASE AND MERIDIAN, CITY OF OCEANSIDE, COUNTY OF SAN DIEGO, STATE OF CALIFORNIA.



LEGEND
 ● INDICATES: FOUND AS SHOWN
 ○ INDICATES: SET 1" IRON PIPE TAGGED RCE 7604

BASIS OF BEARINGS:
 NORTHWEST LINE OF PENKEA MESA SUBDIVISION MAP #4200
 i.e. N56°49'08" W.

PENKEA MESA
 MAP No. 4200

LOT SPLIT MAP			
FOR			
JOE WESELOH			
OCEANSIDE		CALIFORNIA	
DRAWN L.G.F.	DRESSELHAUS	ENGINEERS	DATE 7/26/63
CHECKED [Signature]	DONALD F. DRESSELHAUS RCE 7604		SCALE 1" = 30"
APPROVED [Signature]	528 SOUTH HILL STREET 722-2126		SHEET 1 OF 1
OCEANSIDE CALIFORNIA		OCEANSIDE CALIFORNIA	

Alton L. Ruden 9-15-1964
 A.L. RUDEN RCE 10163
 CITY ENGINEER
 OCEANSIDE CALIFORNIA