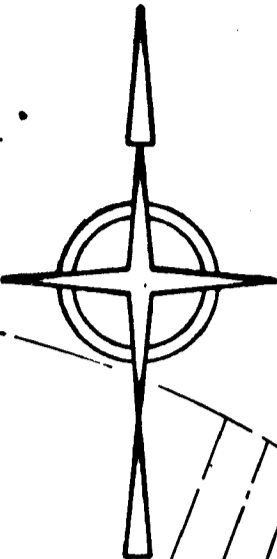
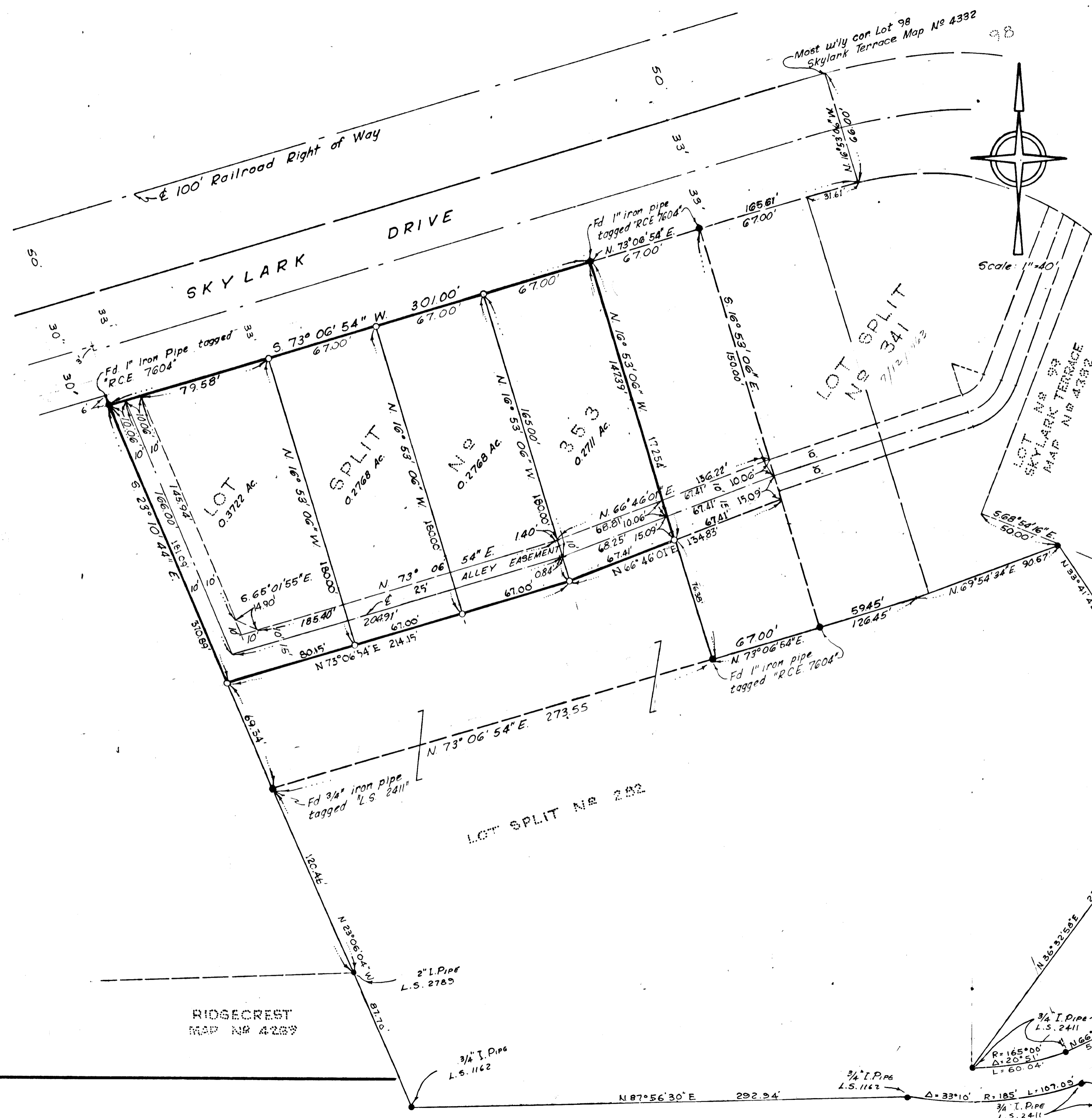


LOT SPLIT MAP

for

RON QUIGLEY

A portion of the Northwest 1/4 of the Northwest 1/4 of Section 30, Township 11 South, Range 4 West, San Bernardino Base & Meridian, in the City of Oceanside, County of San Diego, State of California.



Legend:

- Indicates monument found as shown
- Indicates set 3/4" iron pipe tagged "RCE 14505".

I hereby certify that this map correctly represents a survey made under my supervision in May, 1964.
 Date June 8, 1964
 Richard J. Tool, R.C.E. 14505

City Engineer, City of Oceanside
 Date
 A.L. Ruden, R.C.E. 10163

341 - 7/12/1963
 353 - 1/3/1964

RIDGECREST
 MAP NO 4289

MOOTE, KEMPA & GALLOWAY, INC.
 CIVIL ENGINEERS LAND PLANNERS LAND SURVEYORS
 ARIZONA, CALIFORNIA, NEVADA