

# LOT SPLIT MAP No. 370

Showing a division of a portion of the S.W. 1/4 of Section 9 - T.11S, R.4W. - S.B.B. & M. City of Oceanside, San Diego County, Calif.

Scale - 1" = 60'

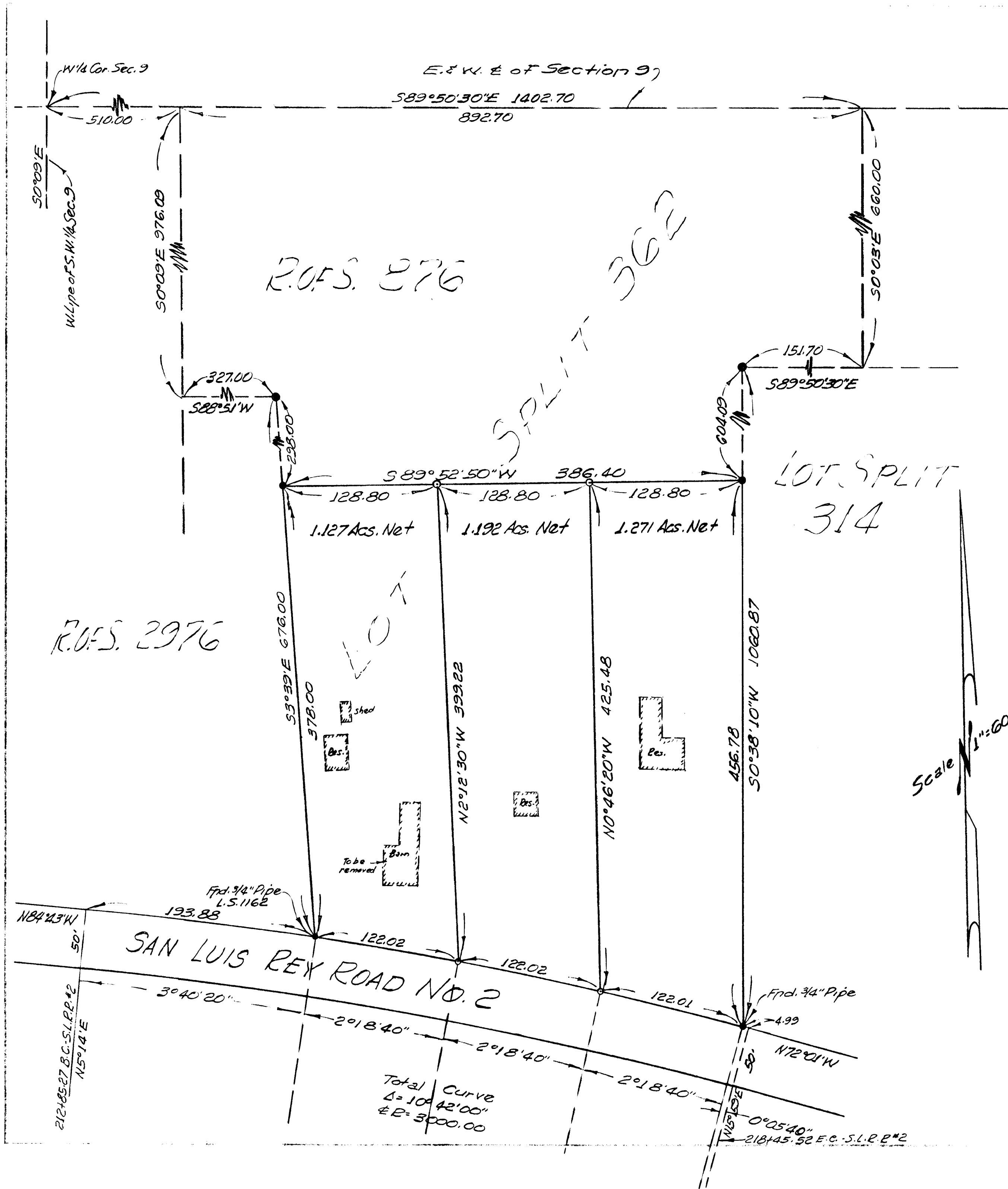
The basis of bearings for this survey is the E'ly line of Lot Split No. 362 - V.13 - 50°38'10"W

### ~ LEGEND ~

- Indicates found 1" pipe (L.S. 1162) per Lot Split Map No. 362 unless otherwise noted.
- Indicates set 3/4" pipe with cement core and brass disc marked "L.S. 1162"

This map correctly represents a survey made by me or under my direction at the request of H.D. Brown in April, 1964

N.P. Browne By Bruce B. Enright L.S. 2896  
N.P. Browne - Licensed Surveyor No. 1162



Scale 1" = 60'

Approved

Alton L. Euden 4-20-1964  
Alton L. Euden - P.C.E. 10163  
City Engineer