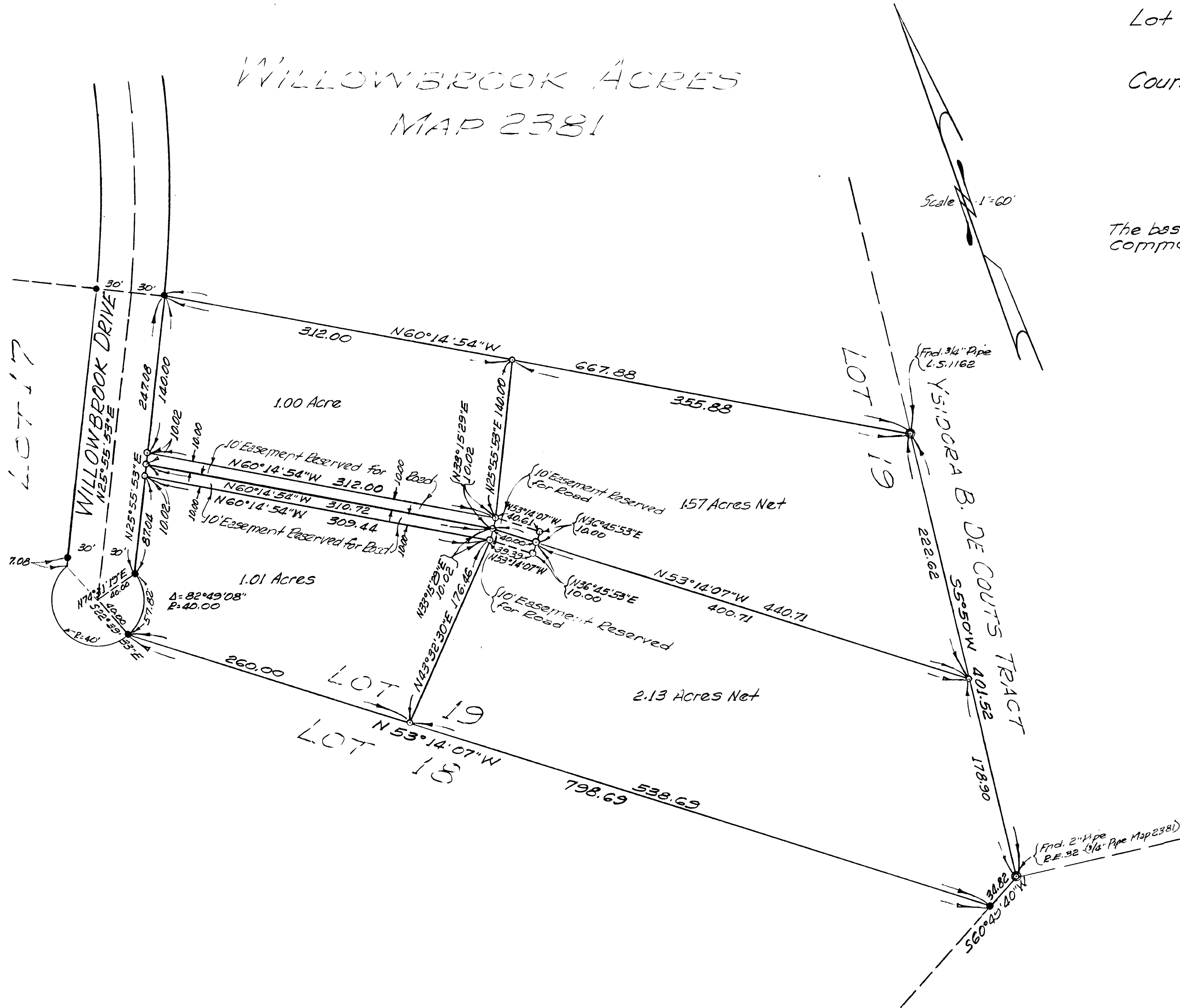


LOT SPLIT MAP No. 365

Showing a division of a portion of
 Lot No. 19-Willowbrook Acres-Map 2381
 City of Oceanside
 County of San Diego, California

WILLOWBROOK ACRES
 MAP 2381



The basis of bearing for this survey is the Line
 Common to Lots 18 & 19 - Map 2381
 Viz - $N53^{\circ}14'07''W$

LEGEND

- Indicates Frd. 3/4" Pipe (R.E. 32) per Map 2381
- ⊙---Indicates Points Found as noted.
- Indicates Set 3/4" x 18" Pipe with cement plug and brass disc marked "L.S. 1162"

This map correctly represents a survey made
 by me or under my direction at the request
 of Robert S. Abilez in January, 1964

By N.P. Browne
 N.P. Browne of Browne & Vogt Inc.

Approved Alton L. Ruden 3-30-1964
 Alton L. Ruden P.C.E. 10163
 City Engineer