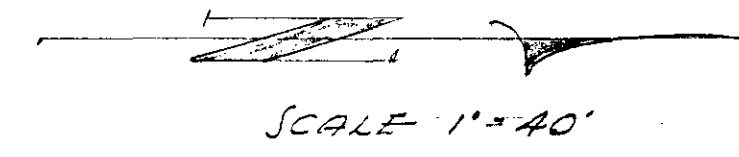
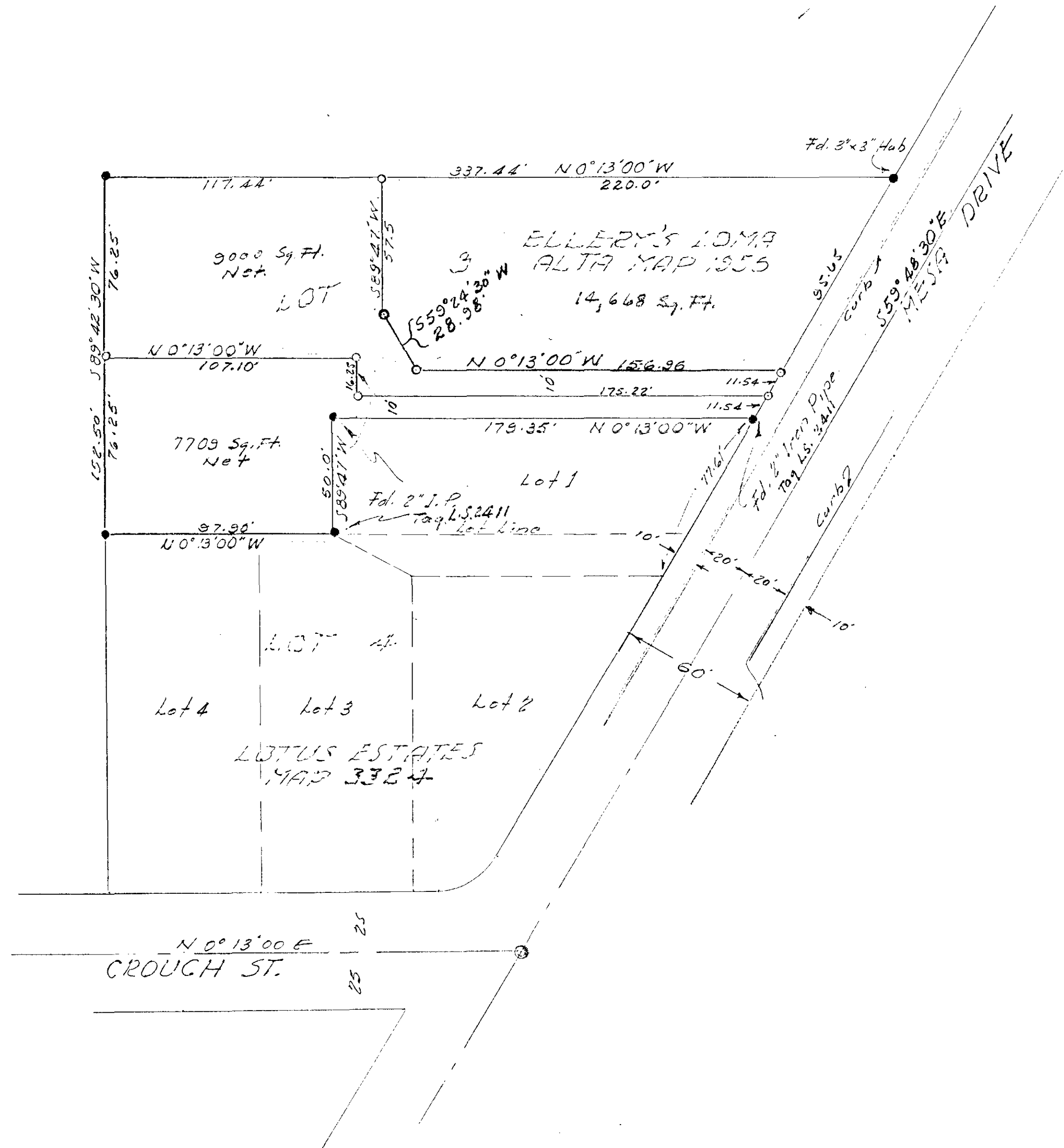


SPLIT LOT MAP # 364



LEGEND

- Monuments found with tag L.S. 2411
- " " Set " " R.C.E. 10301

BASIS OF BEARINGS is the E of Mesa Drive as shown on Map #1956
i.e. $559^{\circ}48'30"E$

APPROVED BY THE
PLANNING COMMISSION
this 1st day of Jan 1964
Resolution No. 63-P94
Secretary [Signature]

Approved: Alton K. Kelen
R.C.E. #10163
3-13-1964
DATE

REQUESTED BY H. BARON	
CITY OF OCEANSIDE	
SURVEY OF A PORTION OF LOT 3 ELLERY'S LOMA ALTA ADD.	
SOUTH COAST ENGINEERING SERVICE	
<u>William C. Cooper</u> R.C.E. 10301	JANUARY 23, 1964 DATE