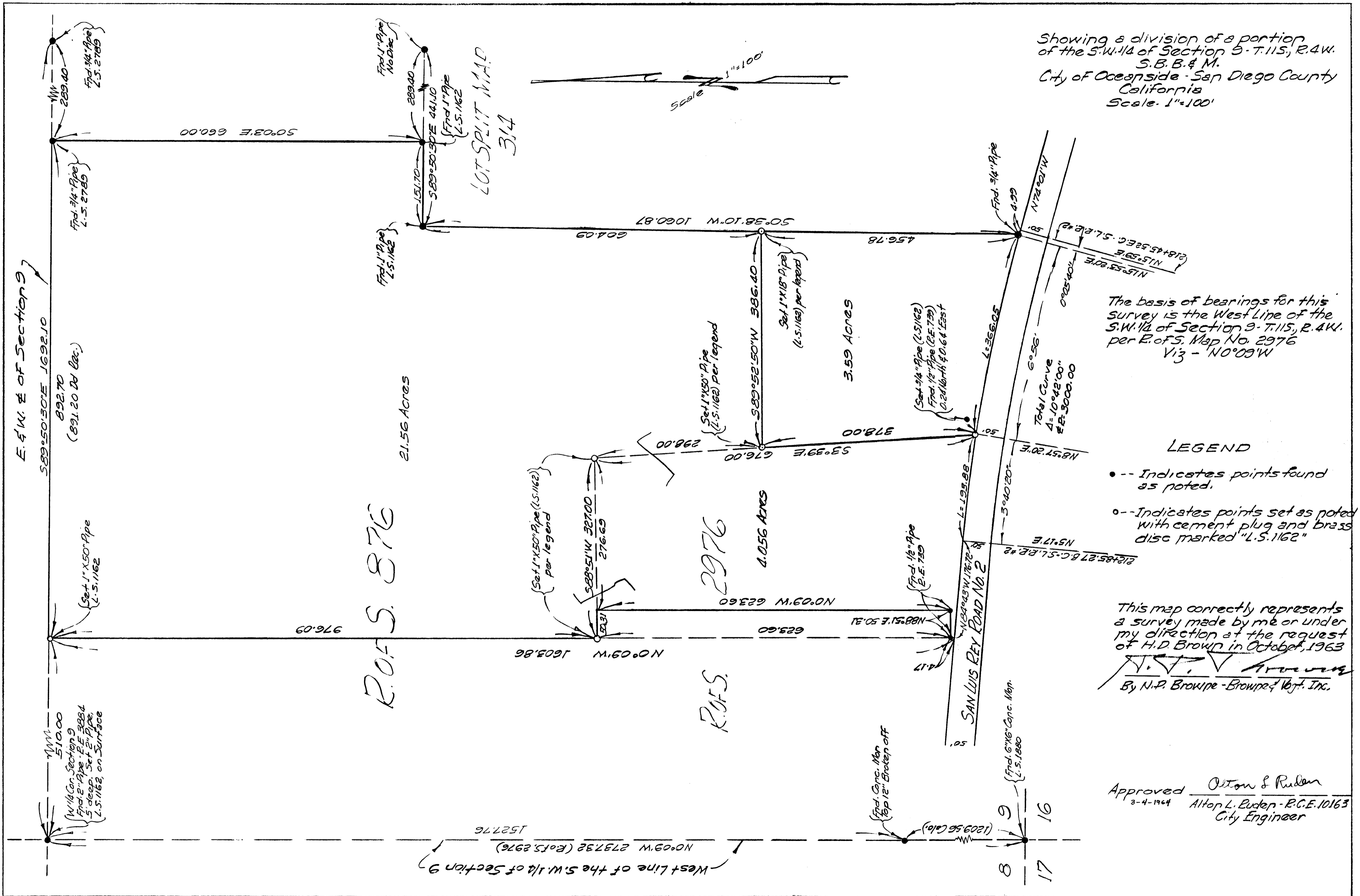


# LOT SPLIT MAP 362

Showing a division of a portion  
of the S.W. 1/4 of Section 9 - T. 115, R. 4W.  
S.B.B. & M.  
City of Oceanside - San Diego County  
California  
Scale: 1"=100'



The basis of bearings for this  
survey is the West Line of the  
S.W. 1/4 of Section 9 - T. 115, R. 4W.  
per R.O.S. Map No. 2976  
V13 - N 0° 09' W

- LEGEND**
- -- Indicates points found as noted.
  - o -- Indicates points set as noted with cement plug and brass disc marked "L.S. 1162"

This map correctly represents  
a survey made by me or under  
my direction at the request  
of H.D. Brown in October, 1963  
*N.P. Browne*  
By N.P. Browne - Browne & Co., Inc.

Approved *Olton & Ruden*  
3-4-1964 *Alton L. Ruden - R.C.E. 10163*  
City Engineer