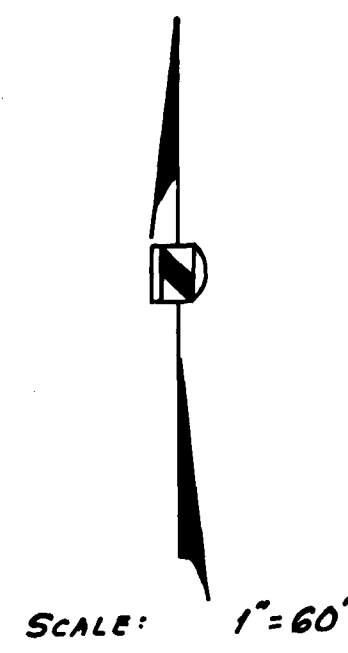
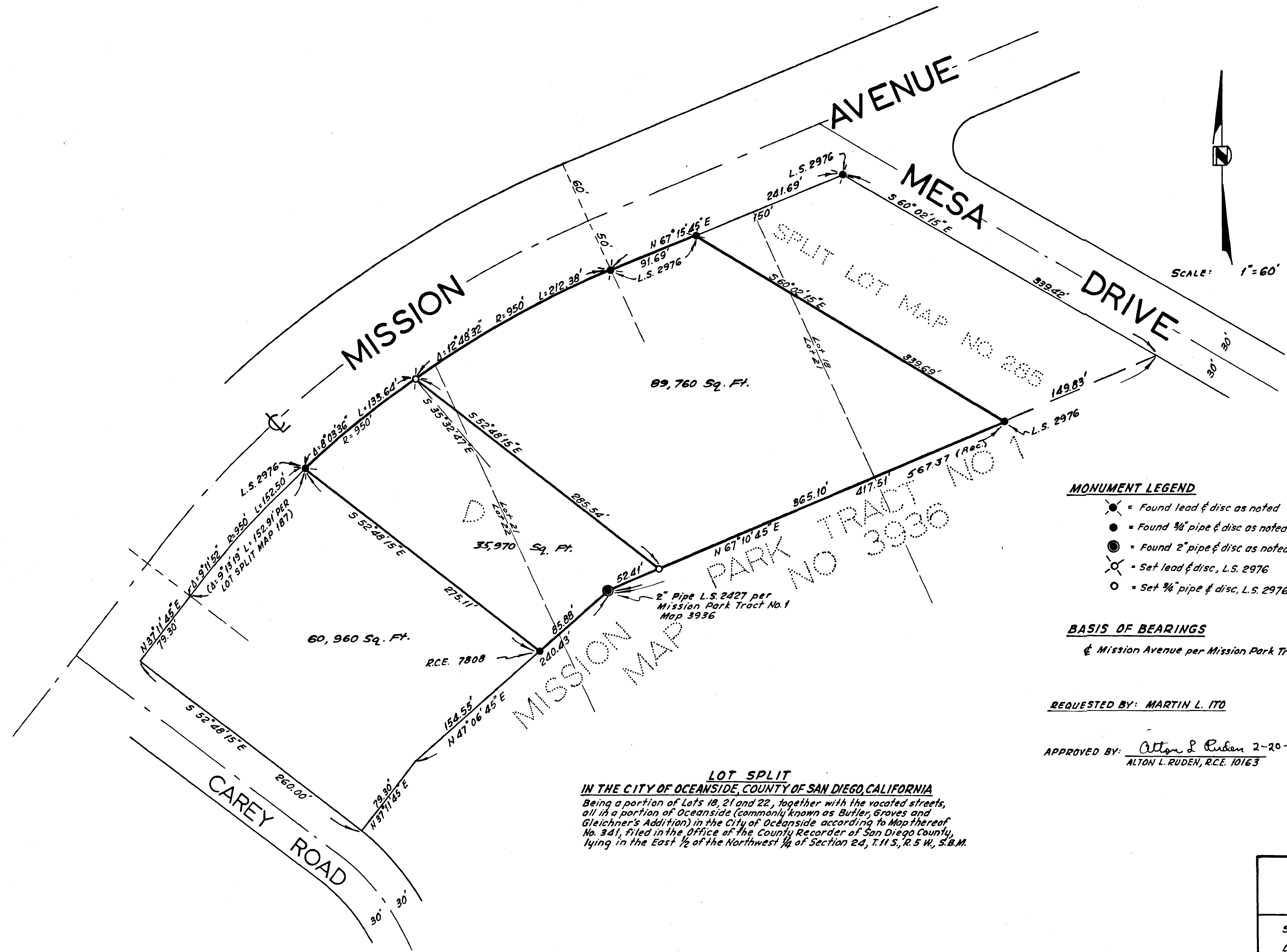


LOT SPLIT MAP



MONUMENT LEGEND

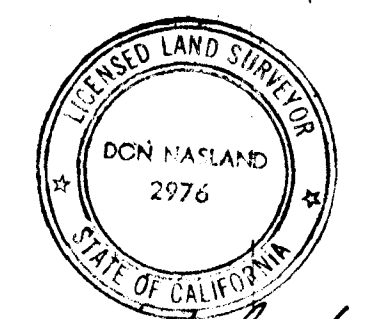
- ⊗ = Found lead & disc as noted
- = Found 3/4" pipe & disc as noted
- ⊙ = Found 2" pipe & disc as noted
- ⊗ = Set lead & disc, L.S. 2976
- = Set 3/4" pipe & disc, L.S. 2976

BASIS OF BEARINGS

⊕ Mission Avenue per Mission Park Tract No. 1, Map No. 3936, i.e. N 67° 15' 45" E

REQUESTED BY: MARTIN L. ITO

APPROVED BY: Alton L. Ruden 2-20-1964
ALTON L. RUDEN, R.C.E. 10163



Don Nasland
DON NASLAND L.S. 2976

LOT SPLIT
IN THE CITY OF OCEANSIDE, COUNTY OF SAN DIEGO, CALIFORNIA
Being a portion of Lots 18, 21 and 22, together with the vacated streets, all in a portion of Oceanside (commonly known as Butler, Graves and Gleichner's Addition) in the City of Oceanside according to Map thereof No. 341, filed in the Office of the County Recorder of San Diego County, lying in the East 1/2 of the Northwest 1/4 of Section 24, T. 11 S., R. 5 W., S.B.M.

DON NASLAND
ENGINEERING AND SURVEYS
3913 ALABAMA ST. SAN DIEGO
TEL. 296-6373

SCALE: 1" = 60'
DATE: 12-11-63
JOB NO. 1160-63