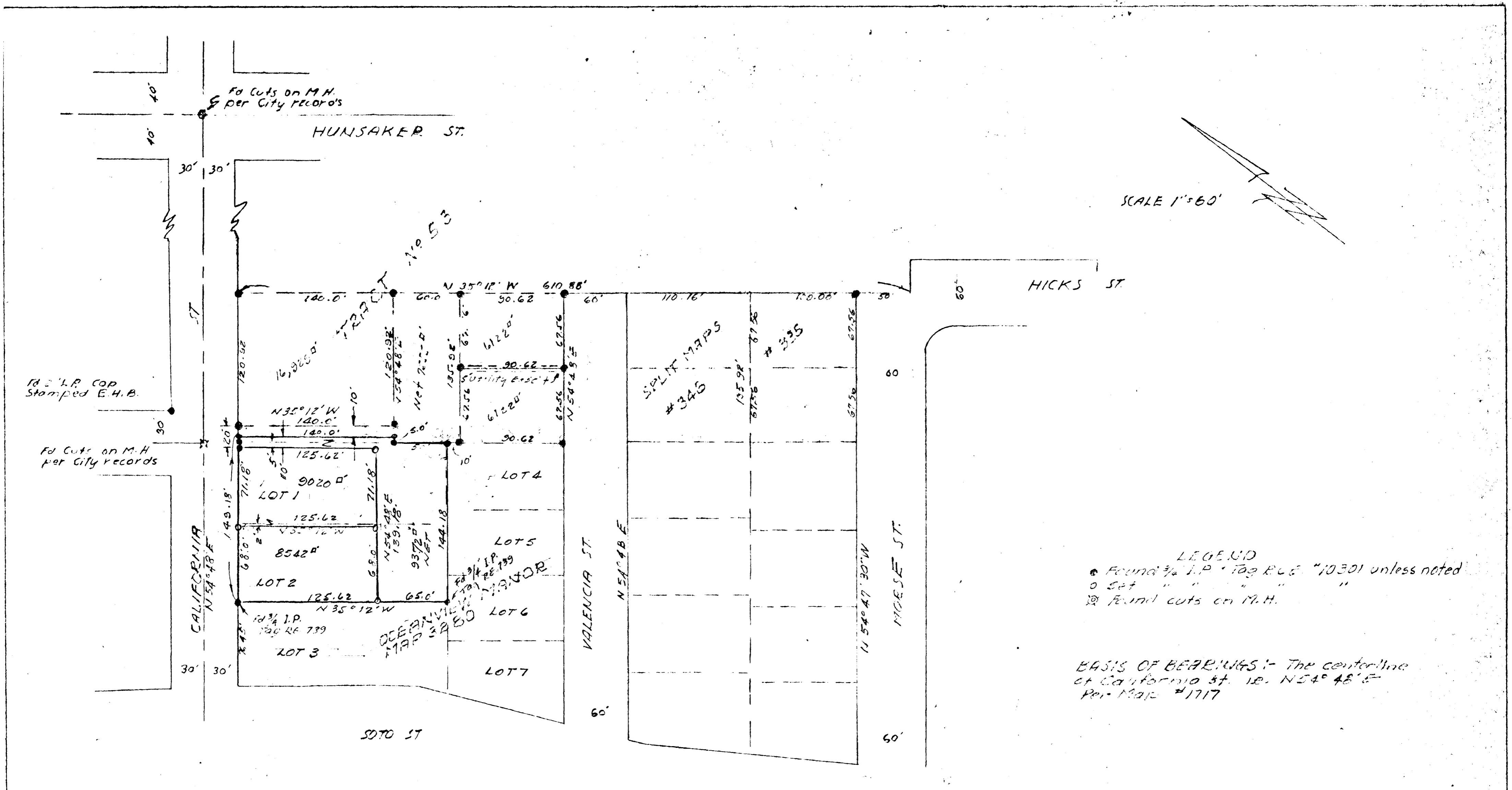


# SPLIT LOT MAP #358



SCALE 1"=60'

**LEGEND**  
 ● Found 3/4 I.P. 10301 unless noted  
 ○ Set " " " " " "  
 ⊗ Found cuts on M.H.

**BASIS OF BEARINGS:** - The centerline of California St. is N 54° 48' E - Per Map #1717

**APPROVED**  
 Date: 01 Jan 1964  
 By: 1-4-1964  
 City Engineer

**APPROVED BY THE PLANNING COMMISSION**  
 this 4th day of Feb., 1963  
 Resolution No. 62 P 2  
 Secretary [Signature]

**REQUESTED BY F.M. HOWELL**  
 CITY OF OCEANSIDE  
 SURVEY OF A PORTION OF TRACT 53  
 HOTELING LANDS MAP 1717  
 SOUTH COAST ENGINEERING SERVICE  
 William A. Lynn, FEBRUARY 4, 1962  
 K.C.C. #10301 DATE