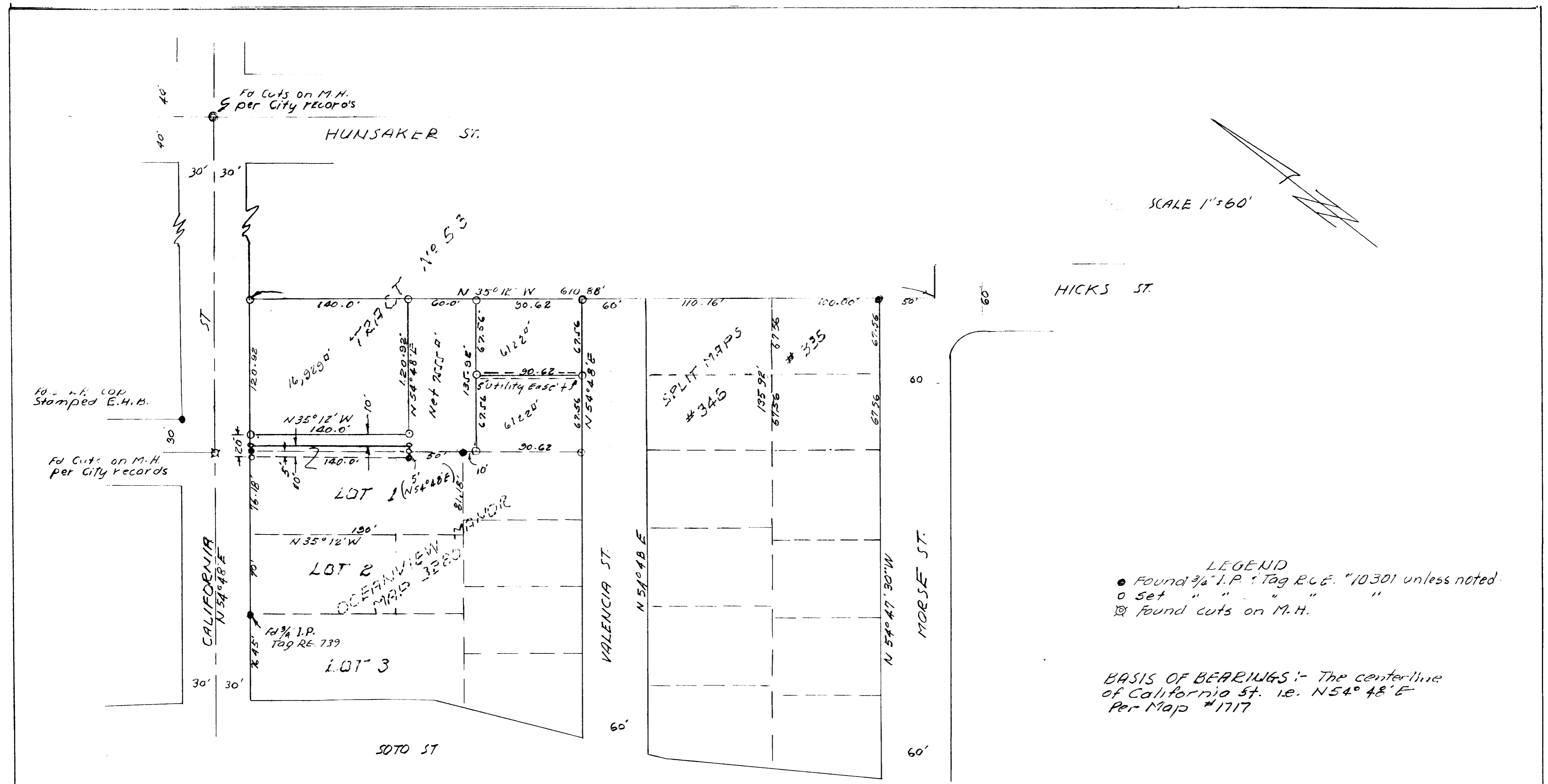


SPLIT LOT MAP #352



SCALE 1"=60'

LEGEND
 ● Found 3/4" I.P. Tag R.C.E. "10301 unless noted.
 ○ Set " " " " "
 ⊗ Found cuts on M.H.

BASIS OF BEARINGS:- The centerline of California St. i.e. N54° 48' E Per Map #1717

APPROVED
 Date 12-5-1963
 By *Alton Rubin*
 City Engineer

APPROVED BY THE PLANNING COMMISSION
 this 4th day of Feb 1963
 Resolution No. 63-199
 Secretary *Tom Boyer*

REQUESTED BY **ELMER HEATH**
 CITY OF OCEANSIDE
 SURVEY OF A POR OF TRACT 53
 HOTELING LANDS, MAP 1717
 SOUTH COAST ENGINEERING SERVICE
William A. Ayer DECEMBER 3, 1963
 R.E.E. 10301 DATE