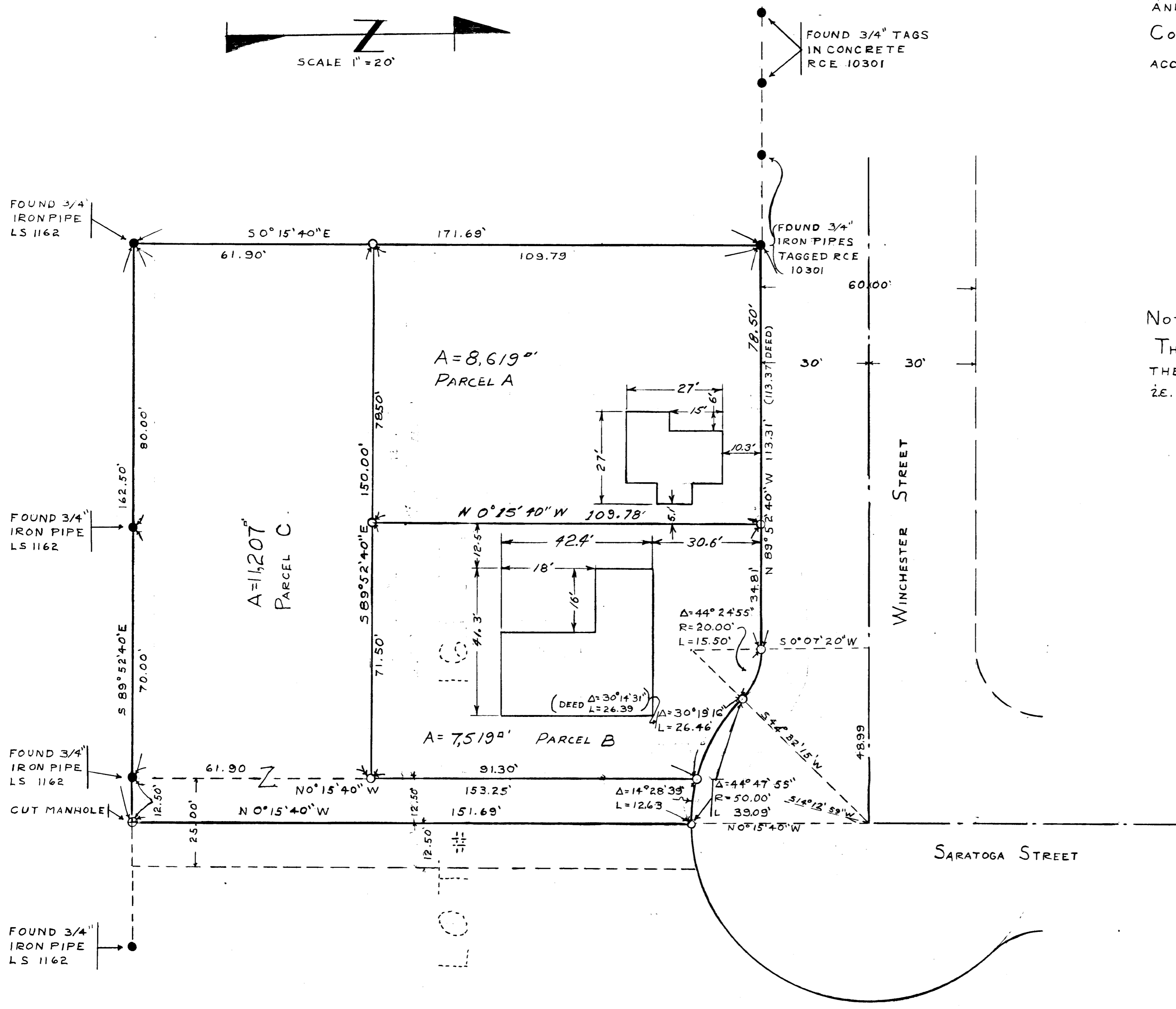
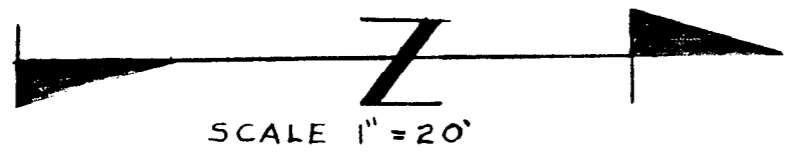


A SURVEY OF A PORTION OF LOT #16 OF MAXON AND GRIFFIN'S SUBDIVISION IN THE CITY OF OCEANSIDE, COUNTY OF SAN DIEGO, STATE OF CALIFORNIA, ACCORDING TO MAP No 433



NOTE

THE BASIS OF THE BEARINGS FOR THIS SURVEY IS THE WESTERLY LINE OF LOT #16 R OF S NO. 2365 I.E. SOUTH 0° 15' 40" EAST

APPROVED BY THE PLANNING COMMISSION
 This 7th day of 12, 1963
 Resolution No. 67912
 Secretary *R. B. B...*

LEGEND
 ● INDICATES: FOUND AS SHOWN
 ○ INDICATES: SET 1" IRON PIPE TAGGED RCE 7604
 ⊕ INDICATES: SET AS SHOWN

APPROVED
 Date 10-18-63
 By *Alton S. B...*
 City Engineer

LOT SPLIT MAP		
FOR		
MR. DON NEWMAN		
OCEANSIDE	CALIFORNIA	
DRAWN L.G.F.	DRESSELHAUS ENGINEERS <i>Donald F. Dresselhaus</i>	DATE 8-29-63
CHECKED H.L.T.	DONALD F. DRESSELHAUS RCE 7604	SCALE 1" = 20'
APPROVED RAG	528 SOUTH HILL STREET 722-2161 OCEANSIDE CALIFORNIA	SHEET 1 OF 1