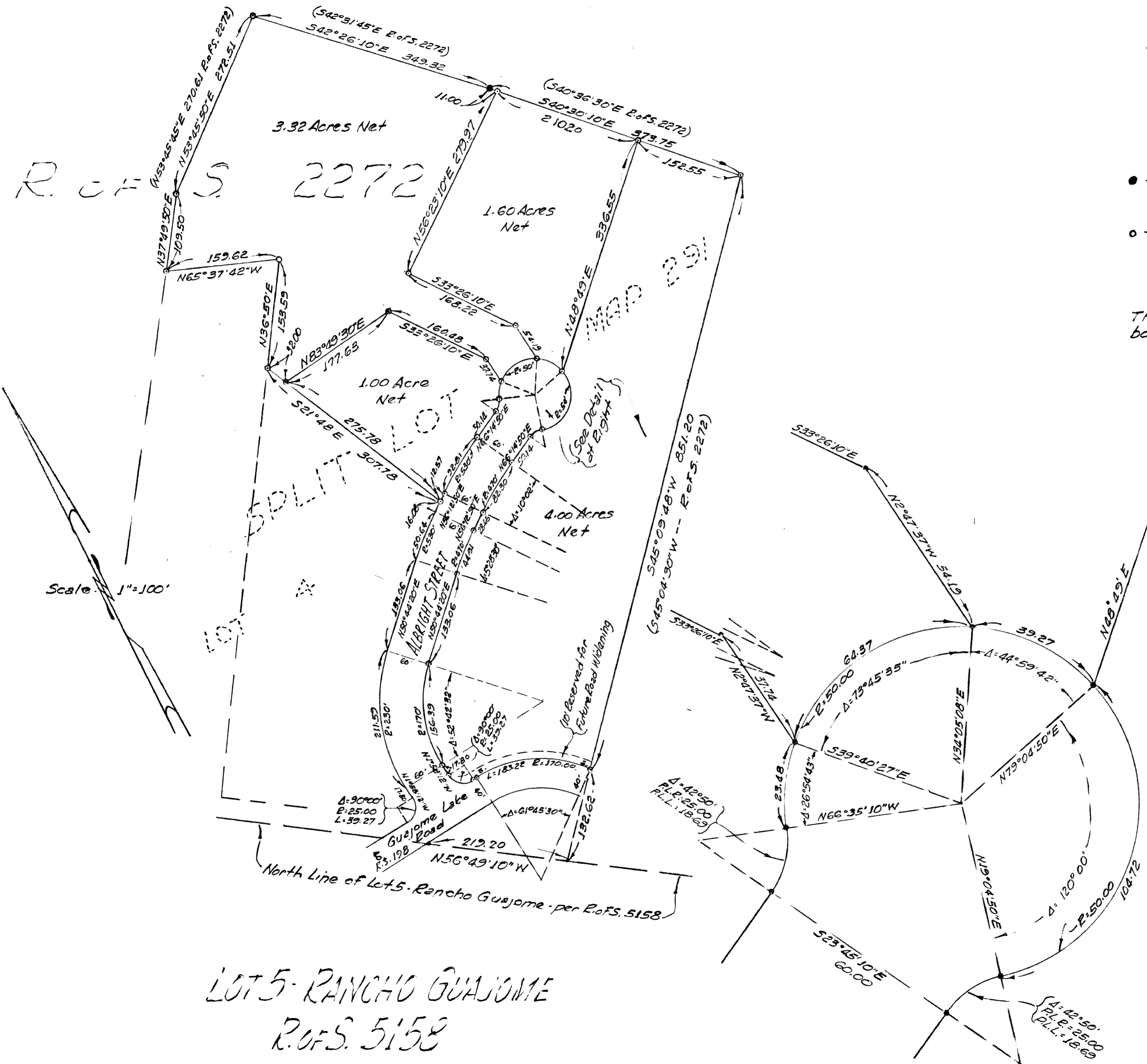


# LOT SPLIT MAP No. 344

A PORTION OF LOT 4 - RANCHO GUAJOME  
 CITY OF OCEANSIDE  
 SAN DIEGO COUNTY, CALIFORNIA  
 MAP No. S.C. 10201



- Indicates found 3/4" Pipes "L.S. 1162" per R.O.F.S. 2272 & Lot Split Map Nos. 240-291, unless otherwise noted.
- o - Indicates set 3/8"x18" Steel Pin-Stamped "L.S. 1162"

The basis of bearings for this survey is the N.E. 1/4 boundary line of R.O.F.S. Map No. 5158 - 1/3 - N56°49'10"W

APPROVED  
 Date 8-27-63  
 By William Ruden  
 City Engineer  
 See Res. 61-126

This map correctly represents a survey made by me or under my direction at the request of E.J. Albright in July-1963

N.P. Browne  
 N.P. Browne L.S. 1162

LOT 5 - RANCHO GUAJOME  
 R.O.F.S. 5158