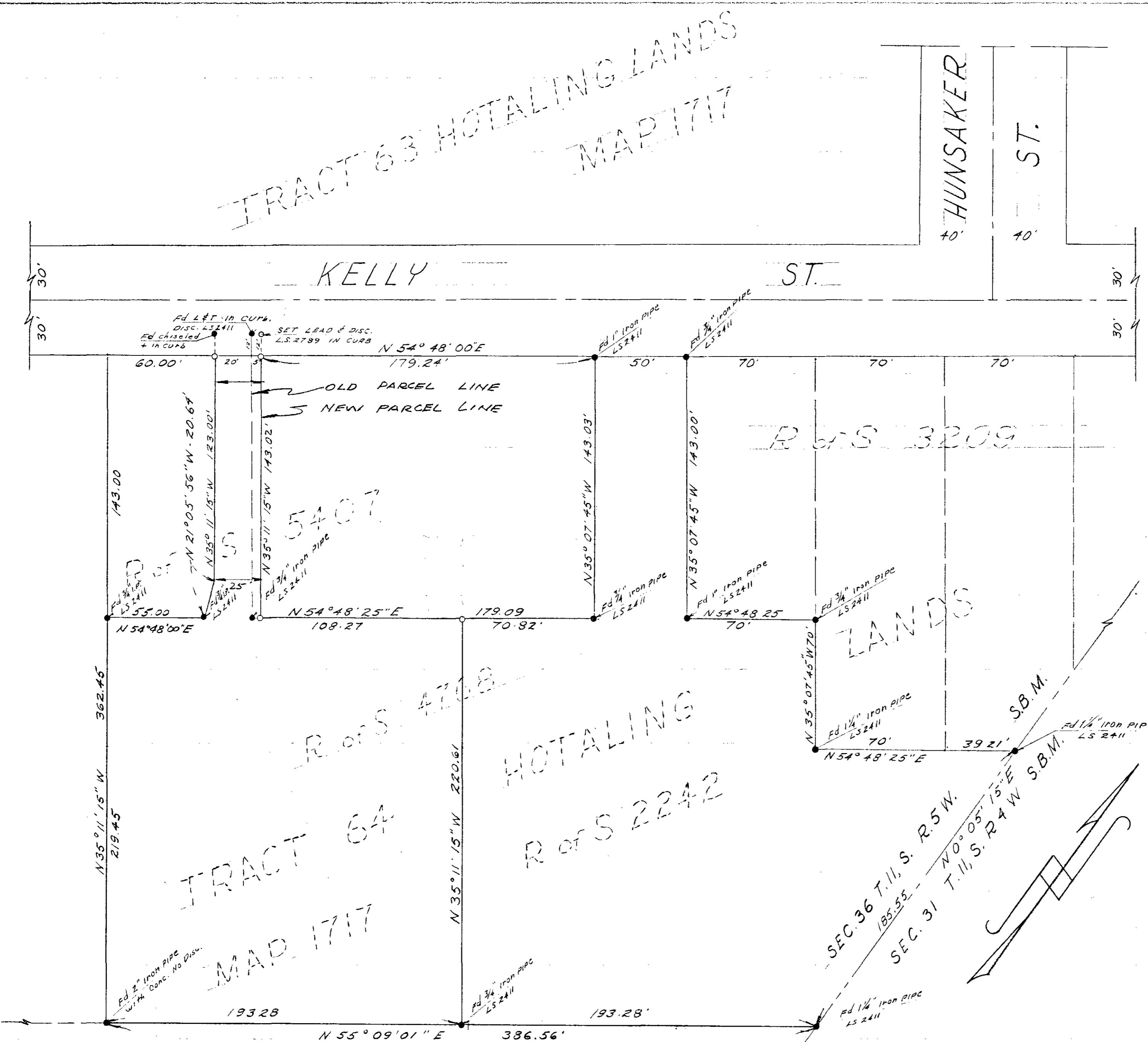


SPLIT LOT SURVEY
OF PORTION R of S 4768
TRACT 64 OCEANSIDE
MAP 1717, OCEANSIDE, CALIF.

NOTE:
This Lot Split Map is for the purpose of changing from 20' to 25', the strip of land to Kelly St. in a portion of R of S 5407.



NOTE:
CORNER MONUMENTS AS INDICATED WILL BE SET BY ME WITHIN 30 DAYS FROM THE DATE OF APPROVAL OF THIS MAP BY THE CITY OF OCEANSIDE
Gustav J. Kamptner
GUSTAV J. KAMPTNER LS. 2789

BASIS OF BEARINGS.
THE BEARING OF THE SOUTH WEST BOUNDARY OF R. OF S 4768 SHOWN ON R OF S 4768 AS N 35° 11' 15" W WAS USED AS BASIS OF BEARINGS FOR THIS SURVEY.

THIS MAP CORRECTLY REPRESENTS A SURVEY MADE BY ME IN CONFORMANCE WITH THE REQUIREMENTS OF CHAPTER 15, DIVISION 3 OF THE BUSINESS & PROFESSIONS CODE AT THE REQUEST OF MRS. ROY McINTOSH IN JUNE, 1963

Gustav J. Kamptner
GUSTAV J. KAMPTNER LS 2789

APPROVED
Alton Z. Ruden
OCEANSIDE CITY ENGINEER
A.L. RUDEN R.C.E 10183

LOT SPLIT

PREPARED FOR:
MRS. ROY McINTOSH
1601 KELLY STREET

LEGEND

- INDICATES MONUMENTS FOUND ACCORDING TO R of S 5407 & R of S 4768
- INDICATES SET 3/4" IRON PIPE & DISC. LS. 2789

DRAWN <i>H. Curtis</i>	DATE 6-6-63
CHECKED <i>GJK</i>	SCALE 1" = 40'
APPROVED	SHEET 1 OF 1