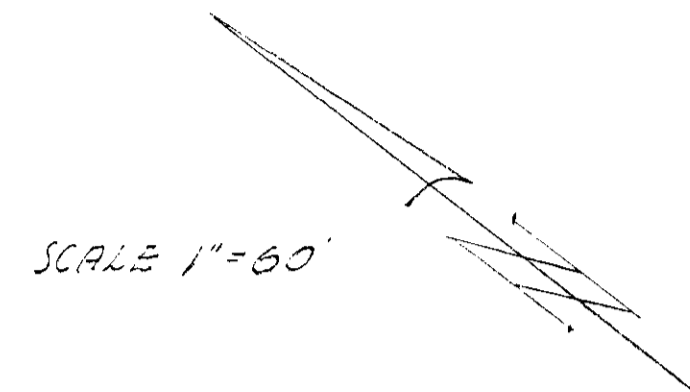
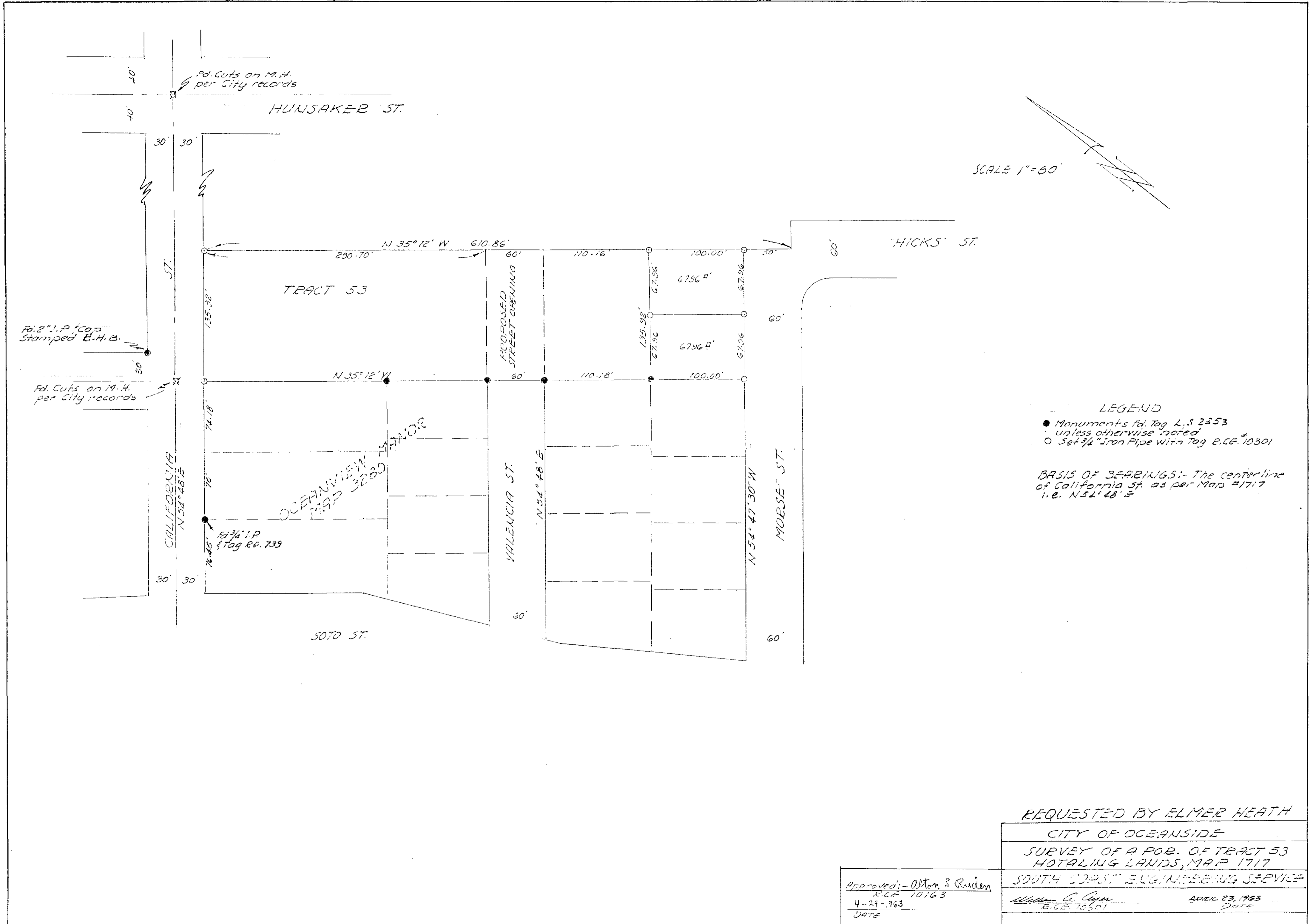


SPLIT LOT MAP # 335



LEGEND

- Monuments fd. Tag L.S. 2353 unless otherwise noted
- Set 3/4" Iron Pipe with Tag E.C.E. #10301

BASIS OF BEARINGS: - The centerline of California St. as per Map #1717 i.e. N 54° 48' E

REQUESTED BY ELMER HEATH	
CITY OF OCEANSIDE	
SURVEY OF A PORT. OF TRACT 53	
HOTELING LANDS, MAP 1717	
SOUTH COAST ENGINEERING SERVICE	
Approved: - Alton S. Ruden E.C.E. 10163 4-24-1963 DATE	William A. Allen E.C.E. 10301 APRIL 23, 1963 DATE