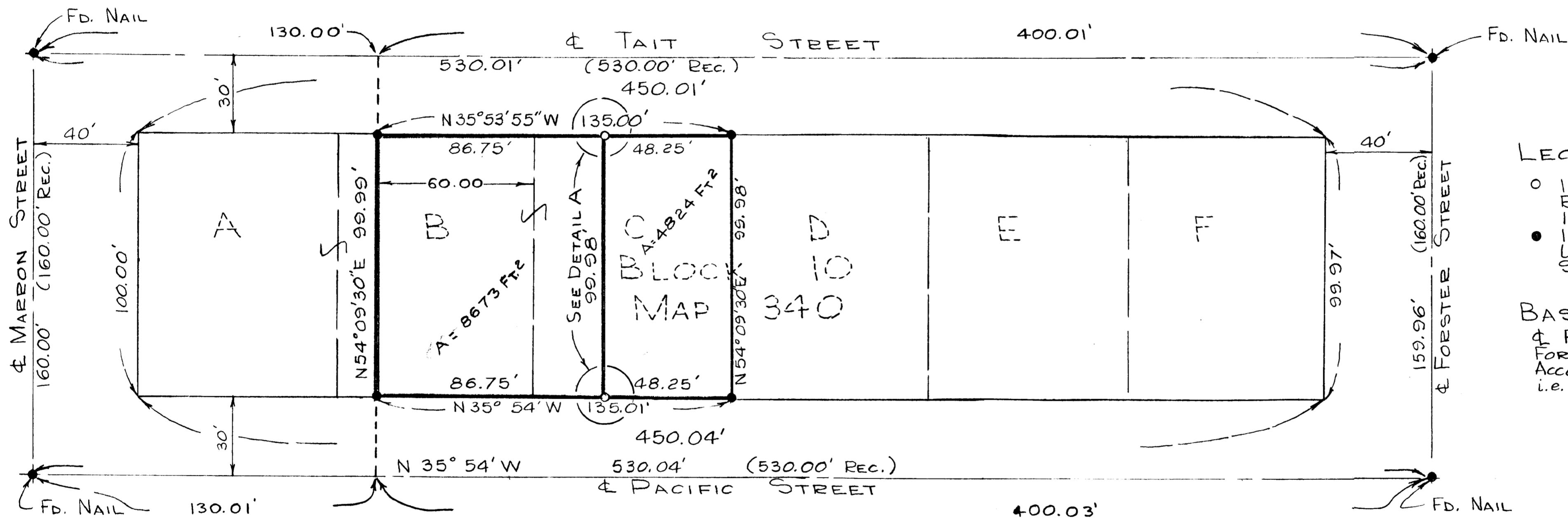


A SURVEY OF ALL OF LOT "C" AND THE SOUTHERLY 60 FEET OF LOT "B" IN BLOCK 10 OF MYERS ADDITION, IN THE CITY OF OCEANSIDE, COUNTY OF SAN DIEGO, STATE OF CALIFORNIA, ACCORDING TO MAP 340.

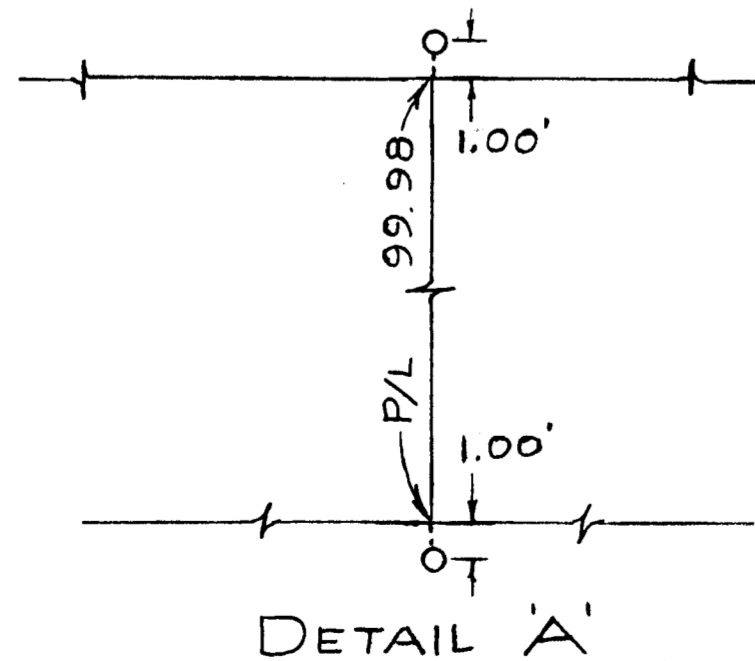
SCALE 1" = 30'



LEGEND:

- INDICATES SET TAG RCE 7604 IN SIDE WALK 1-FOOT OFF P/L.
- INDICATES FOUND L. & T. UNLESS OTHERWISE SHOWN. 1-FOOT OFF P/L

BASIS OF BEARING:
 ☉ PACIFIC STREET BETWEEN FORSTER ST. & MARRON ST. ACCORDING TO CITY RECORDS, I.E. N 35° 54' W.



APPROVED
 Altamir & Pridem 6-17-1963
 A.L. RUDEN RCE 10163 CITY ENGR.

PROPERTY SURVEY		
FOR		
ACHILLES LA BLANC		
OCEANSIDE CALIFORNIA		
DRAWN: EBS.	DRESSSELHAUS ENGINEERS	DATE: 4-8-63
CHECKED: [Signature]	DONALD F. DRESSSELHAUS RCE 7604	SCALE: 1" = 30'
APPROVED: [Signature]	528 So. Hill St. OCEANSIDE, CALIF. PH. 722-2126	SHEET 1 OF 1