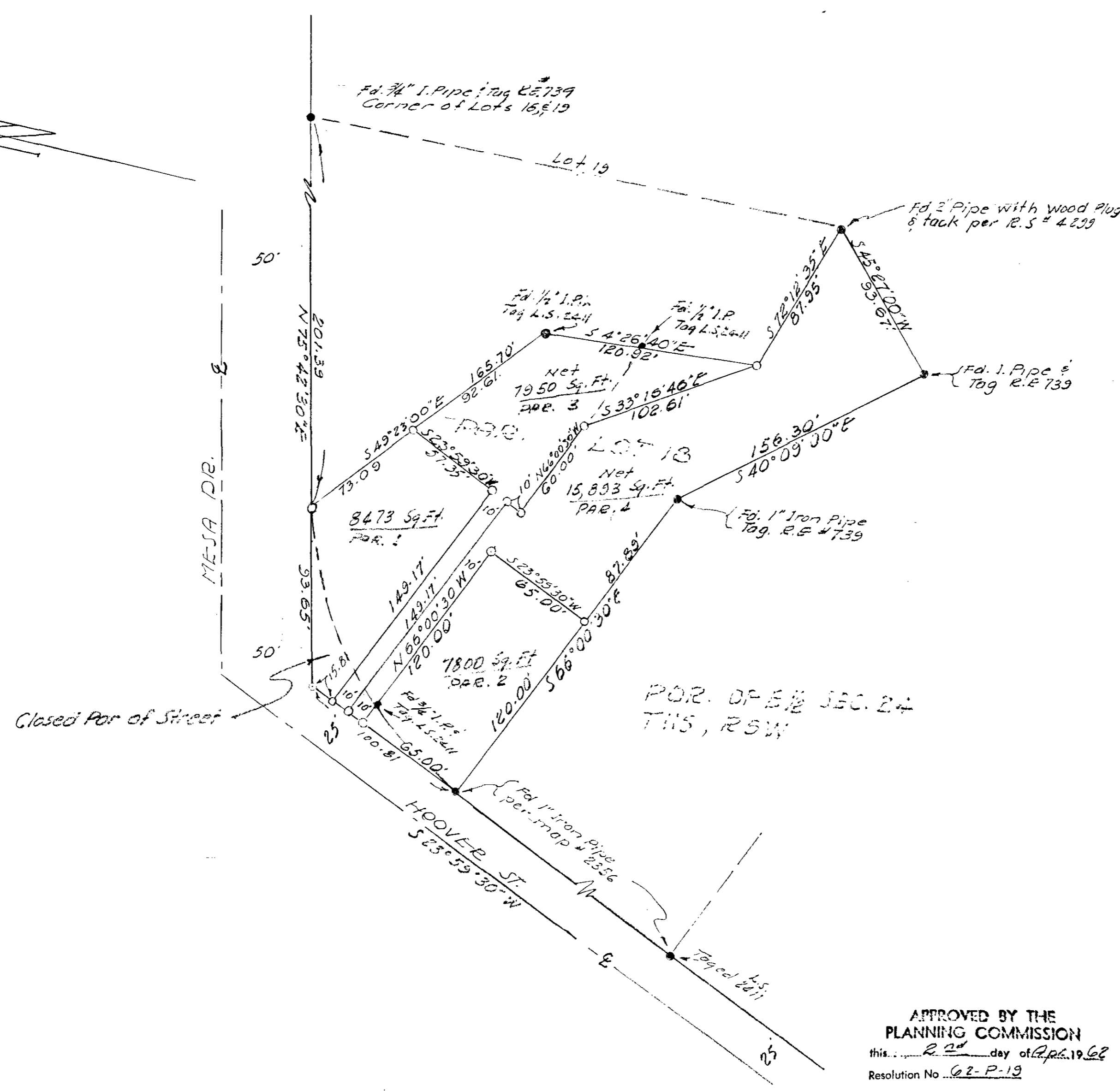
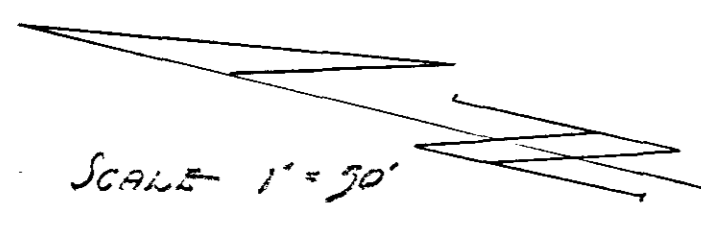


SPLIT LOT MAP N^o 330



LEGEND
 • Monuments set as indicated
 o Set 1" Iron Pipe Tag RCE 10301

 BASIS OF BEARINGS: - The centerline of Hoover Street
 i.e. S 23° 59' 30" W

APPROVED BY THE
 PLANNING COMMISSION
 this 2nd day of April 1962
 Resolution No. 62-P-19

Secretary *[Signature]*

REQUESTED BY V. OWENS
 CITY OF OCEANSIDE
 SURVEY OF A PORTION OF LOT
 18, ELLERY HTS. ADD. MAP 2356
 SOUTH COAST ENGINEERING SERVICE
 William A. Cuyler MARCH 29, 1963.
 W.A. CUYLER - RCE 10301. DATE

Approved - *[Signature]*
 RCE 10301
 4-1-63
 DATE