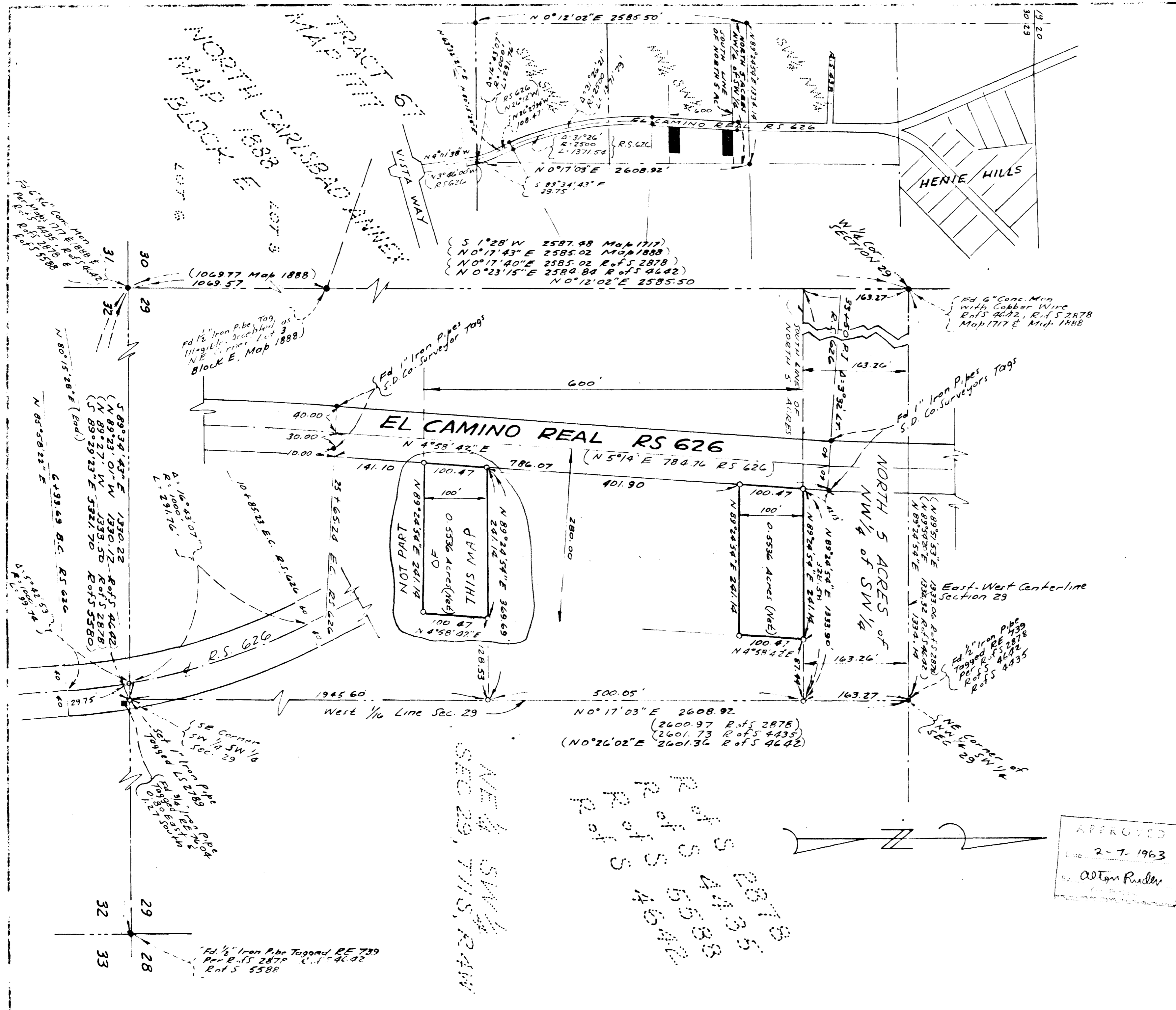


RECORD OF SURVEY  
 OF A PORTION OF THE  
 NW 1/4 OF THE SW 1/4  
 AND THE SW 1/4 OF THE SW 1/4  
 SECTION 29 T11S R4W  
 SBM, OCEANSIDE, CALIFORNIA



**LEGEND**

- INDICATES SET 1" IRON PIPES TAGGED LS 2789.
- INDICATES FOUND MONUMENTS AS NOTED ACCORDING TO RECORD.
- INDICATES FOUND MONUMENTS NOT ACCORDING TO RECORD.

SCALE: 1" = 100'

THE BASIS OF BEARING FOR THIS SURVEY IS NORTH-SOUTH CENTERLINE OF THE SOUTHWEST QUARTER SECTION 29, TOWNSHIP 11 SOUTH, RANGE 4 WEST SBM AS SHOWN ON R of S MAP 2878 I.E. N 0°17'03" E

THIS MAP CORRECTLY REPRESENTS A SURVEY MADE BY ME UNDER MY DIRECTION IN CONFORMANCE WITH THE REQUIREMENTS OF CHAPTER 15 OF DIVISION 3 OF THE BUSINESS AND PROFESSIONS CODE AT THE REQUEST OF **JAMES B. WILLIAMS ED BACKUS**

MAY 19 62  
**Gustav J. Kamptner**  
 L.S. 2789

THIS MAP HAS BEEN EXAMINED FOR CONFORMANCE WITH THE REQUIREMENTS OF CHAPTER 15 OF DIVISION 3 OF THE BUSINESS AND PROFESSIONS CODE THIS DAY OF \_\_\_\_\_ BY OF \_\_\_\_\_  
**D.K. SPEER**  
 COUNTY SURVEYOR

APPROVED  
 Date 2-7-1963  
 by **Adrian Ruder**

FILE NO. \_\_\_\_\_  
 FILED FOR RECORD THIS \_\_\_\_\_ DAY OF \_\_\_\_\_ 19\_\_\_\_  
 AT \_\_\_\_\_ O'CLOCK \_\_\_\_\_ M. IN ROOM \_\_\_\_\_ OF \_\_\_\_\_  
 AT THE REQUEST OF **GUSTAV J. KAMPTNER**  
 FEE \$ 5.00

**A.S. GRAY**  
 COUNTY RECORDER

R of S 4435  
 R of S 4642  
 R of S 4642  
 R of S 4642  
 R of S 4642