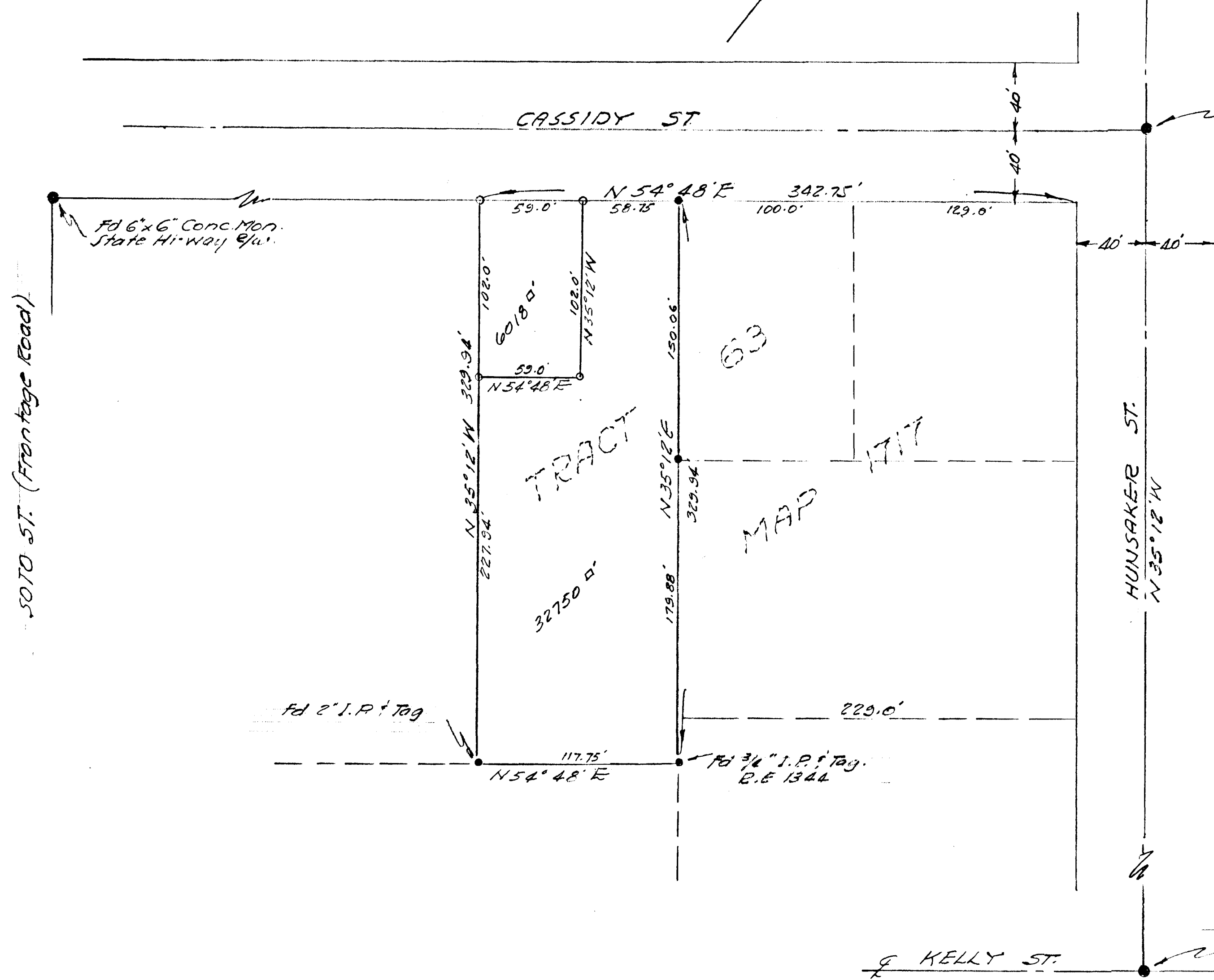
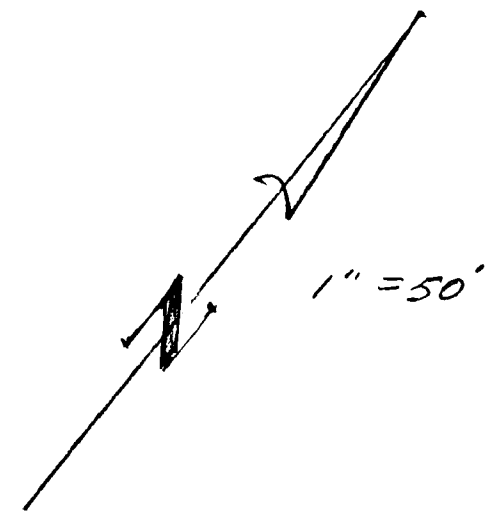


SPLIT LOT MAP N° 326



LEGEND
 ○ Set 1" Iron Pipe Tag R.C.E. #10301
 ● Monuments fd as indicated.

BASIS OF BEARINGS
 & Hunsaker St as shown on Map 1717
 i.e. N 35° 12' W.

APPROVED BY THE PLANNING COMMISSION
 this 19th day of Feb., 1963
 Resolution No. 62 P-31
 Secretary *[Signature]*

SOTO ST. (Franchise Road)

APPROVED
 Date 2-4-63
 By Alton Rudeen
 City Engineer

REQUESTED BY J. IMBILLI
 CITY OF OCEANSIDE
 SURVEY OF A PORTION TR. 63
 HOTELING LANDS MAP 1717
 SOUTH COAST ENGINEERING SERVICE
 William G. Cypri... FEBRUARY 1, 1963
 R.C.E. 1230 DATE