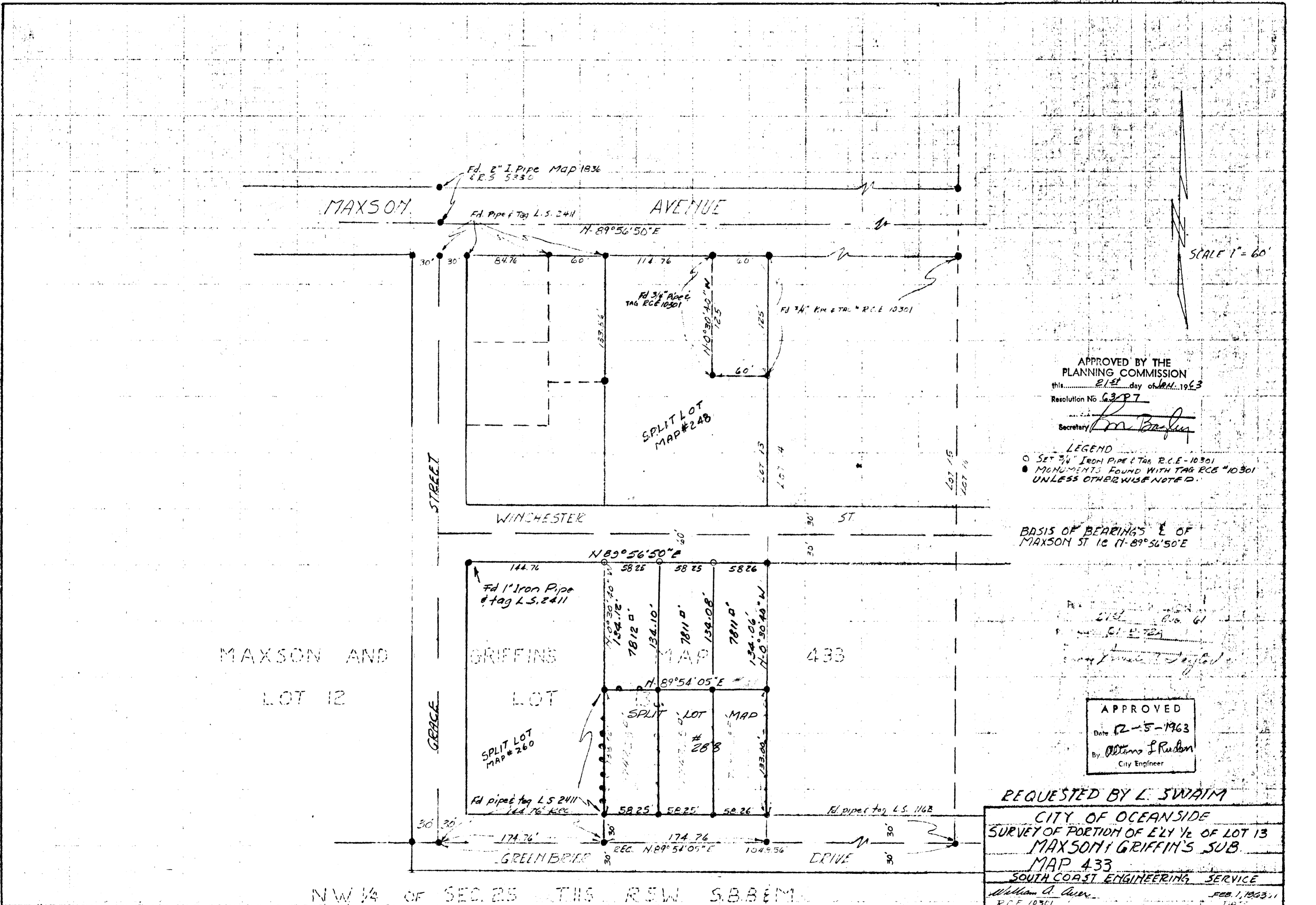


SPLIT LOT MAP NO 325



SCALE 1" = 60'

APPROVED BY THE
PLANNING COMMISSION
this 21st day of JAN. 1963
Resolution No. 6397
Secretary *[Signature]*

LEGEND
○ SET 3/4" IRON PIPE & TAG R.C.E. - 10301
● MONUMENTS FOUND WITH TAG R.C.E. #10301
UNLESS OTHERWISE NOTED.

BASIS OF BEARINGS E OF
MAXSON ST IS N 89° 56' 50" E

APPROVED
Date 12-5-1963
By *William J. Rudson*
City Engineer

REQUESTED BY L. SWAIM
CITY OF OCEANSIDE
SURVEY OF PORTION OF ELY 1/2 OF LOT 13
MAXSON GRIFFIN'S SUB.
MAP 433
SOUTH COAST ENGINEERING SERVICE
William A. Allen FEB. 1, 1963
R.C.E. 10301

NW 1/4 OF SEC. 25 THIS RES. SUB. BEING

LS-325
63-P7 - Jan 21st *[Signature]* 15-A