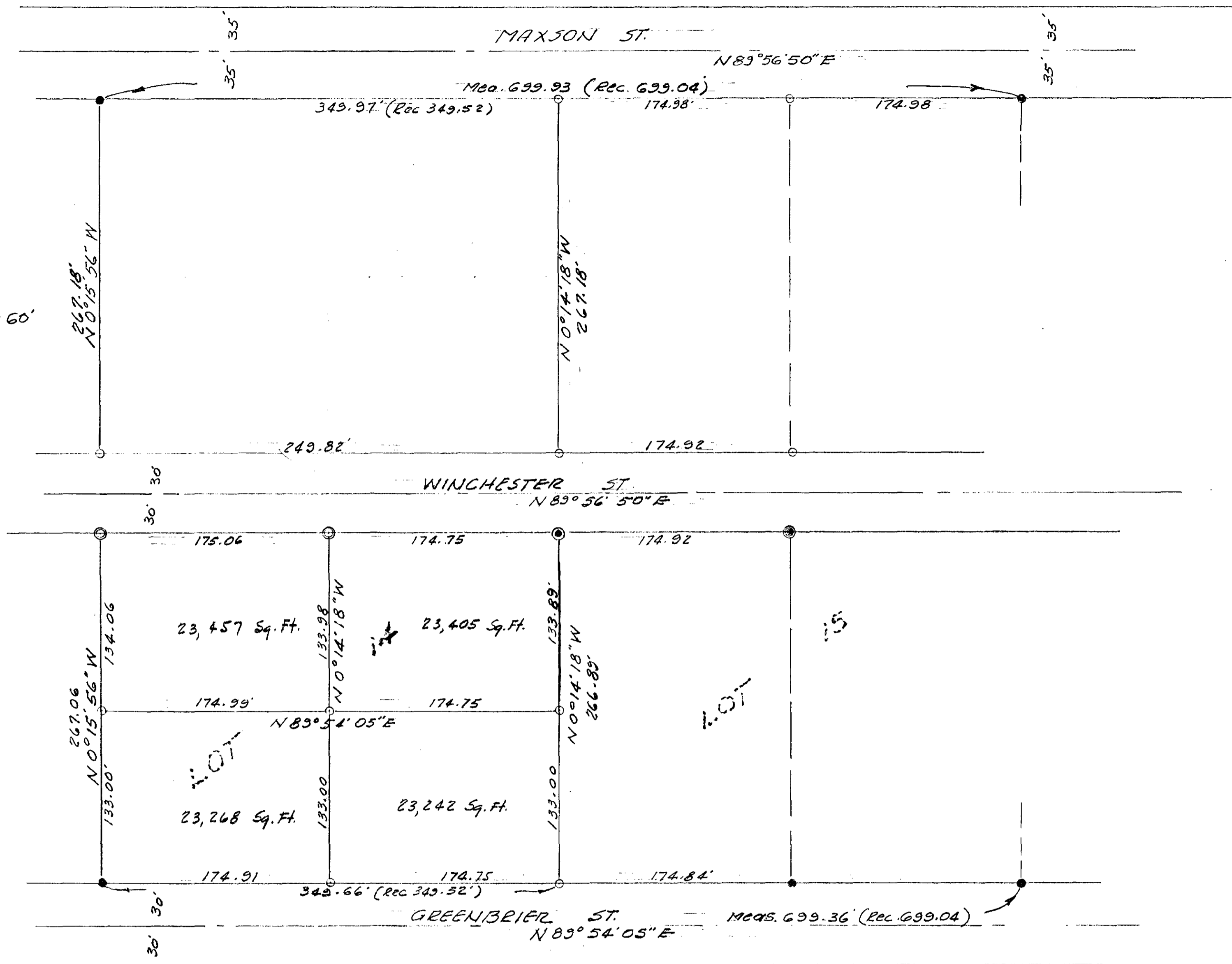
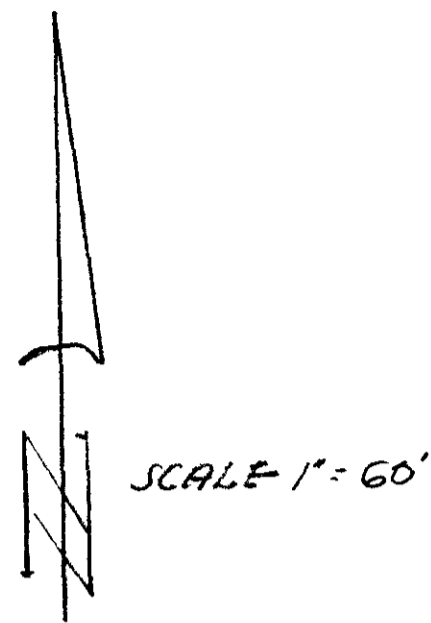


SPLIT LOT MAP #321



- LEGEND
- 3/4" Iron Pipe Set with tag E.C.E. 10301
 - Monuments Fd. with tag E.C.E. 10301
 - ⊙ Lead Plug " " " "
 - ⊙ " " Set " " " "

BASIS OF BEARINGS:- The centerline of Winchester St. i.e. $N 89^{\circ} 56' 50'' E$

CITY OF OCEANSIDE	
SURVEY OF A PORTION OF LOT 14 MAXSON & GRIFFIN'S SUB.	
MAP 433	
REQUESTED BY ELMER PETERS	
SOUTH COAST ENGINEERING SERVICE	
Approved <u>Olton & Ruden</u> Alton L. Ruden E.C.E. 10163	W.A. PETER E.C.E. 10301
12-10-1964 DATE	MARCH 29, 1963 L.P.T.#