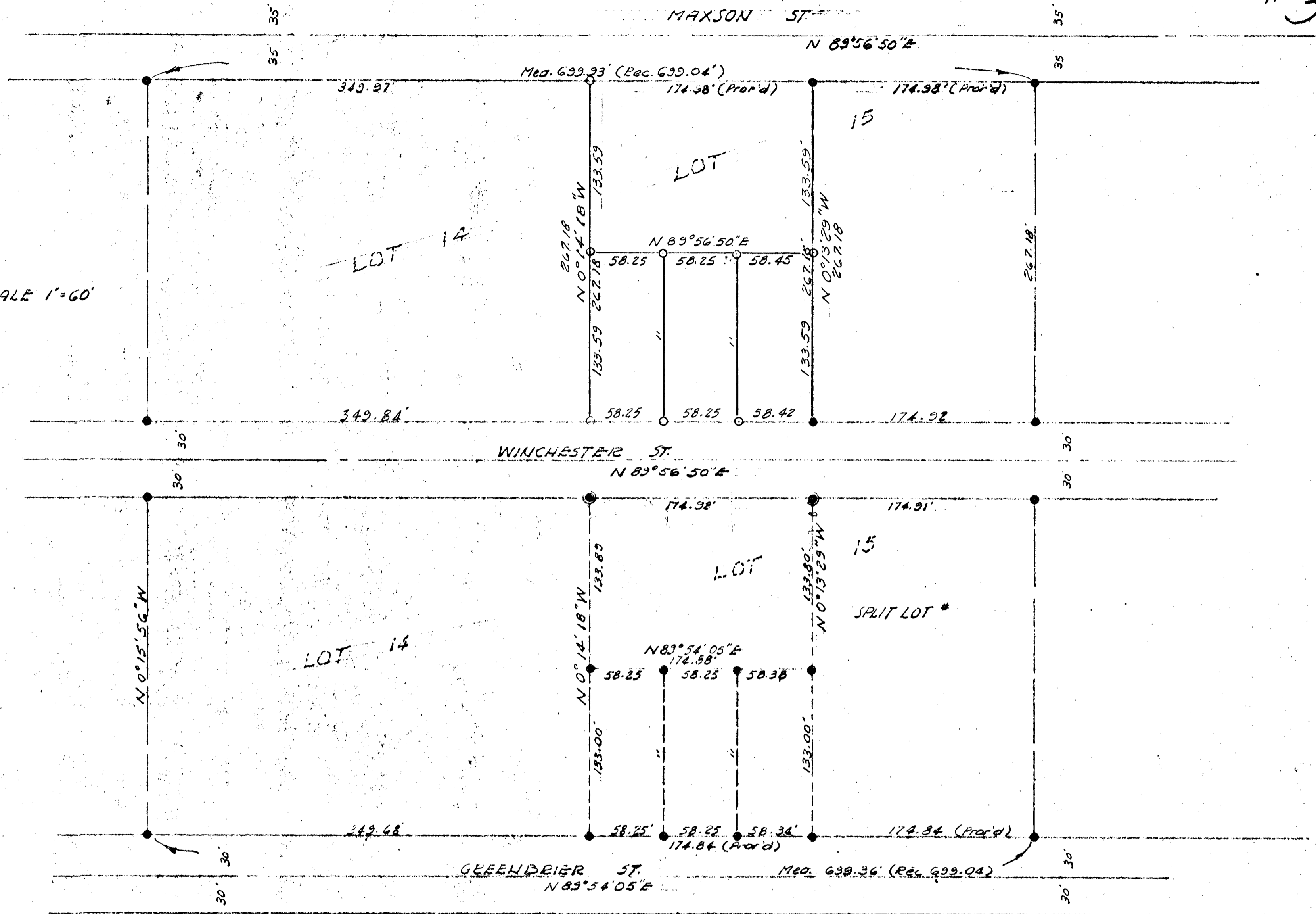


# SPLIT LOT MAP # 319



SCALE 1"=60'



- LEGEND**
- 3/4" Iron Pipe Set with tag R.C.E. 10301
  - Monuments Fed. with tag R.C.E. 10301
  - Lead Plug
  - " " Set " " " "

**BASIS OF BEARINGS** - The centerline of Winchester St. i.e. N 89°56'50"E

APPROVED BY THE PLANNING COMMISSION  
this 17<sup>th</sup> day of Sep., 1962  
Resolution No. 62-P-60

APPROVED BY THE PLANNING COMMISSION  
this \_\_\_\_\_ day of \_\_\_\_\_, 19\_\_\_\_  
Resolution No. \_\_\_\_\_

Secretary *Mr. Baerly*

Secretary *Mr. Baerly*

**CITY OF OCEANSIDE**  
SURVEY OF A PORTION OF  
LOT 15 MAXSON & GRIFFIN'S SUB.

Approved: *Oliver R. Euden*  
Alton L. Euden  
R.C.E. 10163  
1-8-63  
LATE

**MAP 433**  
REQUESTED BY *J. BLACKBURN*  
**SOUTH COAST ENGINEERING SERVICE**  
*William G. Auer*  
W.R. 9762 R.C.E. 10301  
JAN 7, 1963  
DATE