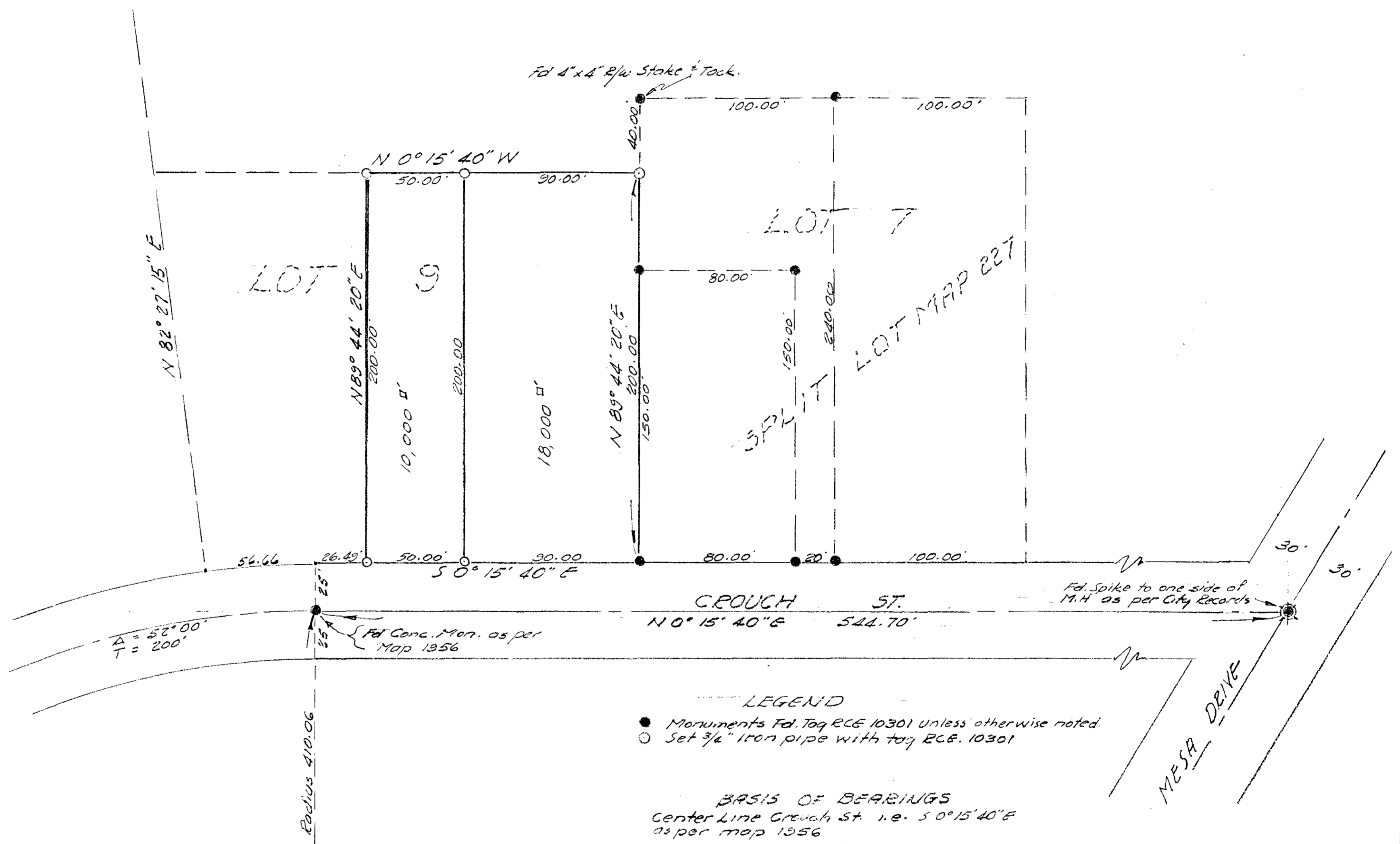
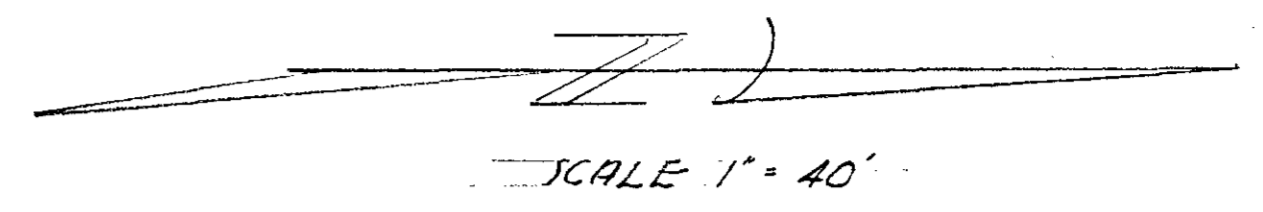


LOT SPLIT MAP 317



LEGEND

- Monuments Fd. Tag R.C.E. 10301 Unless otherwise noted.
- Set 3/4" Iron pipe with tag R.C.E. 10301

BASIS OF BEARINGS
Center Line Crouch St. i.e. S 0° 15' 40" E
as per map 1956

SURVEY REQUESTED BY PAUL W. HANSON
131 Crouch St. Oceanside, Calif.

APPROVED BY CITY COUNCIL
OVERRIDE BY RES. NO 61-101
AUGUST 23, 1961

DENIED
BY THE
PLANNING COMMISSION
19th JUNE 1961
Resolution No. 61-P50
Secretary

Approved: Alton & Ruben
A.L. Ruben R.C.E. 10163
10-24-62
DATE

CITY OF OCEANSIDE	
SURVEY OF A PORTION OF LOT 9, BLK. "B" MAP 1956	
ELLERY'S LOMA ALTA ADD.	
SOUTH COAST ENGINEERING SERV.	
William A. Ayer R.C.E. No 10301	MAY 7, 1962 DATE