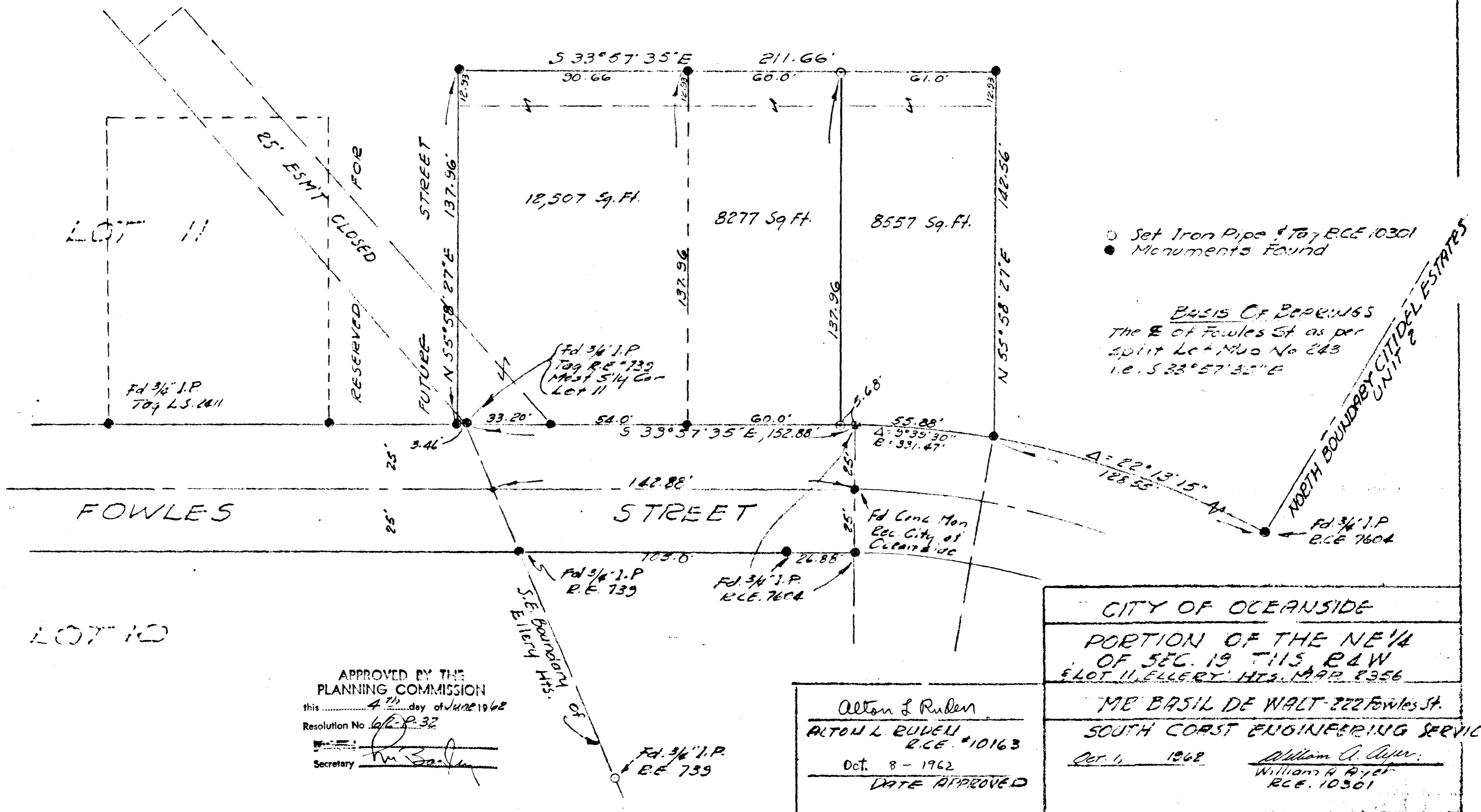
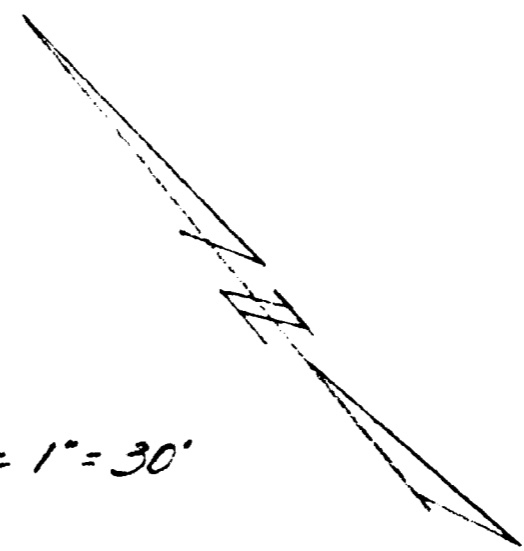


# SPLIT LOT MAP #315

FOR THE NE 1/4  
 SEC. 19  
 T11S, R44W

SCALE 1" = 30'



- Set Iron Pipe & Tag R.C.E. 10301
- Monuments Found

BASIS OF BEARINGS  
 The E of Fowles St as per  
 split Lot Map No 243  
 i.e. S 33° 57' 35\"/>

NORTH BOUNDARY  
 CITY OF OCEANSIDE  
 UNIT 2 ESTATES

APPROVED BY THE  
 PLANNING COMMISSION  
 this 4<sup>th</sup> day of June 1962  
 Resolution No. 62-32  
 Secretary *[Signature]*

Alton L. Ruden  
 ALTON L. RUDEN  
 R.C.E. #10163  
 Oct. 8 - 1962  
 DATE APPROVED

CITY OF OCEANSIDE  
 PORTION OF THE NE 1/4  
 OF SEC. 19 T11S, R44W  
 & LOT 11, ELLERY HTS. MAP 2356  
 MR. BASIL DE WALT 222 Fowles St.  
 SOUTH COAST ENGINEERING SERVICE  
 Oct. 6, 1962 *[Signature]*  
 William R. Ryer  
 R.C.E. 10301