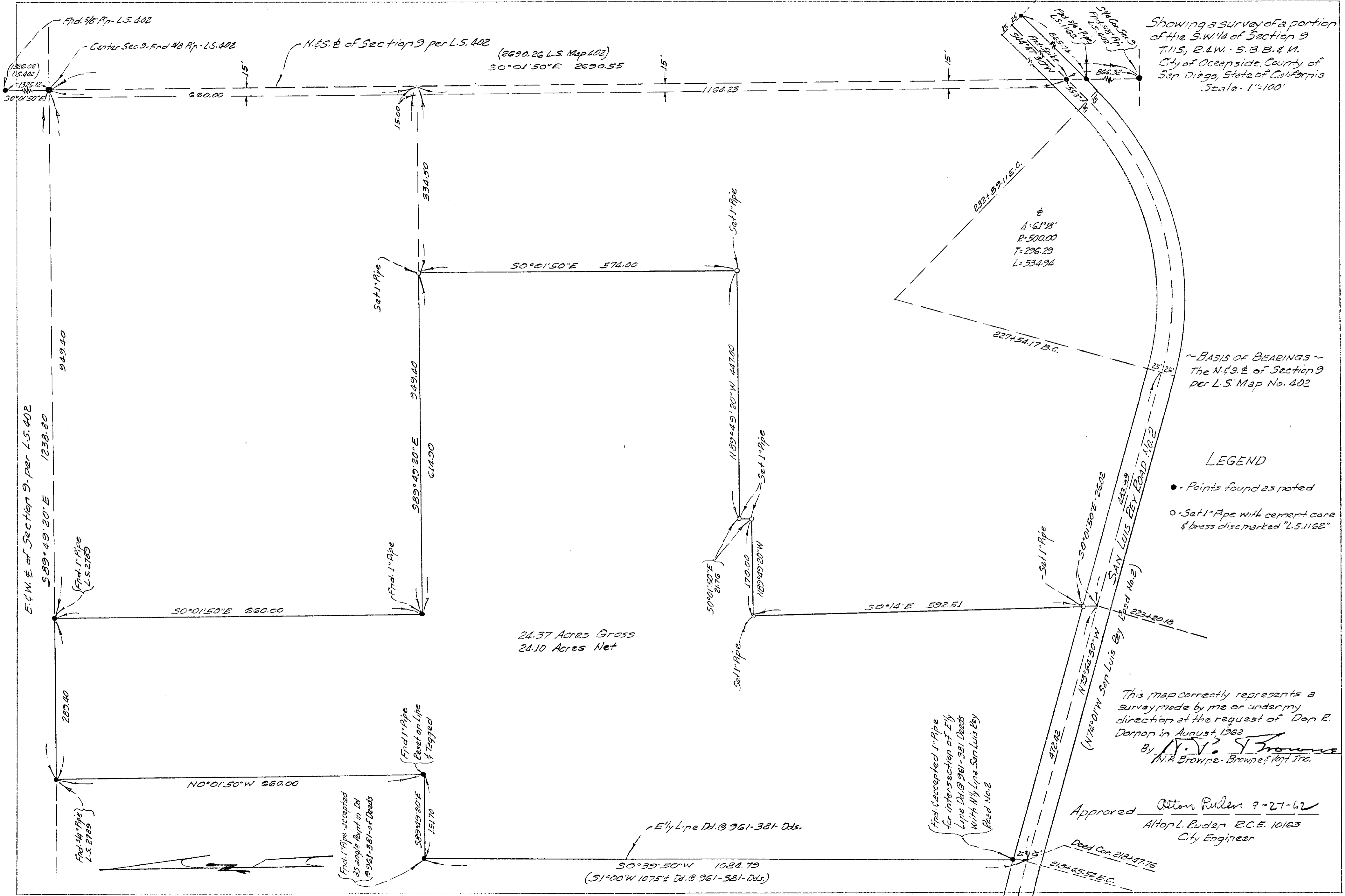


LOT SPLIT MAP No 314



Showing a survey of a portion of the S.W. 1/4 of Section 9 T.11S, R.24W, S.B.B. & M. City of Oceanside, County of San Diego, State of California Scale - 1"=100'

24.37 Acres Gross
24.10 Acres Net

~BASIS OF BEARINGS~
The N. 1/2 S. 1/4 E. of Section 9 per L.S. Map No. 402

LEGEND

- Points found as noted
- Set 1" Pipe with cement core & brass disc marked "L.S. 1162"

This map correctly represents a survey made by me or under my direction at the request of Don E. Darnon in August, 1962
By N. P. Browne
N. P. Browne & Browne's, Inc.

Approved Alton Rulien 9-27-62
Attop L. Ruden R.C.E. 10163
City Engineer