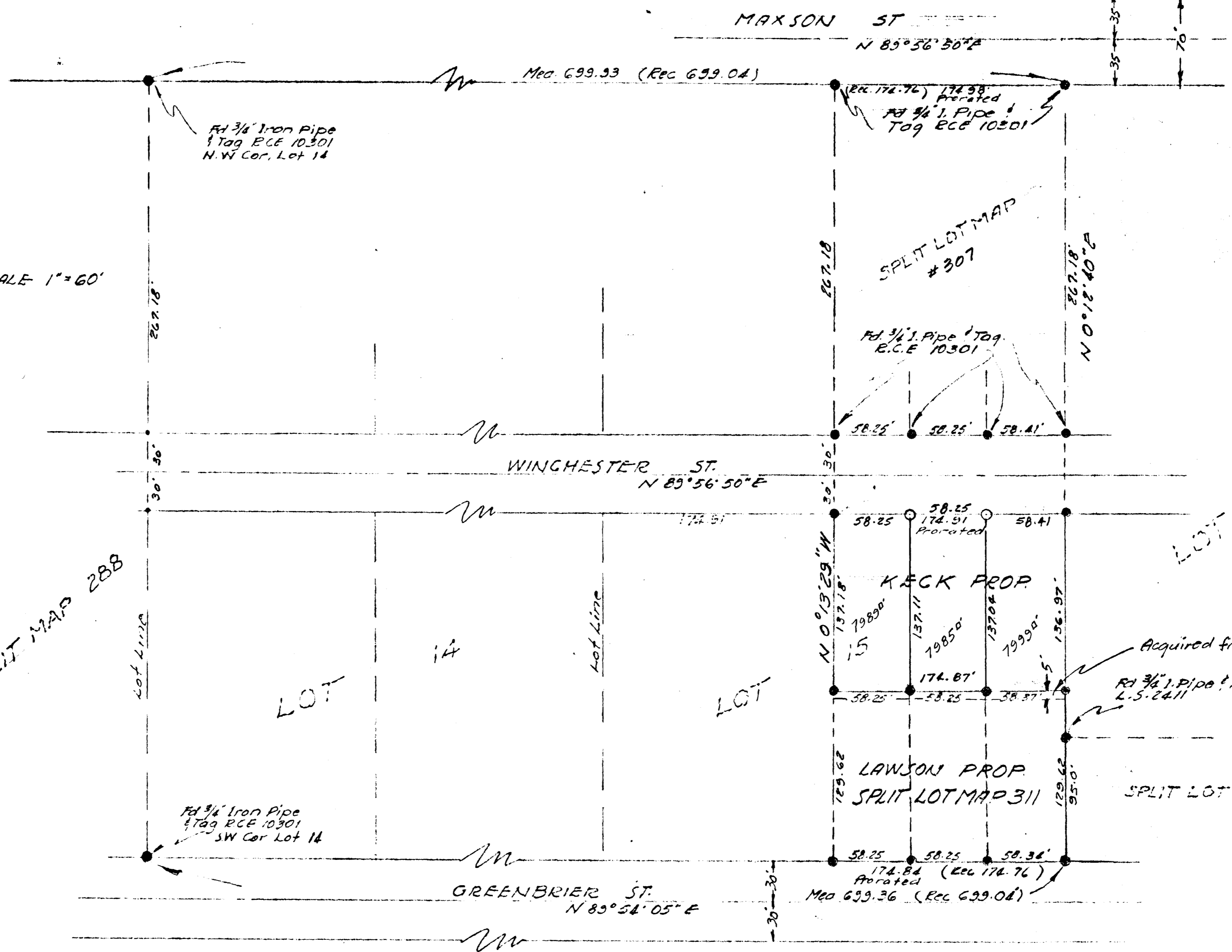


SPLIT LOT MAP #312



SCALE 1" = 60'

LOT SPLIT MAP 288



- LEGEND**
- Monuments Found Tag R.C.E. 10301 or otherwise noted
 - 3/4" Iron Pipe set Tag R.C.E. 10301

BASIS OF BEARINGS: The centerline of Winchester St. i.e. N 89° 56' 50" E

APPROVED BY THE PLANNING COMMISSION
 this 4th day of June 1962
 Resolution No. 62 P-29
 Secretary *David A. Taylor*

Approved: *Alton Ruler*
 Alton L. Ruler
 R.C.E. 10163
 Sept. 12, 1962
 DATE

CITY OF OCEANSIDE	
SURVEY OF A PORTION OF LOT 15 MAXSON & GRIFFIN'S SUB	
MAP 433 REQUESTED BY KEN LAWSON	
SOUTH COAST ENGINEERING SERVICE	
<i>W. A. Ayer</i>	August 20, 1962 DATE
W.A. AYER R.C.E. 10301	