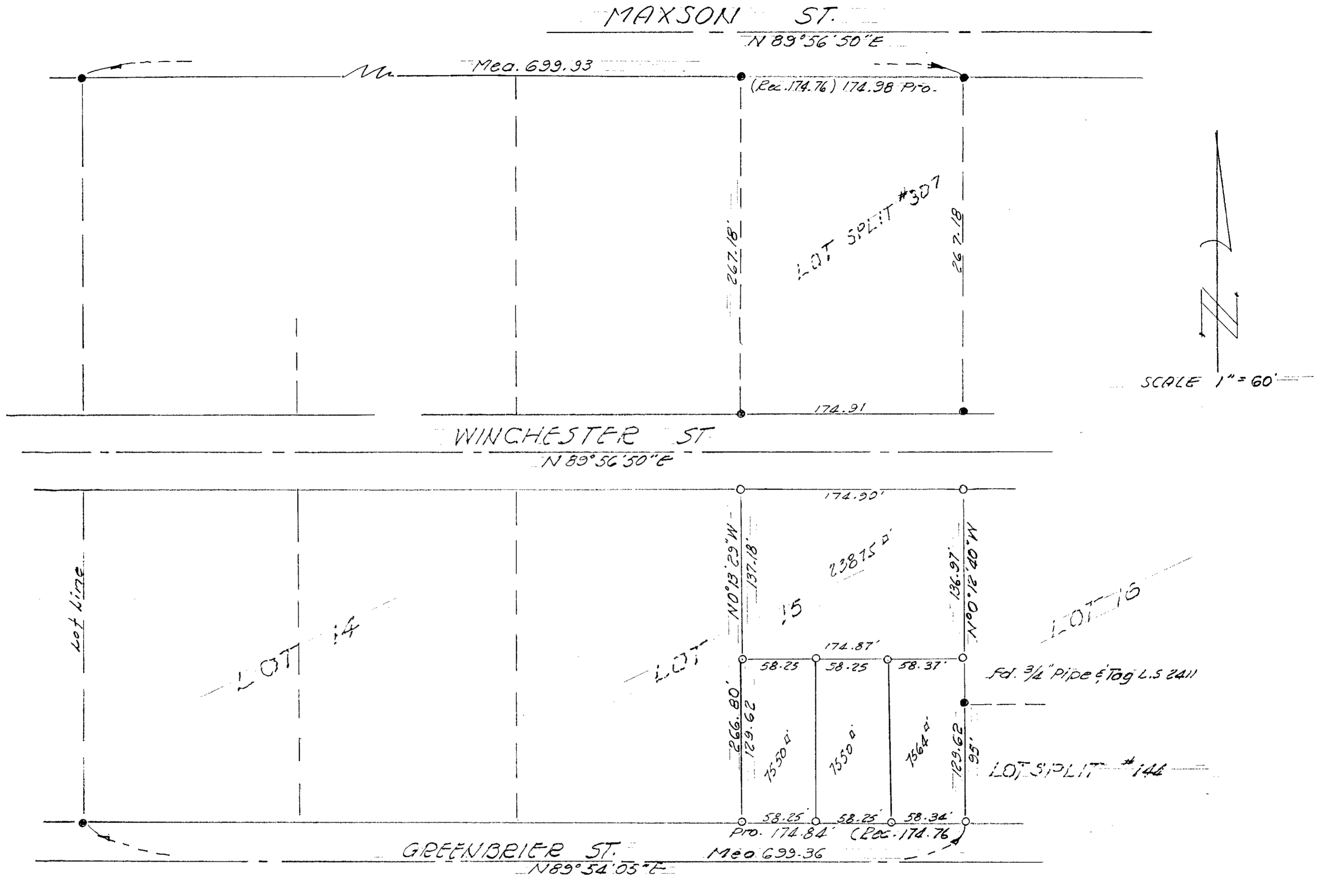


SPLIT LOT MAP NO 311



LEGEND
 • Fd 3/4" Iron Pipe & Tag RCE #10301
 o Set " " " " " " " " " " " "

BASIS OF BEARINGS: - The centerline of Winchester St. is N 89° 56' 50" E

APPROVED BY THE PLANNING COMMISSION
 this 17th day of Sept. 62
 Resolution No. 12-PS7
 Secretary: *Rm Bayly*

Approved: *Allen E. Ruden*
 Allen E. Ruden
 RCE 10301
 Date: Sept 1, 1963

CITY OF OCEANSIDE
 SURVEY OF A PORTION OF LOT 15 MAXSON & GREENBRIER'S
 MAP 433
 REQUESTED BY BUILDER'S INC.
 SOUTH COAST ENGINEERING SERVICE
W. Ayer
 W. A. AYER RCE 10301
 August 20, 1962
 DATE