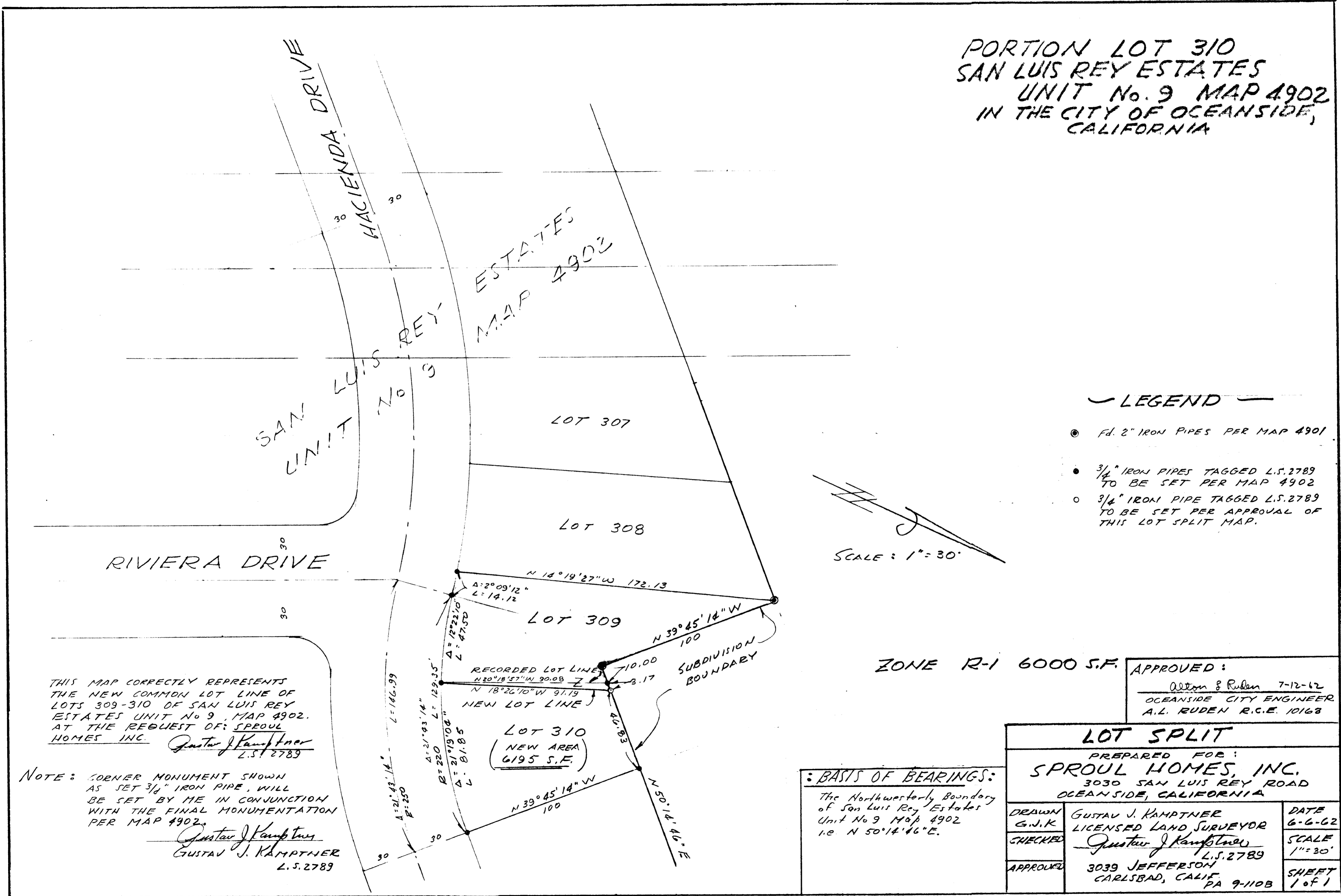


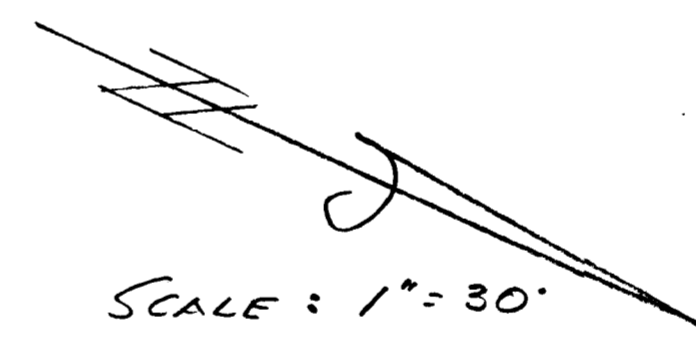
# SPLIT LOT SURVEY MAP No. 308

PORTION LOT 310  
SAN LUIS REY ESTATES  
UNIT No. 9 MAP 4902  
IN THE CITY OF OCEANSIDE,  
CALIFORNIA



### LEGEND

- Fd. 2" IRON PIPES PER MAP 4901
- 3/4" IRON PIPES TAGGED L.S. 2789 TO BE SET PER MAP 4902
- 3/4" IRON PIPE TAGGED L.S. 2789 TO BE SET PER APPROVAL OF THIS LOT SPLIT MAP.



ZONE R-1 6000 S.F.

APPROVED:  
Alton & Ruden 7-12-62  
OCEANSIDE CITY ENGINEER  
A.L. RUDEN R.C.E. 10163

THIS MAP CORRECTLY REPRESENTS THE NEW COMMON LOT LINE OF LOTS 309-310 OF SAN LUIS REY ESTATES UNIT No. 9, MAP 4902. AT THE REQUEST OF: SPROUL HOMES INC.  
Gustav J. Kamptner  
L.S. 2789

NOTE: CORNER MONUMENT SHOWN AS SET 3/8" IRON PIPE, WILL BE SET BY ME IN CONJUNCTION WITH THE FINAL MONUMENTATION PER MAP 4902.  
Gustav J. Kamptner  
GUSTAV J. KAMPTNER  
L.S. 2789

**BASIS OF BEARINGS:**  
The Northwesterly Boundary of San Luis Rey Estates Unit No. 9 Map 4902 i.e. N 50° 14' 46" E.

LOT SPLIT		
PREPARED FOR: <b>SPROUL HOMES, INC.</b> 3030 SAN LUIS REY ROAD OCEANSIDE, CALIFORNIA		
DRAWN G.J.K.	GUSTAV J. KAMPTNER LICENSED LAND SURVEYOR	DATE 6-6-62
CHECKED	<u>Gustav J. Kamptner</u> L.S. 2789	SCALE 1" = 30'
APPROVED	3039 JEFFERSON CARLSBAD, CALIF. PA 9-110B	SHEET 1 of 1