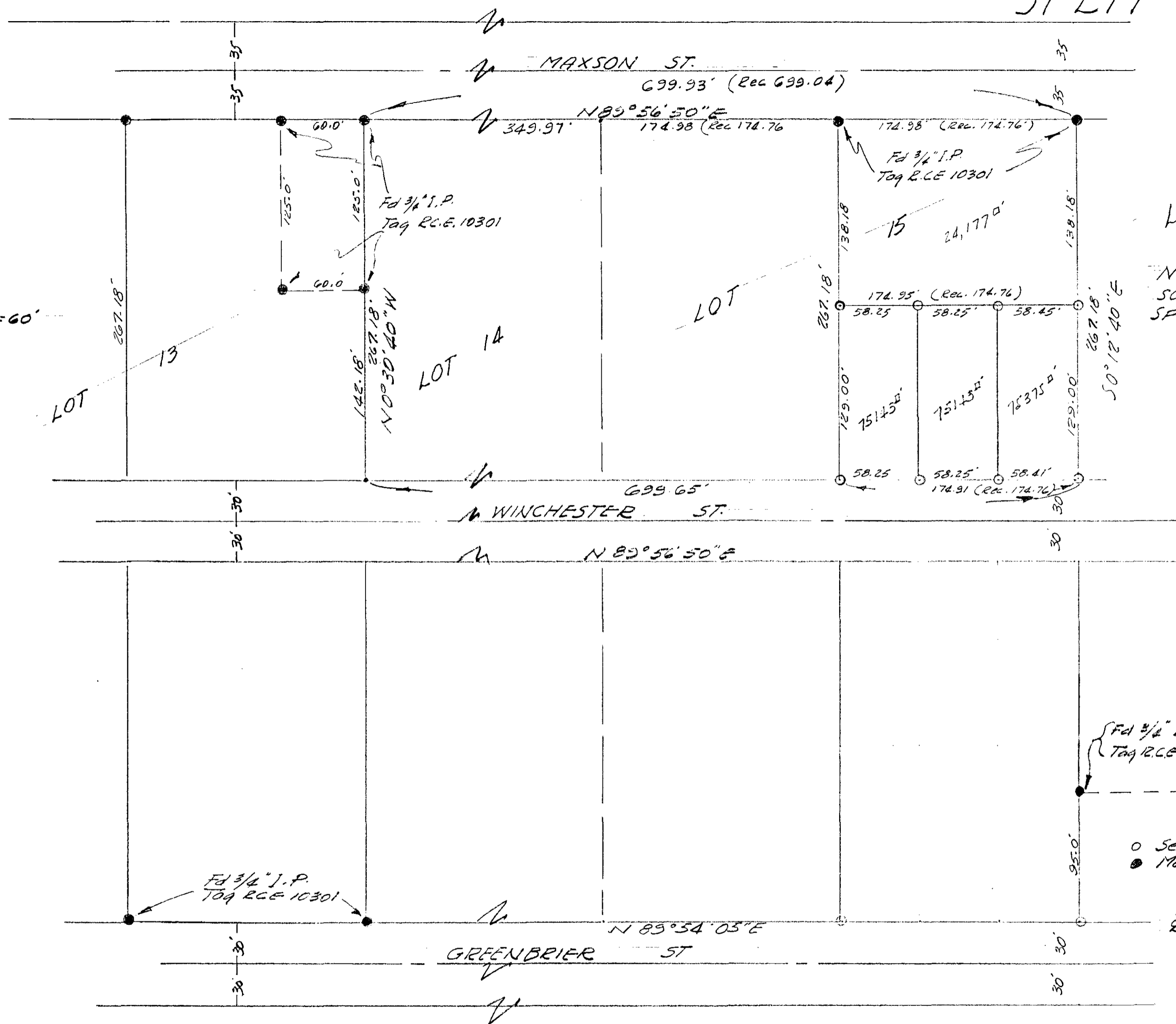


# SPLIT LOT MAP 307



SCALE 1"=60'



LOT 16

NOTE: THIS IS A NEW SURVEY OF PROPERTY SPLIT BY MAP NO 118

LEGEND  
 ○ Set 3/4" Iron Pipe Tag R.C.E. 10301  
 ● Monuments Found

BASIS OF BEARINGS is the E of Maxson St, i.e. N 89° 56' 50" E

APPROVED BY THE PLANNING COMMISSION  
 this 5<sup>th</sup> day of Mar. 1962  
 Resolution No. 62-P-13

Secretary *Phyllis Taylor*

CITY OF OCEANSIDE	
SURVEY OF A PORTION OF LOT 15 MAXSON & GRIFFIN'S	
MAP 433	
REQUESTED BY F.W. HERON	
SOUTH COAST ENGINEERING SERVICE	
Approved: <i>Olton &amp; Ruden</i> Attors. L. Ruden	<i>M. A. Ayer</i> W. A. AYER R.C.E. 10301
6-19-62 DATE	June 18, 1962 DATE