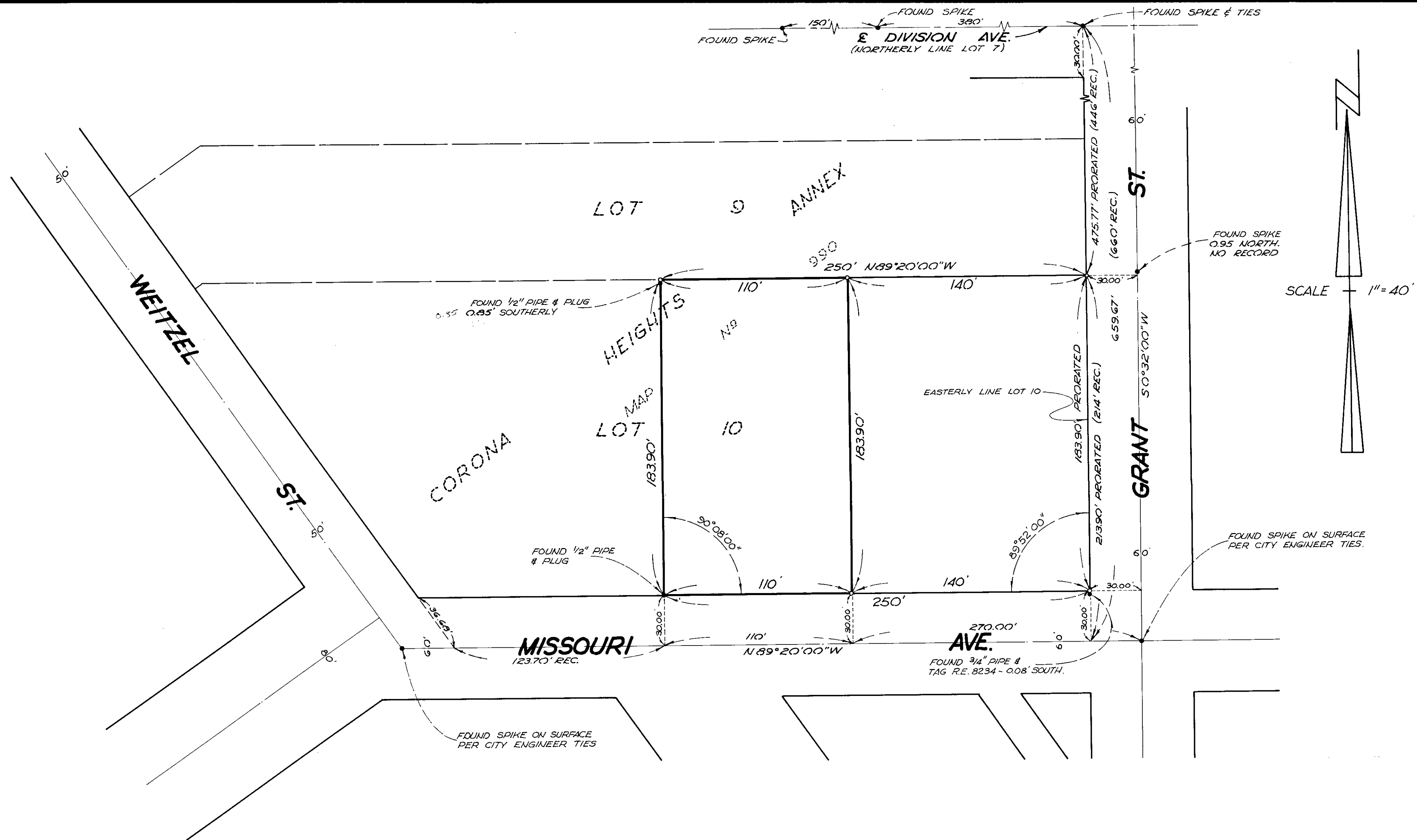


# SPLIT LOT MAP NO 304



- LEGEND-**
- INDICATES SET 3/4" IRON PIPE STAMPED R.C.E. 6486
  - INDICATES MONUMENT FOUND AS SHOWN.

APPROVED

Date: 6-7-62

By: *Riton Reiken*  
City Engineer

ROY L. KLEMA, ENGINEERS INC.  
ESCONDIDO, CALIFORNIA

*Roy L. Klema*  
ROY L. KLEMA R.C.E. 6486

FB-10 5-13-62 JN 6221

**LOT SPLIT**  
OF  
**PORTION LOT 10**  
**CORONA HEIGHTS ANNEX**  
CITY OF OCEANSIDE  
CALIFORNIA

REQUESTED BY: MEYERS CONST. CO.  
431 HALE AVE., ESCONDIDO, CALIF.

DWG NO B-III